

# CHICKEN POX

---



# GENERAL

---

- ❑ CAUSED BY VARICELLA-ZOSTER VIRUS
  - ❑ WORLD WIDE DISTRIBUTION
  - ❑ AN ACUTE HIGHLY INFECTIOUS DISEASE
-

# EPIDEMIOLOGICAL DETERMINANTS

---

## 1.AGENT

- . HUMAN HERPES VIRUS-3
  - . CHICKENPOX OCCURS AS A  
PRIMARY INFECTION
  - .REACTIVATION OF VIRUS RESULTS  
INTO ZOSTER
-

# SOURCE OF INFECTION

---

- ❑ USUAL SOURCE-FROM A CASE OF CHICKENPOX
  - ❑ RARELY-FROM A PATIENT OF HERPES ZOSTER
-

# INFECTIVITY

---

- ❑ 1 TO 2 DAYS BEFORE THE APPEARANCE OF RASHE TO 5 DAYS THEREAFTER
  - ❑ VIRUS DIES OUT BEFORE THE PUSTULAR STAGE
-

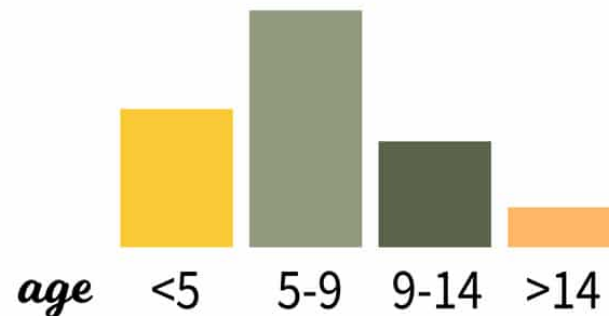
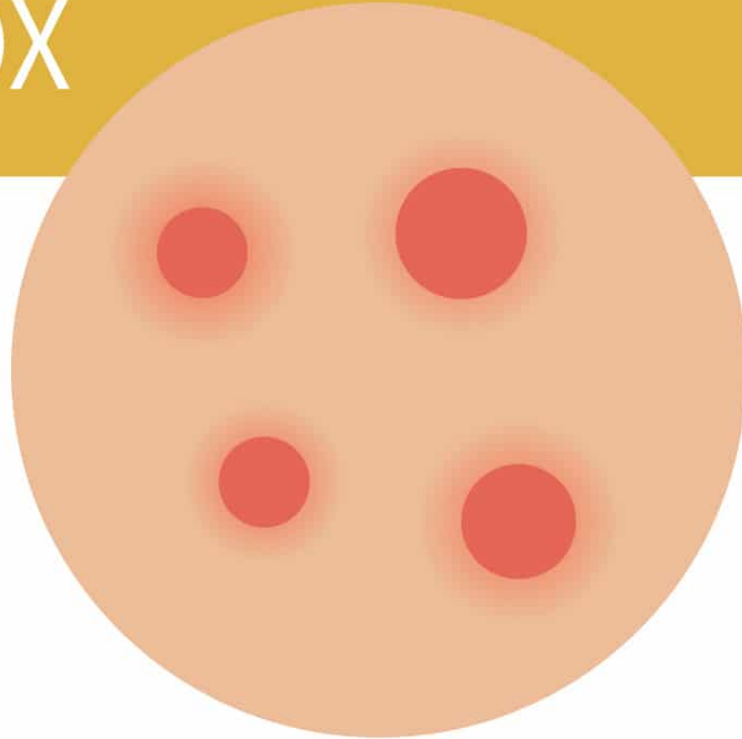
# SECONDARY ATTACK RATES

---

- HIGHLY COMMUNICABLE
  - SECONDARY ATTACK RATE IN HOUSEHOLD CONTACTS IS NEARLY 90%
-

# HOST FACTOR - Age

## CHICKENPOX



# HOST FACTOR

---

- ❑ IMMUNITY-ONE ATTACK GIVES DURABLE IMMUNITY
  - ❑ PREGNANCY-INFECTION DURING PREGNANCY CAN CAUSE SEVERE COMPLICATIONS
-



# TRANSMISSION

---

- ❑ FROM PERSON TO PERSON BY DROPLET / DROPLET NUCLEI
  - ❑ FLUID FROM THE VESICLES
  - ❑ ROUTE OF ENTRY-RESPIRATORY TRACT
  - ❑ VIRUS CAN CROSS PLACENTA
  - ❑ LEADING TO CONGENITAL VARICELLA
-

# INCUBATION PERIOD

---

14 TO 16 DAYS

---

# CLINICAL FEATURES

---

## 1. PRE-ERUPTIVE PHASE

- ONSET IS SUDDEN
  - MILD OR MODERATE FEVER
  - PAIN IN THE BACK
  - SHIVERING AND
  - MALAISE.
  - LASTING ABOUT 24 HOURS.
- 
- IN ADULTS- MORE SEVERE AND MAY LAST FOR 2- 3 DAYS
-

# CLINICAL FEATURES

---

## 2.ERUPTIVE PHASE-

DISTRIBUTION-SYMMETRICAL.

- FIRST ON TRUNK
- MUCOSAL INVOLVEMENT
- PALMS & SOLES SPARED

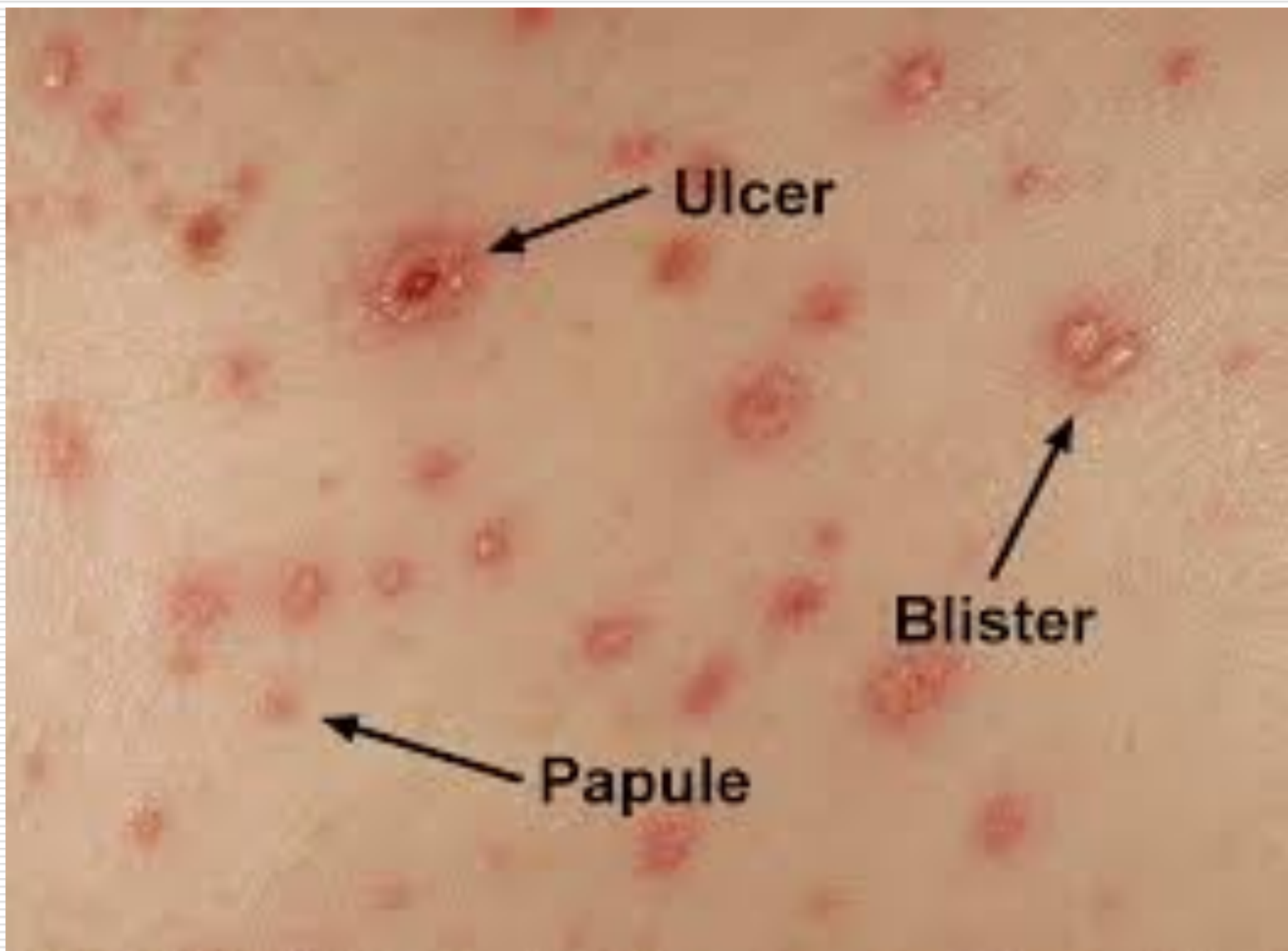
RAPID EVOLUTION- MACULE, PAPULE, VESICLE AND SCAB

- DEW DROPS ON SKIN
- SCABBING IN 4 TO 7 DAYS

PLEOMORPHISM

---

FEVER



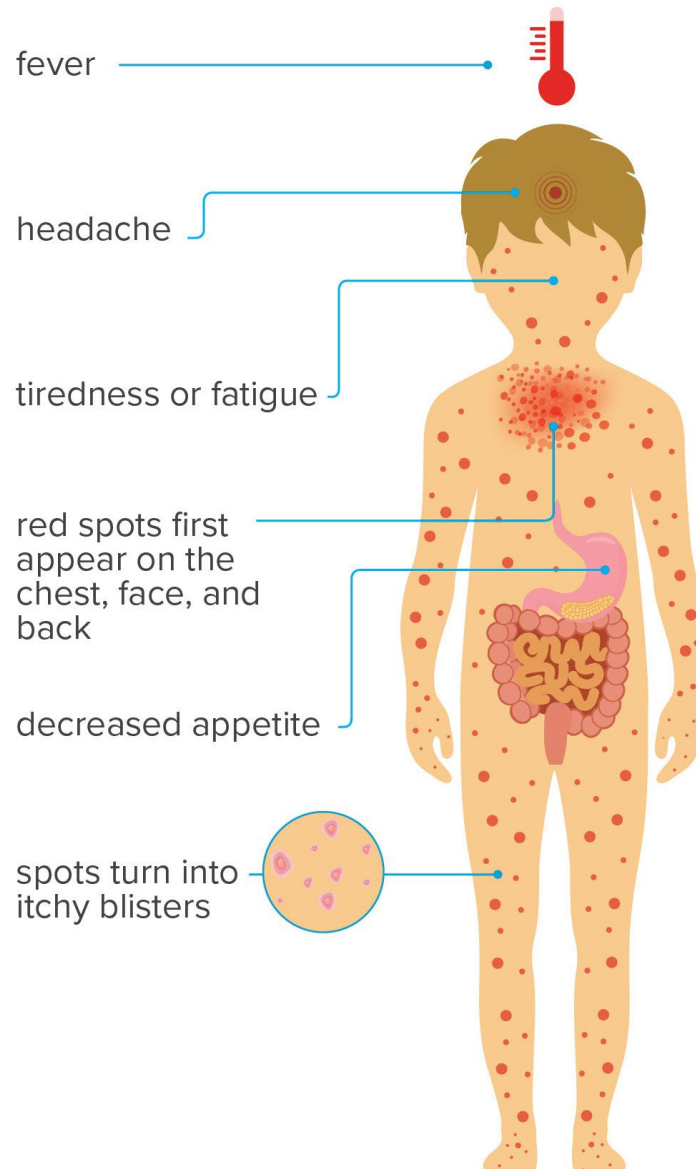
**Ulcer**

**Blister**

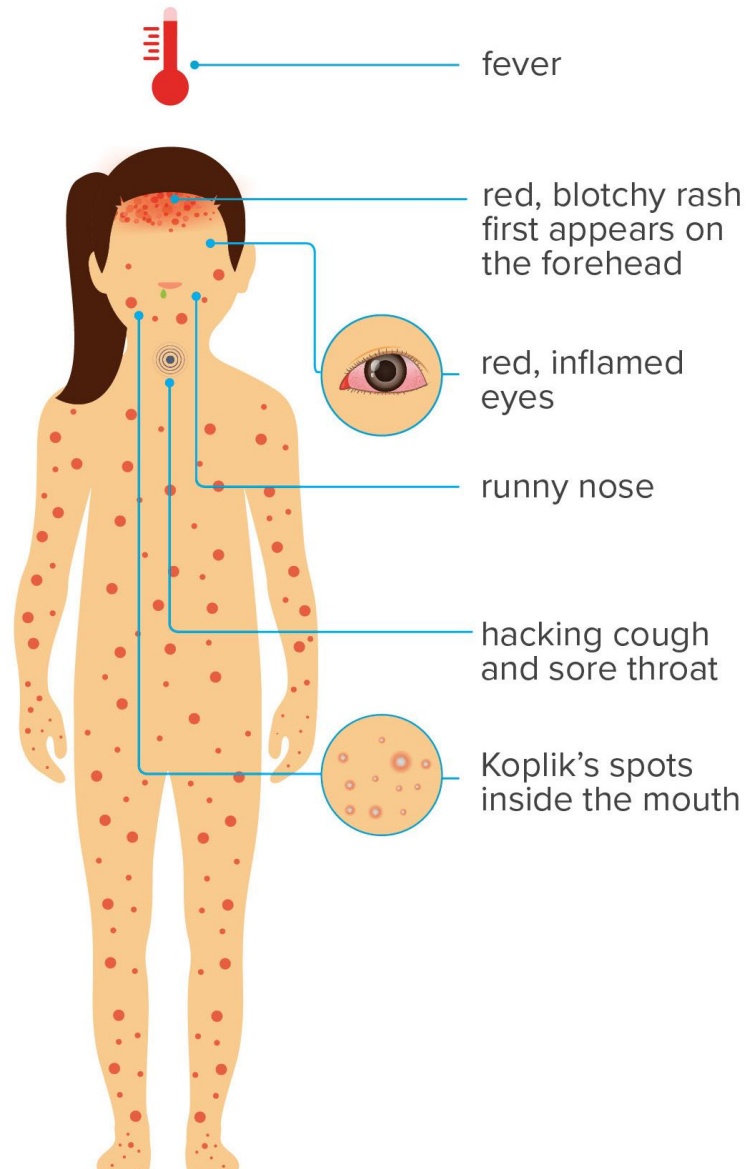
**Papule**

# Chickenpox vs. Measles

## Chickenpox



## Measles



# COMPLICATIONS

---

- ❑ MORTALITY-LESS THAN 1%
  - ❑ SEVERE COMPLICATIONS OCCUR MAINLY IN IMMUNOCOMPROMISED INDIVIDUALS
  - ❑ COMPLICATIONS
    - A. HEMMORHAGE
    - B. PNEUMONIA
    - C. ENCEPHALITIS
    - D. REYE'S SYNDROME
-

# COMPLICATIONS

---

MATERNAL VARICELLA-

FOETAL WASTAGE

MICROCEPHALY

LOW BIRTH WEIGHT

SECONDARY BACTERIAL INFECTION

---



# LAB DIAGNOSIS

---

- ❑ EXAMINATION OF VESICULAR FLUID
  - ❑ CULTIVATION OF VIRUS
  - ❑ SCRAPPING FROM FLOOR OF VESICLES SHOW MULTI-NUCLEATED GIANT CELLS
  - ❑ SEROLOGY-EPIDEMIOLOGICAL SURVEY
-

# CONTROL

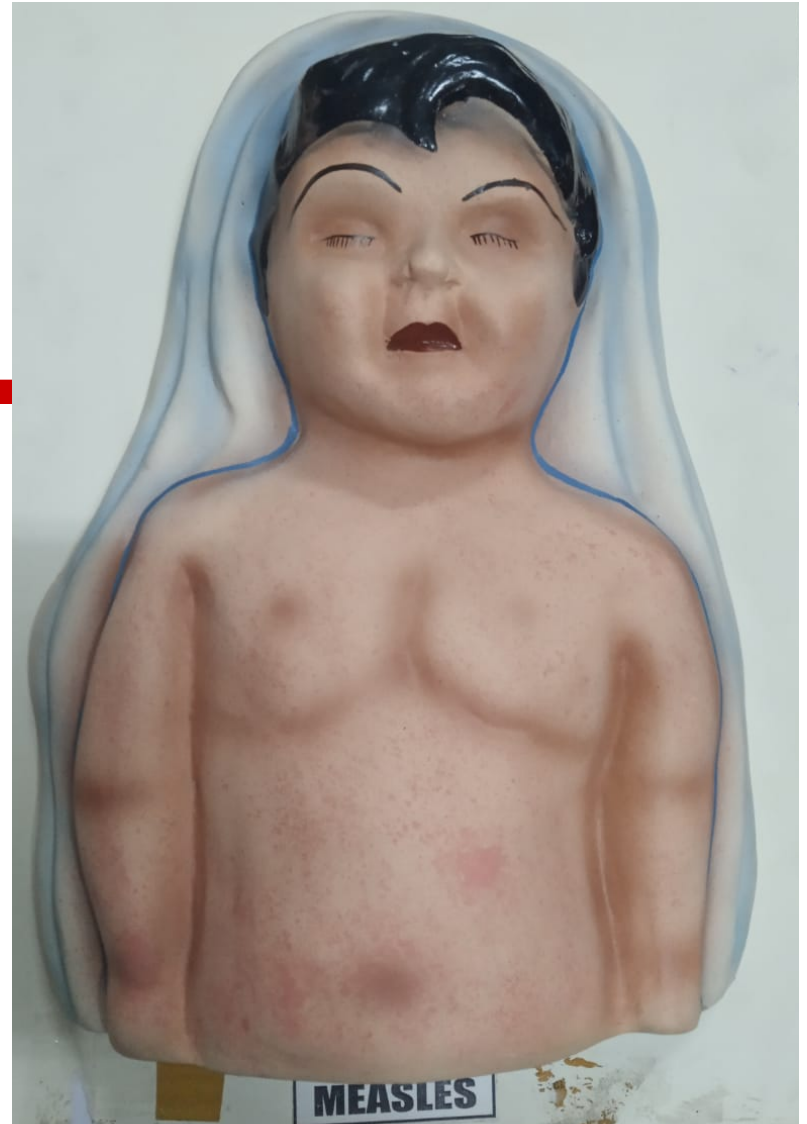
---


- ❑ NOTIFICATION
  - ❑ ISOLATION OF CASES
  - ❑ DISINFECTION OF ARTICLES SOILED BY NOSE & THROAT DISCHARGE
-


# PREVENTION


---

- ❑ VARICELLA ZOSTER IMMUNOGLOBULIN  
-WITHIN 72 HOURS OF EXPOSURE
  - ❑ VACCINE-  
  
LIVE ATTENUATED VACCINE  
(UNDER TRIAL)
-



 = not immunized but still healthy

 = immunized and healthy

 = not immunized, sick, and contagious

