

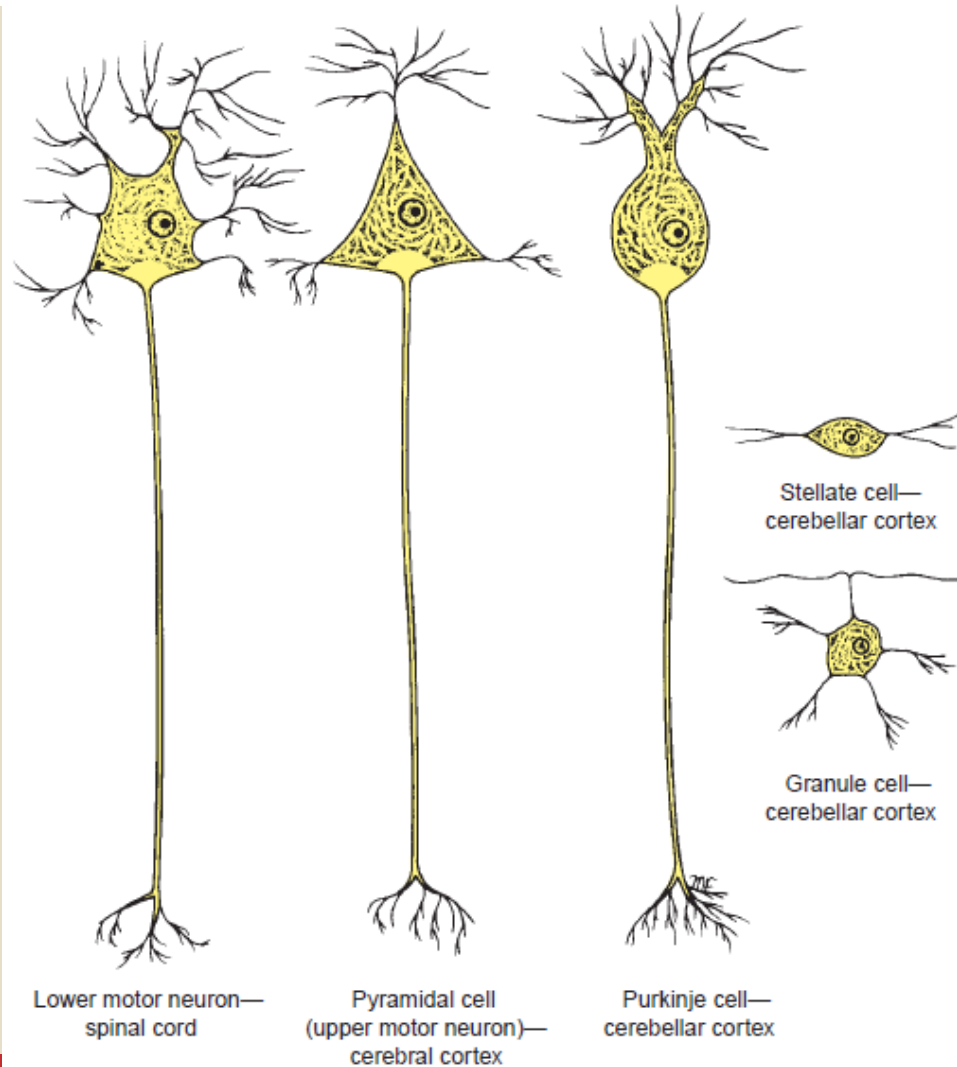


Central nervous system

David Ebenezer A
Assistant Professor
Dept of Anatomy
VMCH&RI



Multipolar neuron types



Spinal cord- thoracic region

Posterior median
sulcus

Posterior
White
column

Posterior
Grey horn

Central canal
In grey commissure

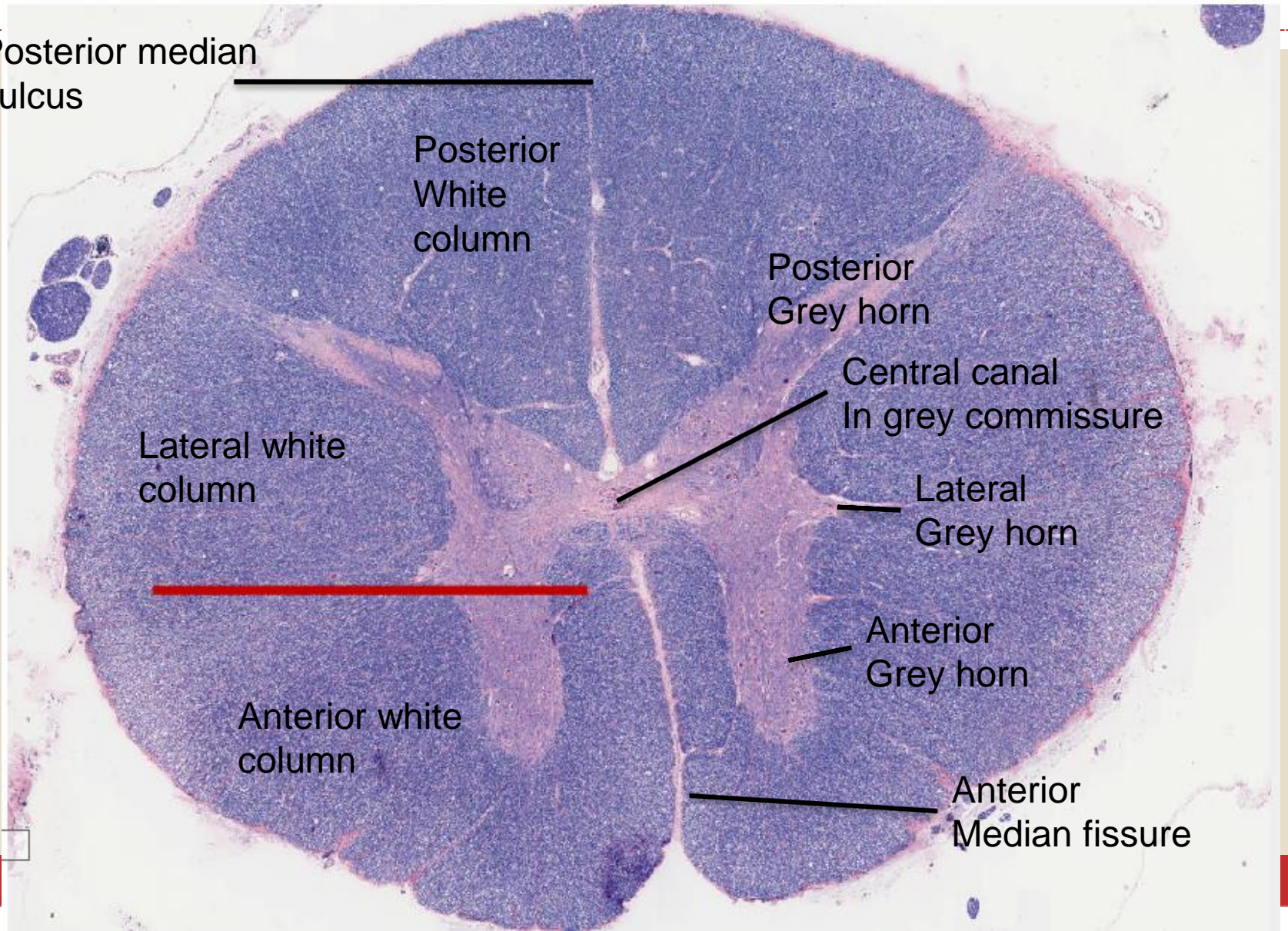
Lateral white
column

Lateral
Grey horn

Anterior
Grey horn

Anterior white
column

Anterior
Median fissure

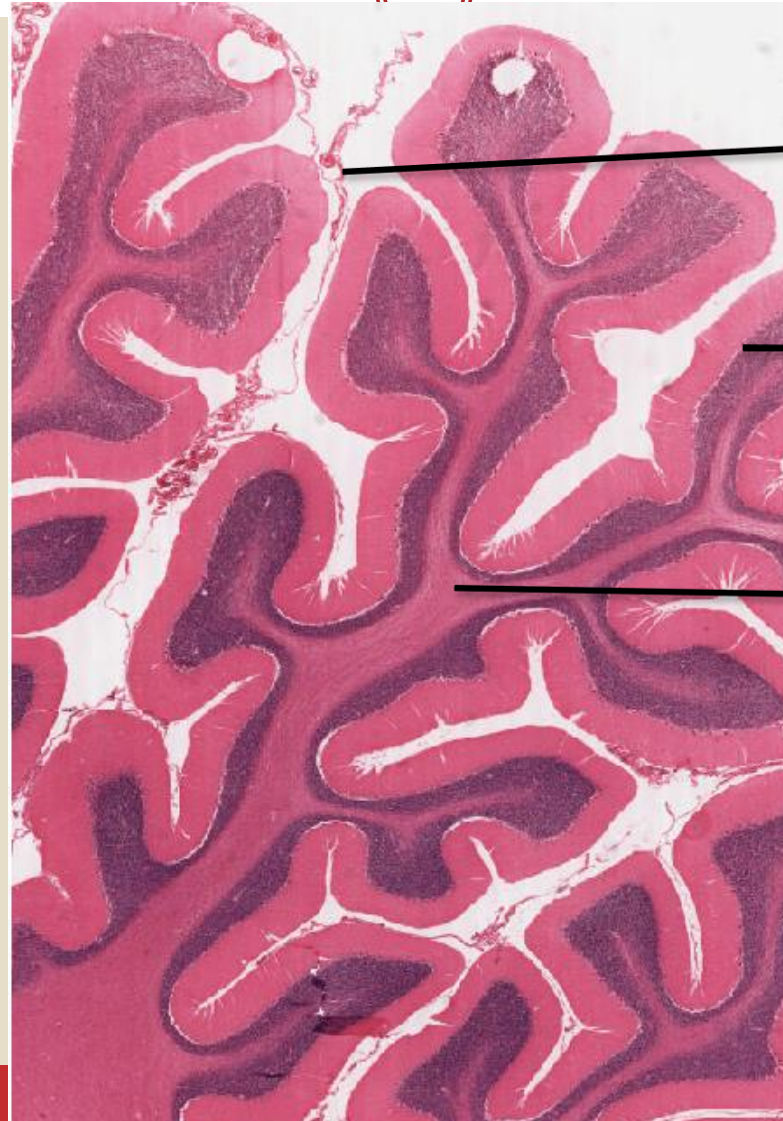


Cerebellum- cell types



- Molecular layer
 - Basket cells & stellate cells. Few & widely spaced
- Purkinje cell layer
 - Single row. Flask shaped.
- Granular layer
 - Granule cells & Golgi cells

Cerebellum



Pia mater

Grey matter

White matter

Cerebrum- cell types



- Pyramidal cell- apex towards surface. Axon arises from base, dendrites from apex & basal angles
- Stellate/granule cells- small cells. star shaped bodies with short axons & many dendrites
- Fusiform cells- long axis vertical to surface. Deep layers of cortex
- Horizontal cells of Cajal- fusiform. Horizontal to surface. Superficial layers of cortex
- Cells of Martinotti- small multipolar. Present throughout the cortex

Neuronal connections

