



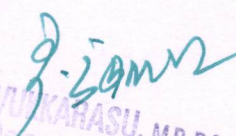
VELAMMAL MEDICAL COLLEGE
HOSPITAL AND RESEARCH INSTITUTE
MADURAI - 625009

6.2.1

Organizational Structure of VMCH & RI

Index

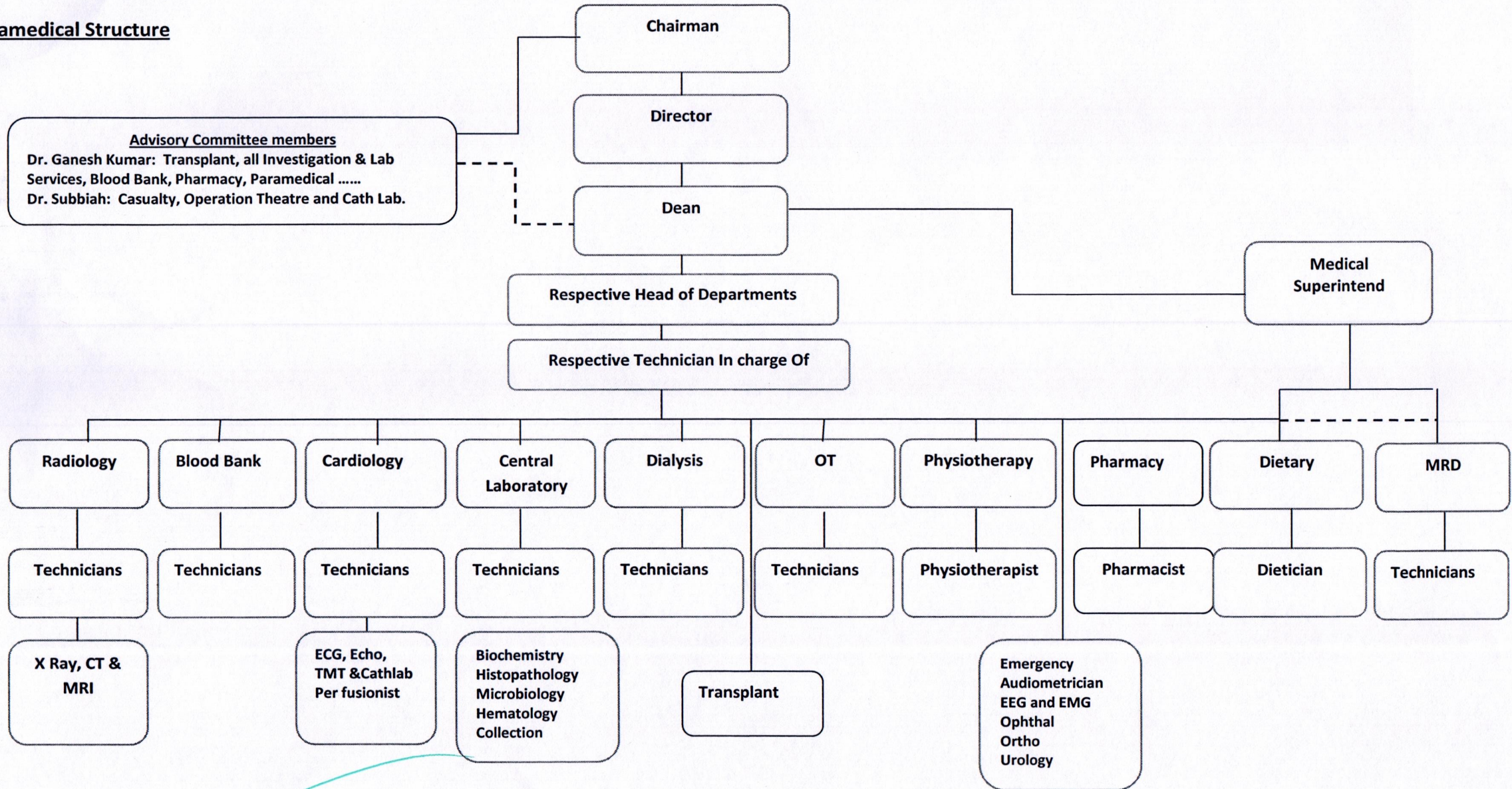
Sl. No.	Particulars	Page. No.
1.	Paramedical Structure	2
2.	Accounts and Auditing	3
3.	Marketing – Department	4
4.	Operation & Patient care Structure	5
5.	Medical Service	6
6.	Nursing Structure	7
7.	Engineering & Maintenance	8
8.	Admin and Support	9
9.	Advisory Committee Members	10


Prof. T. THIRUNAVUKARASU, M.D., D.A.,
Dean
Velammal Medical College Hospital
and Research Institute
"Velammal Medical College"
Madurai-Tulicorin Bypass Road
Anuppanadi, Madurai-625 009, T.N.



ORGANIZATION STRUCTURE – VELAMMAL MEDICAL COLLEGE HOSPITAL

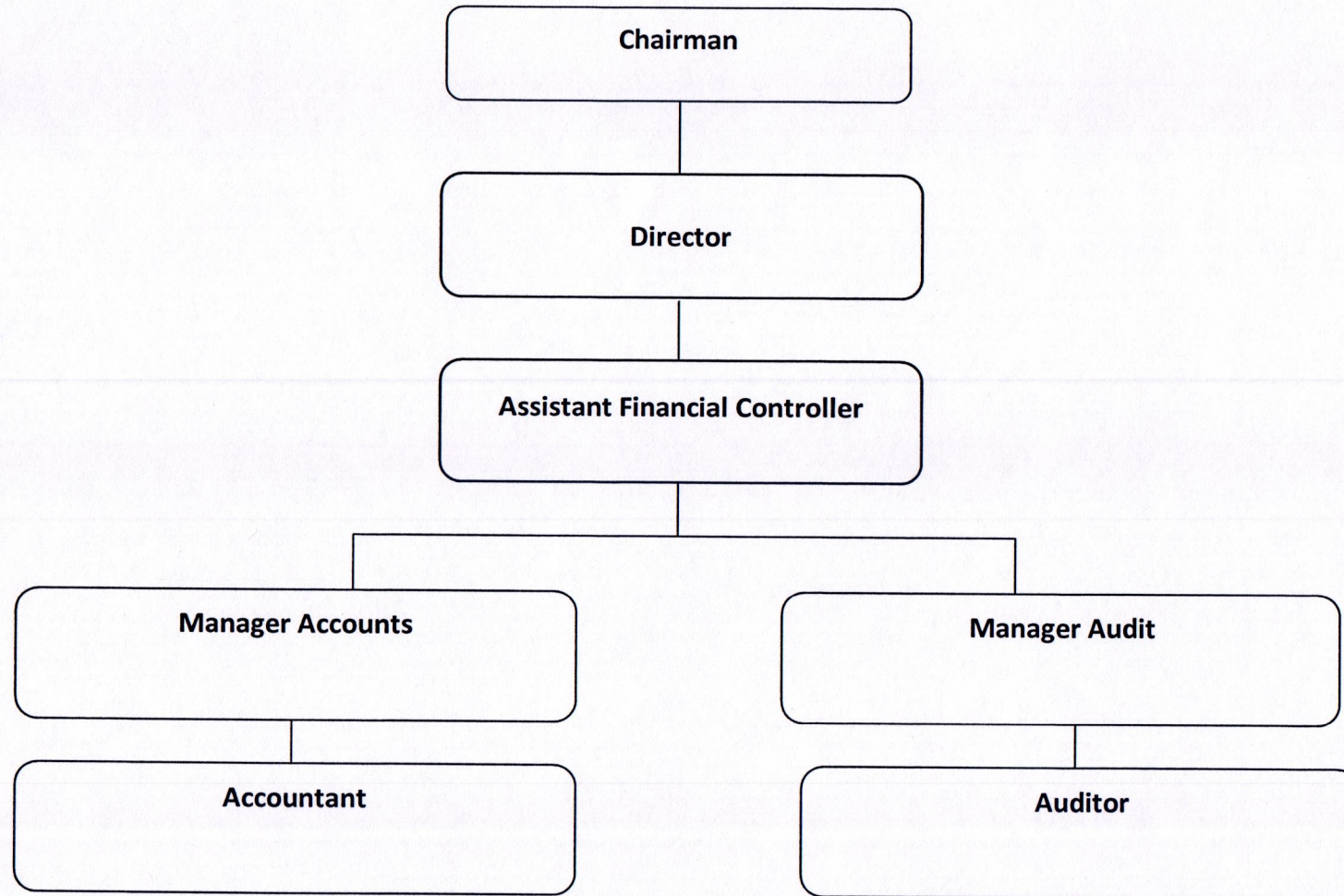
Paramedical Structure



Approved by Chairman



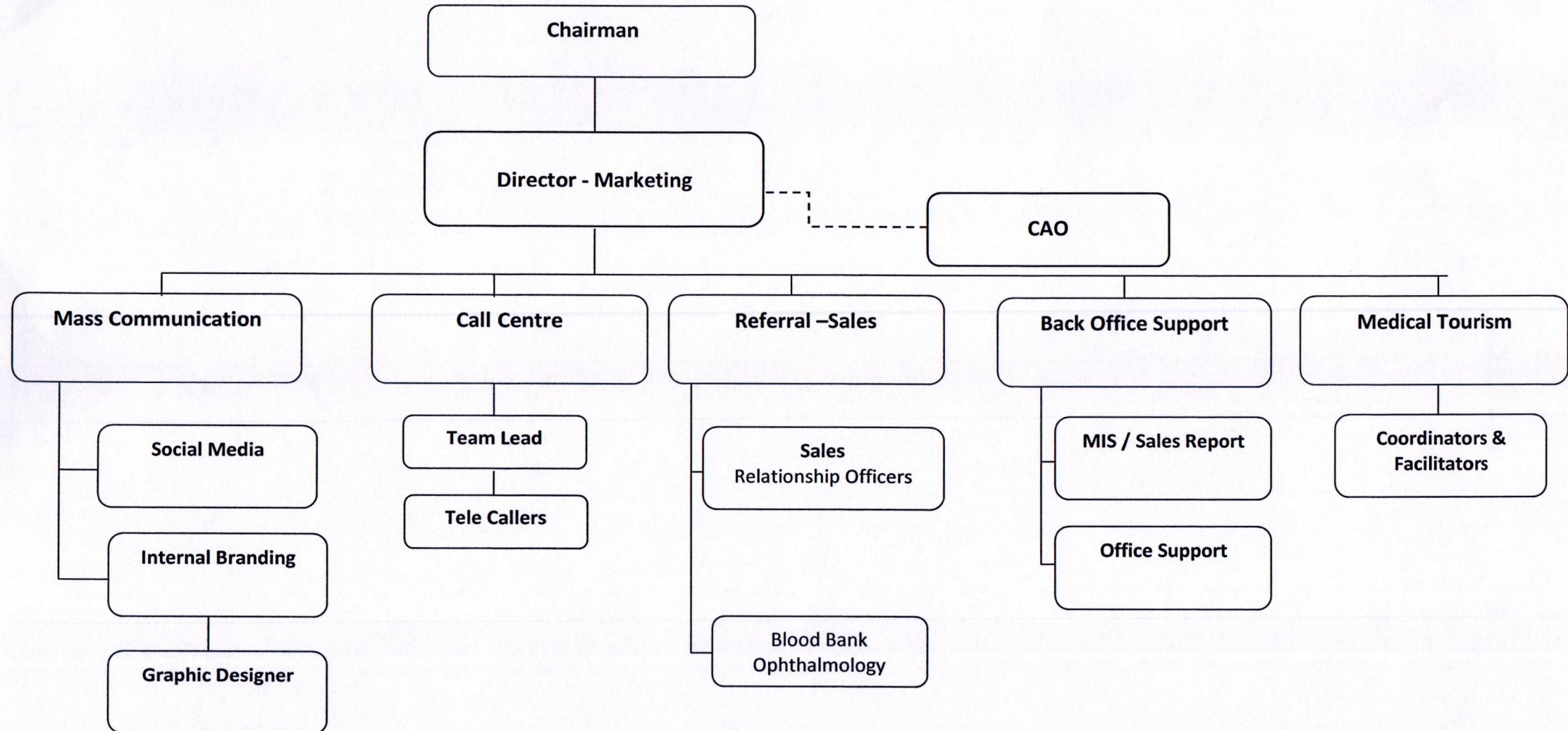
Accounts and Auditing



Approved by Chairman



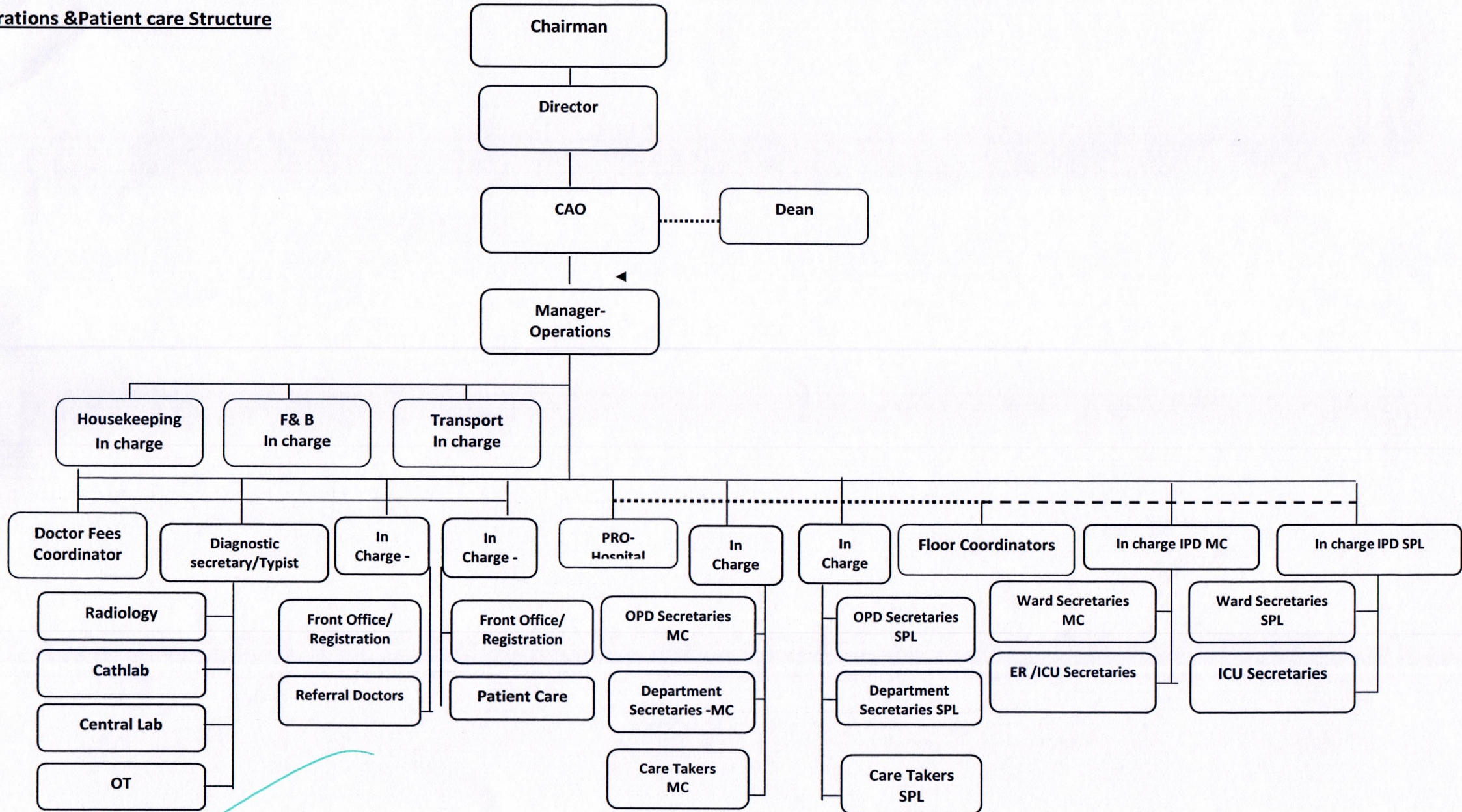
Marketing - Department





ORGANIZATION STRUCTURE – VELAMMAL MEDICAL COLLEGE HOSPITAL

Operations & Patient care Structure

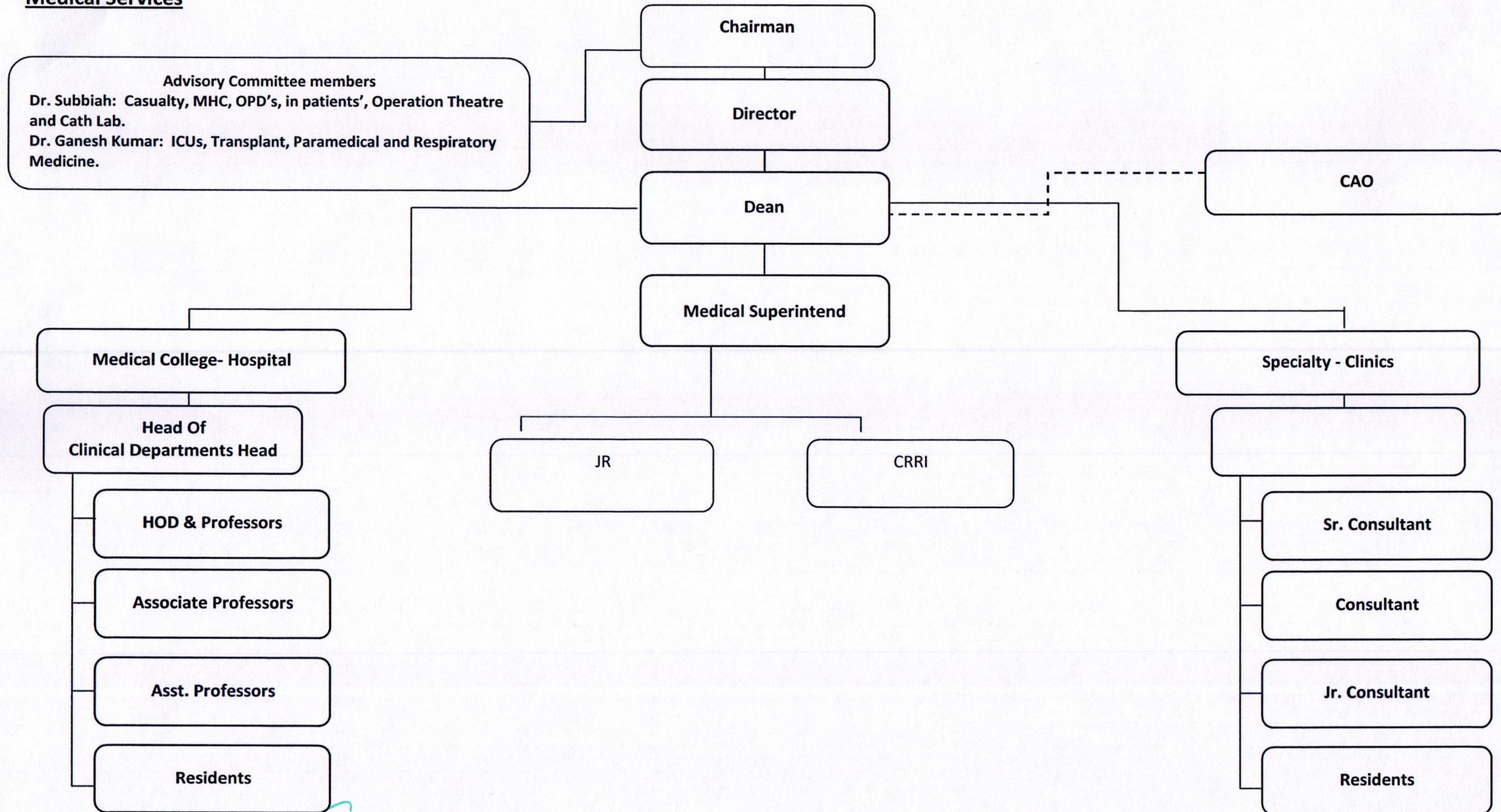


Approved by Chairman



ORGANIZATION STRUCTURE – VELAMMAL MEDICAL COLLEGE HOSPITAL

Medical Services

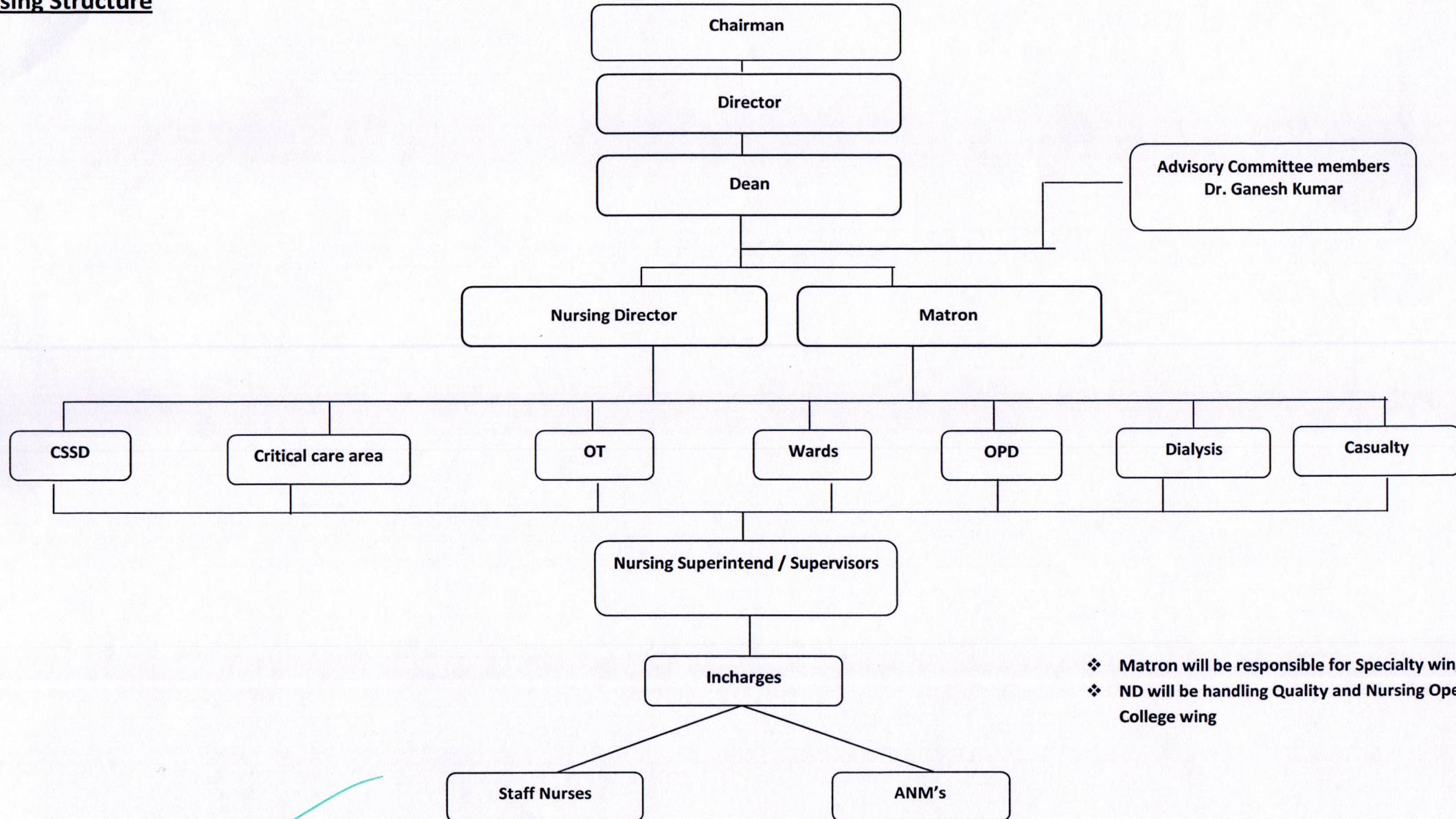


Approved by Chairman



ORGANIZATION STRUCTURE – VELAMMAL MEDICAL COLLEGE HOSPITAL

Nursing Structure



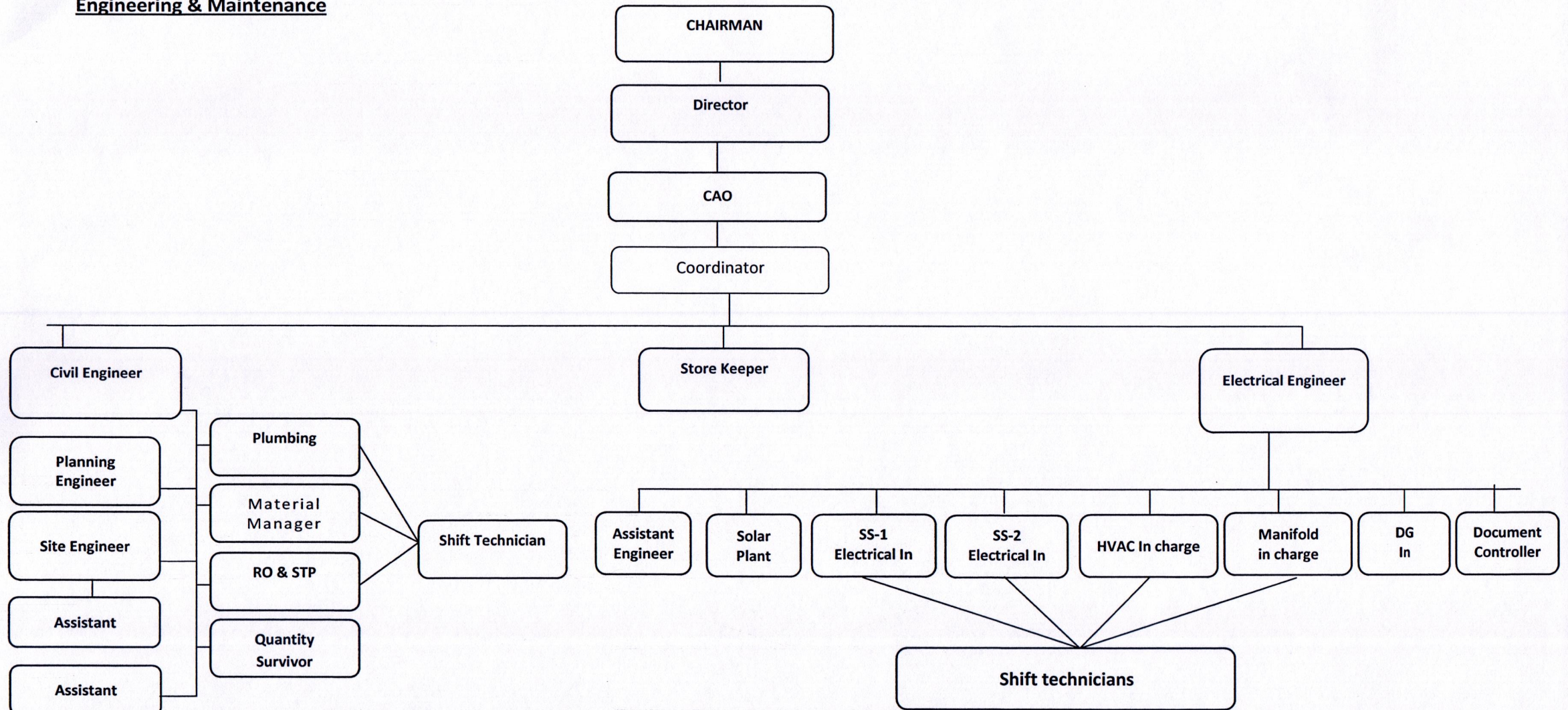
- ❖ Matron will be responsible for Specialty wing nursing Operations
- ❖ ND will be handling Quality and Nursing Operations of Medical College wing

Approved by Chairman



ORGANIZATION STRUCTURE – VELAMMAL MEDICAL COLLEGE HOSPITAL

Engineering & Maintenance

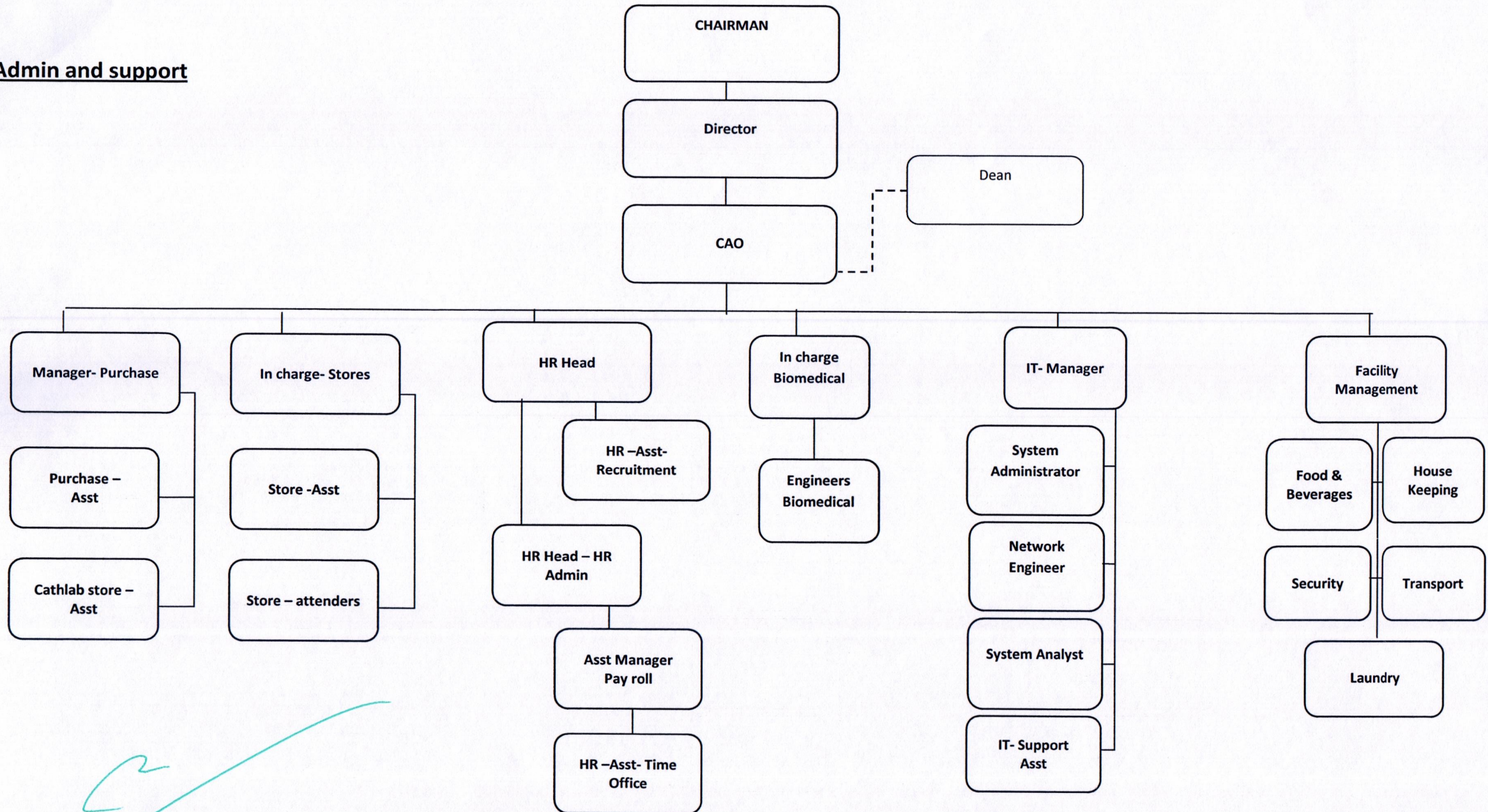


Approved by Chairman



ORGANIZATION STRUCTURE – VELAMMAL MEDICAL COLLEGE HOSPITAL

Admin and support



Approved by Chairman



ORGANOGRAM- VELAMMAL MEDICAL COLLEGE HOSPITAL

Advisory Committee members

Dr. Subbiah: Casualty, MHC, OPD's, in patients', Operation Theatre and Cath Lab.

Dr. Ganesh Kumar: ICUs, Transplant, all Investigation & Lab Services, Blood Bank, Pharmacy, Nursing, Paramedical and Respiratory Medicine.

Er.Mr.VijayAnand: Public Relations

Mr. Manivannan, Chief Administrative Officer: General administration, Billing, Insurance, Purchase and other Support functions

