



# VELAMMAL MEDICAL COLLEGE HOSPITAL AND RESEARCH INSTITUTE MADURAI - 625009

## Criteria 1.4.1

### Stakeholders Feedback Analysis Report

#### Index

S.No	Particulars	Page No.
1	Summary	1
2	Student – Feedback Analysis	2
3	Faculty - Feedback Analysis	13
4	Alumni - Feedback Analysis	21
5	Employer - Feedback Analysis	32
6	Professionals - Feedback Analysis	42

#### Summary

Feedback is crucial to the overall development and continuing improvements of any educational institution. To track and assess the institutions performance quality with regard to curriculum and curriculum – related concerns, the institutions Feedback analysis committee designs questionnaires and solicits feedback from its stakeholders. Every year feedback is collected from all stakeholders on curriculum, analysis is done and action is taken on the recommendations. Following is the feedback analysis report for the Academic year 2023-2024 from students, teachers, Employers, Alumni, and Professionals.

#### Question types Asked to stakeholders

**Students** - Regarding the delivery of the curriculum, the methods of teaching and learning, the examination system, the fairness of the internal marking system, the availability of libraries, and skill- based training.

**Teachers** - Regarding the suitability of the course and its objectives, FDPs, workshops, help given by the institution for activities focused on conducting research, and ICT support for curriculum delivery.

**Alumni** - Concerning the areas where industry and curriculum diverge, any additional courses that students might be able to take to fulfil industry requirements, standard college procedures, alumni to mentor Student projects, assistance for extracurricular activities, a problem-solving approach, techniques for self- directed learning, etc.

**Employers** - Relating to the effectiveness of the alumni employed by their organization, the employee's skill set, flexibility, and adaptability, employer involvement in the activities of the institution related to curriculum participation in meeting, industrial visits, industrial internship etc.

**Professionals** - Overall infrastructure of the institution, hospitality rendered by institute during the stay of professionals, students' behavior, adequacy of syllabus in bridging the gap





# **VELAMMAL MEDICAL COLLEGE**

## **HOSPITAL AND RESEARCH INSTITUTE**

### **MADURAI - 625009**

between theory and practical, quality of technical and other staff, fairness in conduct of examination etc.

### **Feedback Analysis**

### **Student Feedback**

Students Questionnaire contains following questions

1. Does the institution follow the university academic calendar meticulously?
2. How would you rate the Orientation of learning outcomes with attainment
3. Does the institution conduct Add-On/Certification courses every year?
4. Does the institution conduct Enrichment/Value Added courses every year?
5. Does the Institute practice the latest in Teaching and learning methodologies?
6. Does the institute teach subjects sequentially?
7. Does the institute provide study materials details of the course?
8. Are the Industry internship programs organized by this institution adequate?
9. How would you rate the Practical Knowledge gained during Internship/Field Visit/Industry Visit?
10. How would you relate the Impact of Courses learnt into Real life application?
11. Are there facilities in place for Midcourse improvement?
12. The teaching caters to experiential and Student centric learning.
13. Has the institution provided for Effective mentorship?

Prof. T. THIRUNAVUKKARASU, M.D.,D.A.,  
Dean

Velammal Medical College Hospital  
and Research Institute  
"Velammal Village"

Madurai-Tuticorin Bypass Road  
Anuppanadi, Madurai-625 009, T.N.





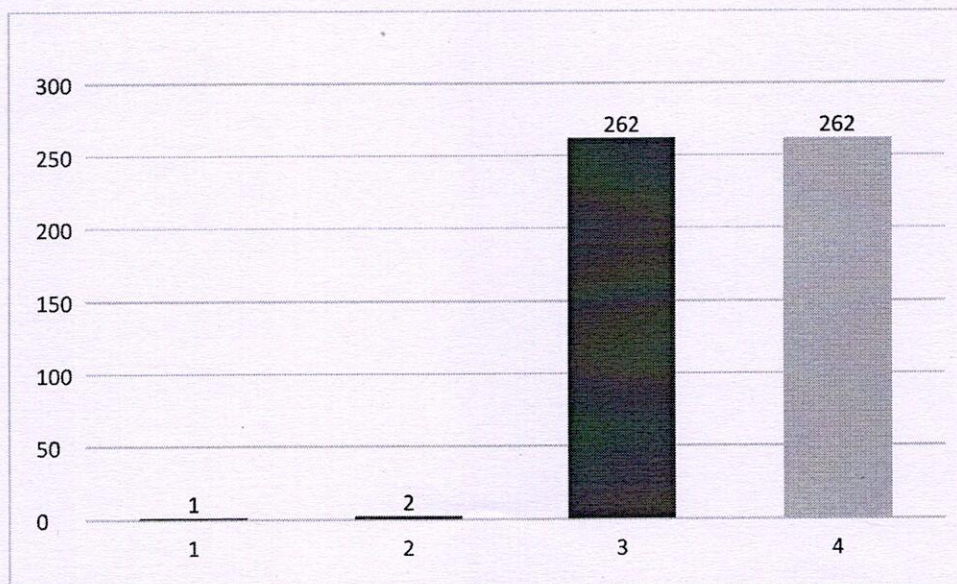
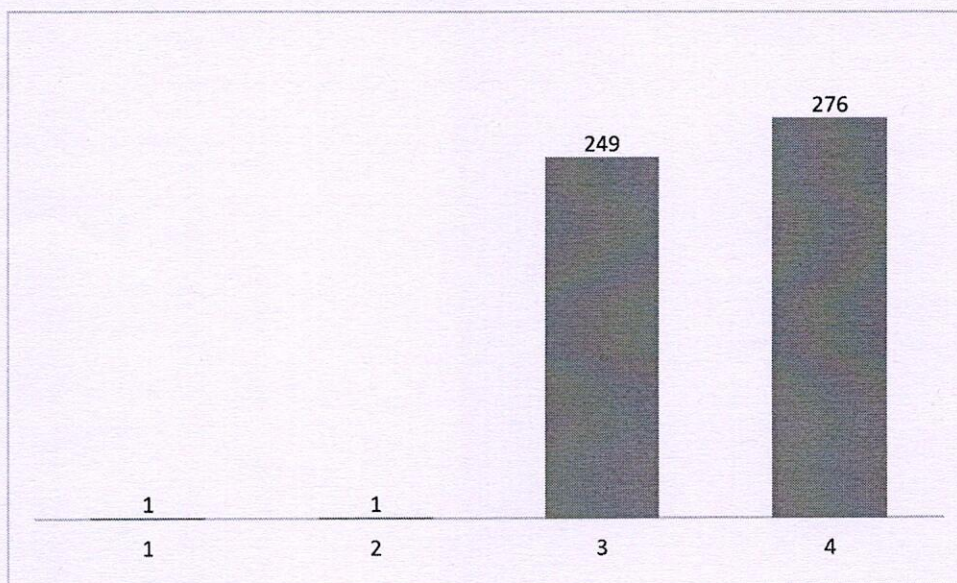
# VELAMMAL MEDICAL COLLEGE

## HOSPITAL AND RESEARCH INSTITUTE

### MADURAI - 625009

The feedback Committee has collected responses from 527 students and analysed the results. Following are the Findings of the committee.

Question – wise Analysis report is as follows.

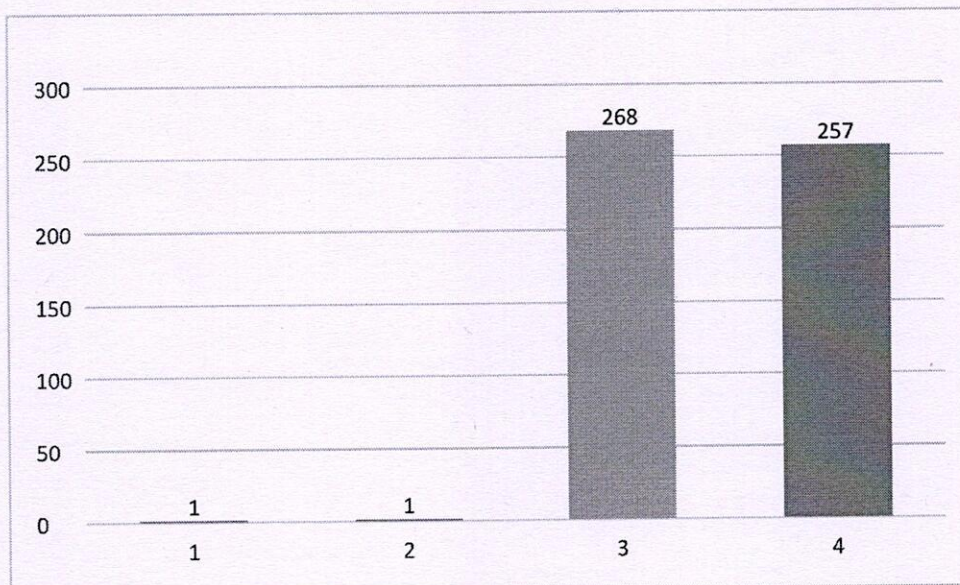
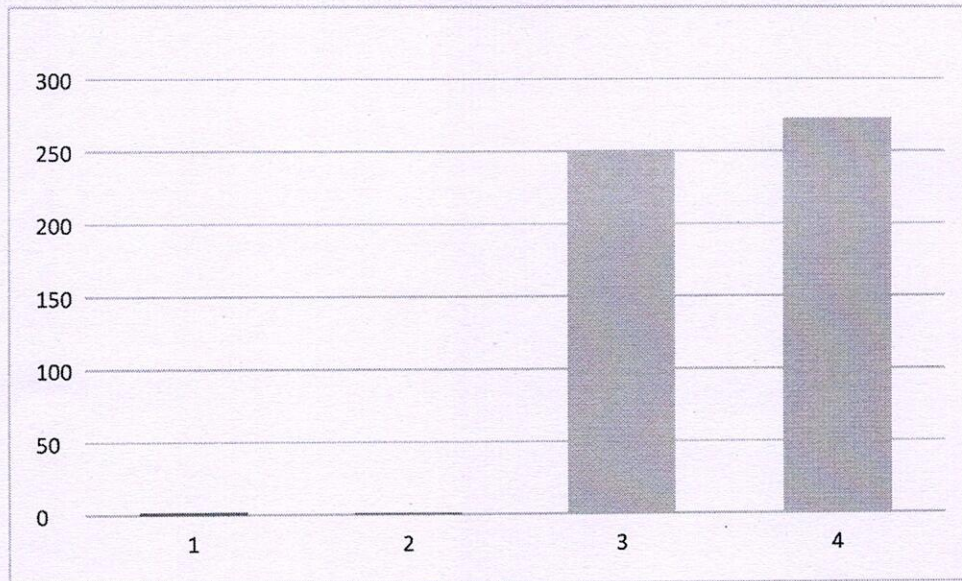


*3. 5/11/17*  
Prof. T. THIRU... KARASU, M.D., D.A.,  
Dean  
Velammal Medical College Hospital  
and Research Institute  
"Velammal Vardha"  
Madurai-Tuticorin Road  
Anuppanadi, Madurai-625 009, T.N.





**VELAMMAL MEDICAL COLLEGE**  
**HOSPITAL AND RESEARCH INSTITUTE**  
**MADURAI - 625009**



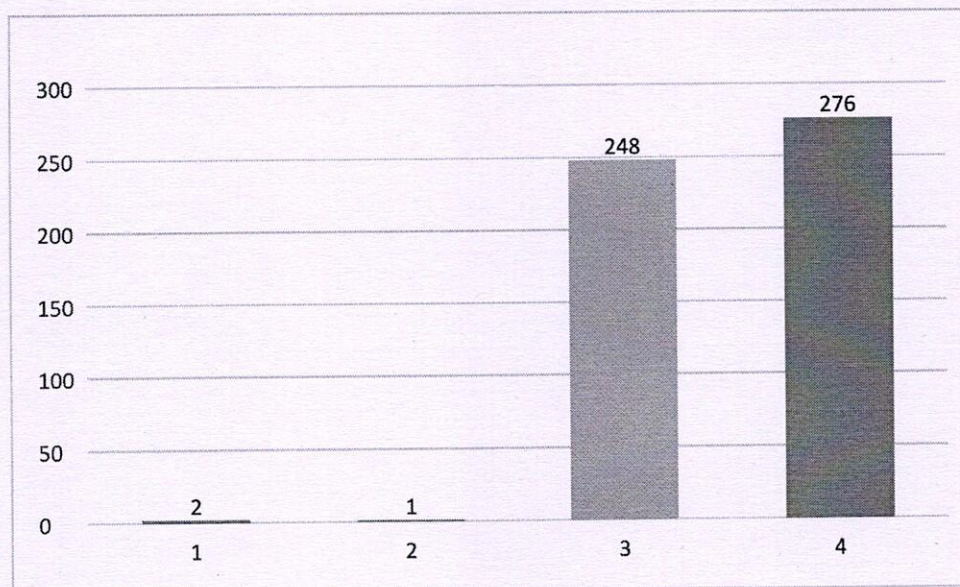
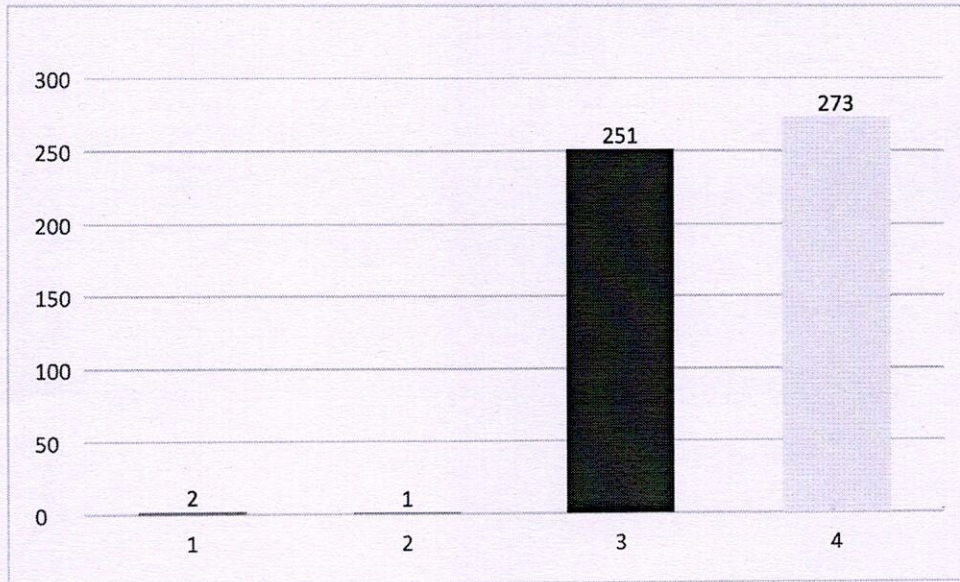
*m. s. gmm*

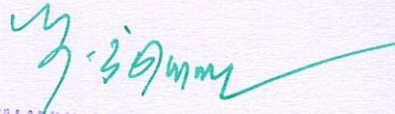
Prof. T. THIRUNAVUKKARASU, M.D., D.A.,  
Dean  
Velammal Medical College Hospital  
and Research Institute  
"Velammal Village"  
Madurai-Tuticorin Ring Road  
Anuppanadi, Madurai-625 009, T.N.





# VELAMMAL MEDICAL COLLEGE HOSPITAL AND RESEARCH INSTITUTE MADURAI - 625009

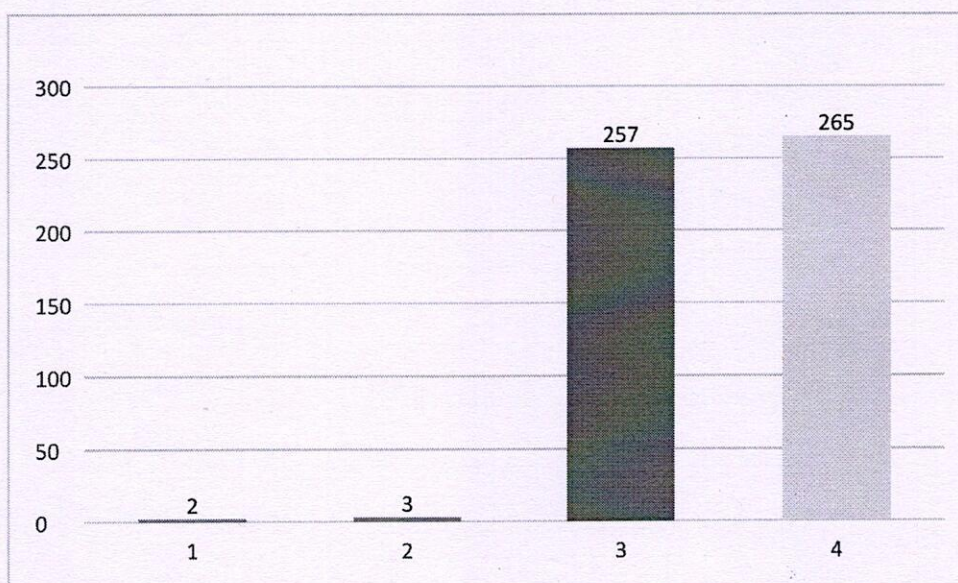
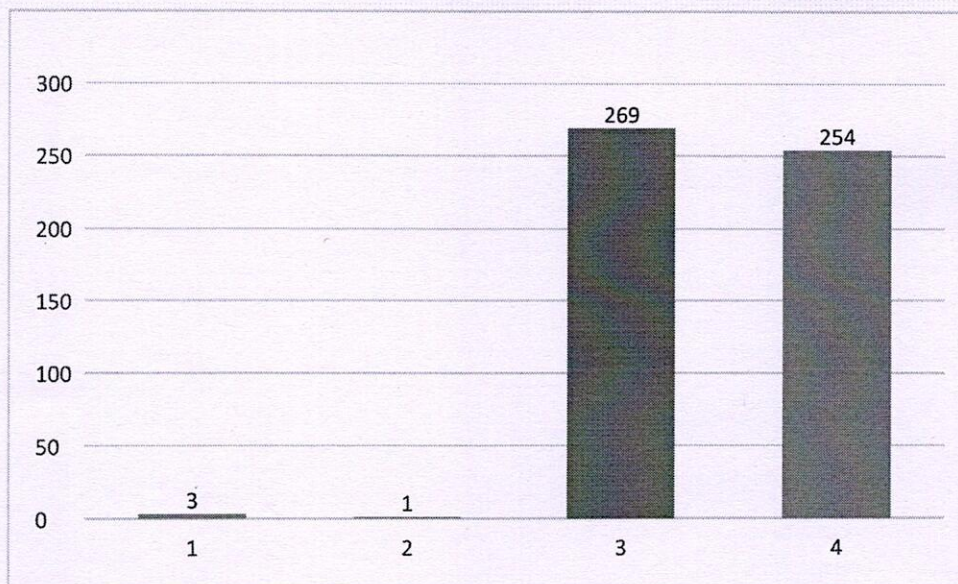


  
Prof. T. THIRUNAVUKKARASU, M.D., D.A.,  
Dean  
Velammal Medical College Hospital  
and Research Institute  
"Velammal Vilasam"  
Medurai-Tulloorin King Road  
Anuppanadi, Madurai-625 009, T.N.





# VELAMMAL MEDICAL COLLEGE HOSPITAL AND RESEARCH INSTITUTE MADURAI - 625009



Prof. T. THIRUNAVUKARASU, M.D., D.A.,  
Dean

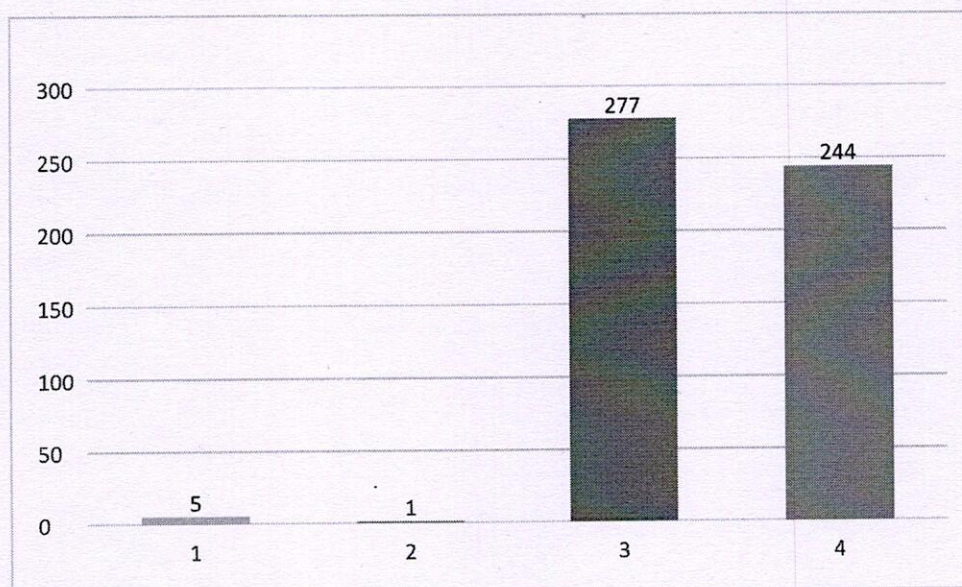
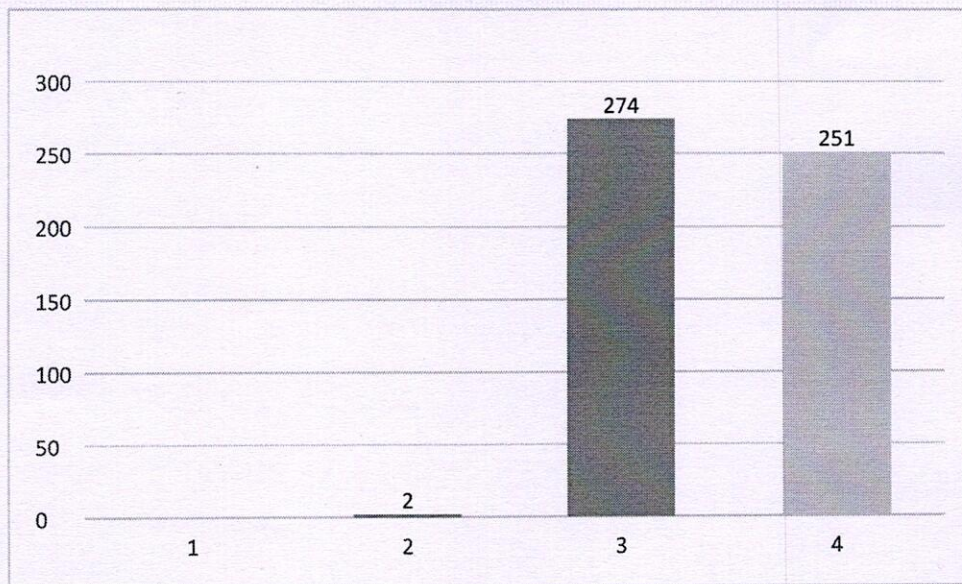
Velammal Medical College Hospital  
and Research Institute  
"Velammal Village"

Madurai-Tulicorin Bypass Road  
Anuppanadi, Madurai-625 009, T.N.





# VELAMMAL MEDICAL COLLEGE HOSPITAL AND RESEARCH INSTITUTE MADURAI - 625009

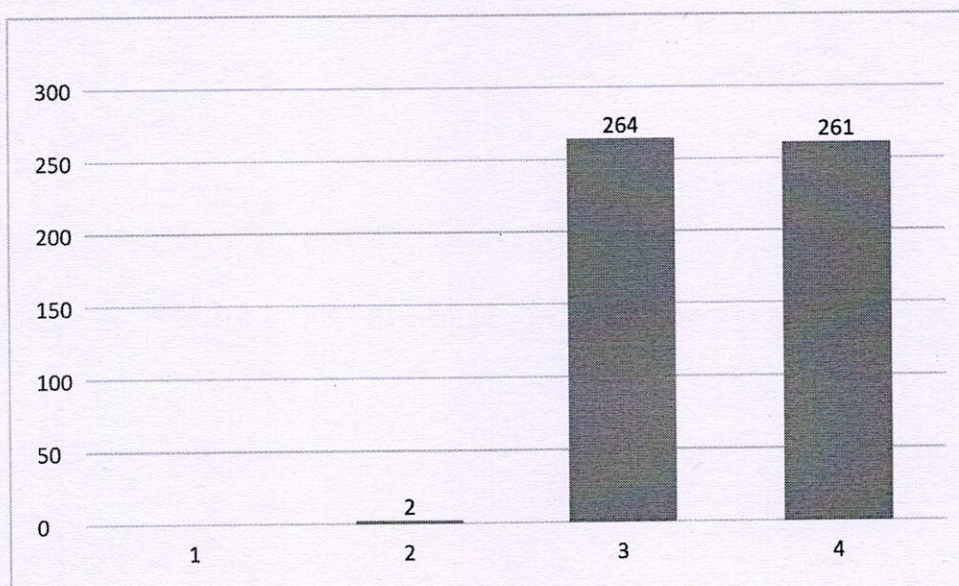
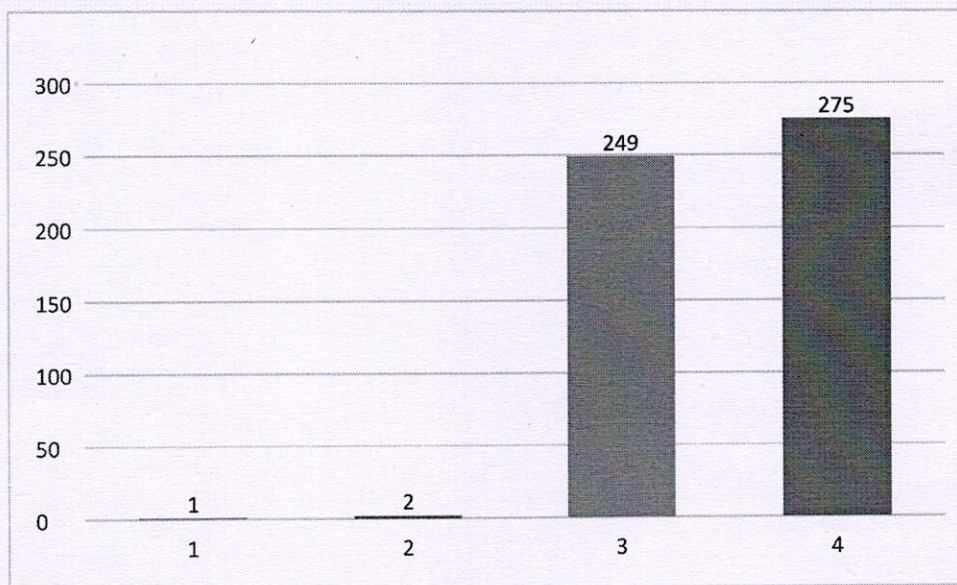


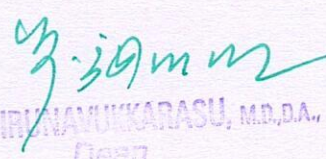
*Prof. T. Thirunavukkarasu*  
Prof. T. THIRUNAVUKKARASU, M.D., D.A.,  
Dean  
Velammal Medical College Hospital  
and Research Institute  
"Velammal Village"  
Madurai-Tuticorin Road  
Anuppanadi, Madurai-625 009, T.N.





**VELAMMAL MEDICAL COLLEGE**  
**HOSPITAL AND RESEARCH INSTITUTE**  
**MADURAI - 625009**

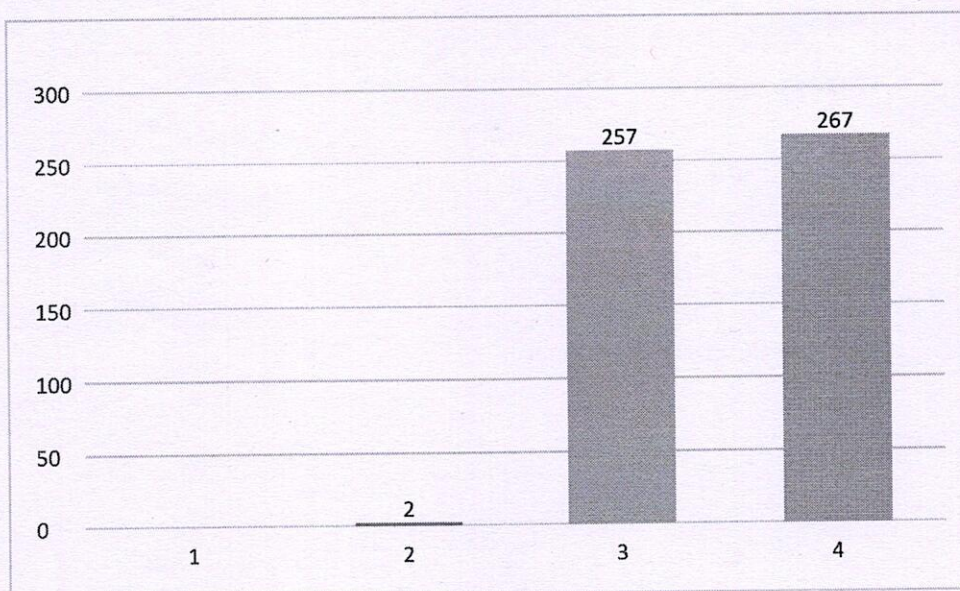
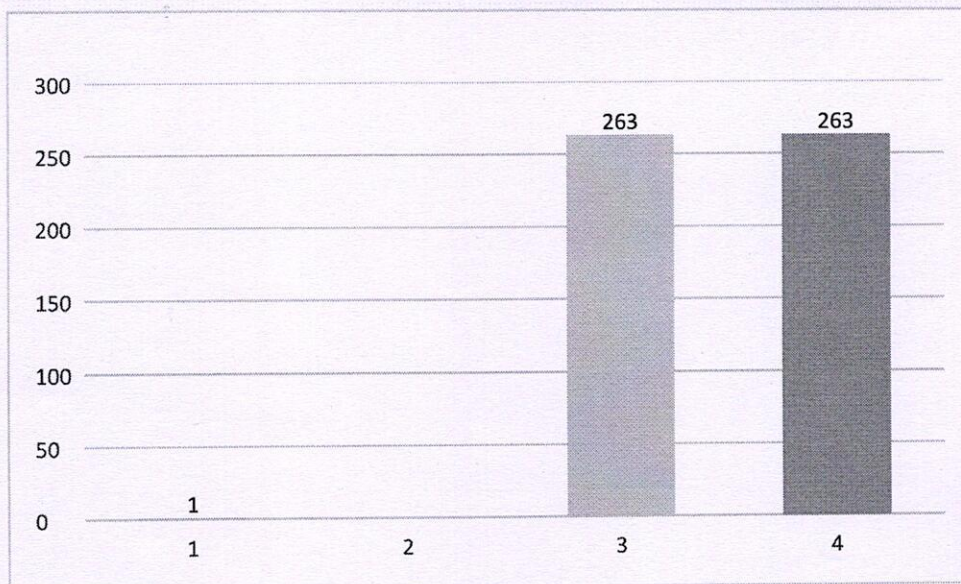


  
Prof. T. THIRUNAVUKKARASU, M.D., D.A.,  
Dean  
Velammal Medical College Hospital  
and Research Institute  
"Velammal Village"  
Madurai-Tuticori 8 | Page  
Anuppanadi, Madurai-625 009, T.N.





**VELAMMAL MEDICAL COLLEGE**  
**HOSPITAL AND RESEARCH INSTITUTE**  
**MADURAI - 625009**



*T. Thiruvavukkarasu*  
Prof. T. THIRUVAVUKKARASU, M.D., D.A.,  
Dean

Velammal Medical College Hospital  
and Research Institute

"Velammal Village"  
Madurai-Tuticorin Ring Road

Madurai-625 009, T.N.

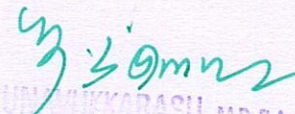




# VELAMMAL MEDICAL COLLEGE HOSPITAL AND RESEARCH INSTITUTE MADURAI - 625009

Out of 527 responses collected from students, the committee analysed the results and following are the findings

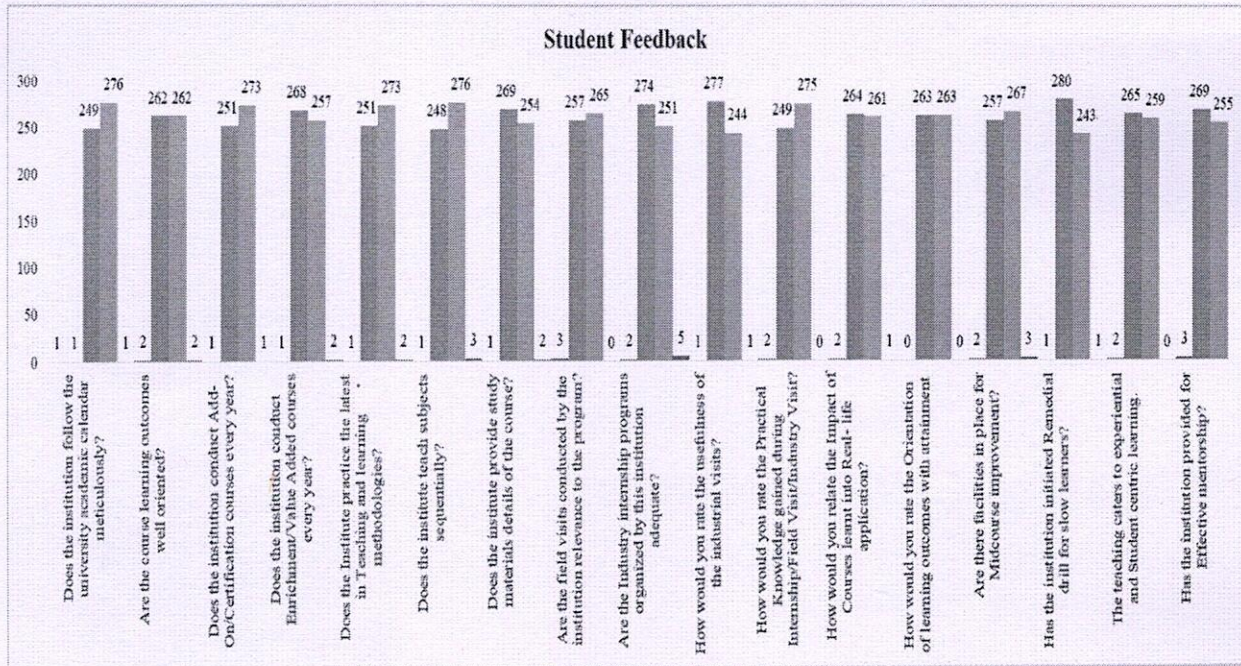
S.No	Questions	Poor	Good	Very Good	Excellent
1	Does the institution follow the university academic calendar meticulously?	0.19%	0.19%	47.25%	52.37%
2	Are the course learning outcomes well oriented?	0.19%	0.38%	49.72%	49.72%
3	Does the institution conduct Add-On/Certification courses every year?	0.38%	0.19%	47.63%	51.80%
4	Does the institution conduct Enrichment/Value Added courses every year?	0.19%	0.19%	50.85%	48.77%
5	Does the Institute practice the latest in Teaching and learning methodologies?	0.38%	0.19%	47.63%	51.80%
6	Does the institute teach subjects sequentially?	0.38%	0.19%	47.06%	52.37%
7	Does the institute provide study materials details of the course?	0.57%	0.19%	51.04%	48.20%
8	Are the field visits conducted by the institution relevance to the program?	0.38%	0.57%	48.77%	50.28%
9	Are the Industry internship programs organized by this institution adequate?	0.00%	0.38%	51.99%	47.63%
10	How would you rate the usefulness of the industrial visits?	0.95%	0.19%	52.56%	46.30%
11	How would you rate the Practical Knowledge gained during Internship/Field Visit/Industry Visit?	0.19%	0.38%	47.25%	52.18%
12	How would you relate the Impact of Courses learnt into Real- life application?	0.00%	0.38%	50.09%	49.53%
13	How would you rate the Orientation of learning outcomes with attainment	0.19%	0.00%	49.91%	49.91%
14	Are there facilities in place for Midcourse improvement?	0.00%	0.38%	48.77%	50.66%

  
 Prof. T. THIRUNAVUKKARASU, M.D., D.A.,  
 Dean  
 Velammal Medical College Hospital  
 and Research Institute  
 "Velammal Village"  
 Madurai-Tuticorin Road  
 Anuppanadi, Madurai - 625 009, T.N.





# VELAMMAL MEDICAL COLLEGE HOSPITAL AND RESEARCH INSTITUTE MADURAI - 625009



Based on the analysis of 527 student responses, a significant percentage of students rated the institution highly (4 - "Excellent" and 3 - "Very Good") on various aspects of the academic and practical learning environment. Specifically, **99% of students** rated the following as either "Very Good" or "Excellent":

1. The institution's adherence to the university academic calendar.
2. The orientation of course learning outcomes.
3. The offering of annual Add-On/Certification courses.
4. The provision of Enrichment/Value-Added courses each year.
5. The practice of modern teaching and learning methodologies.
6. The sequential organization of subjects within the curriculum.
7. The availability of detailed study materials for courses.
8. The relevance of field visits to the program's learning goals.
9. The adequacy of industry internship programs.
10. The usefulness of industrial visits.
11. The practical knowledge gained through internships, field visits, and industry exposure.
12. The applicability of course knowledge to real-life situations.
13. The alignment of learning outcomes with attainment.
14. Facilities for mid-course improvements.

This positive feedback reflects the institution's commitment to delivering a well-rounded, practical, and organized learning experience that supports student growth both academically and professionally.

Prof. T. THIRUNAVUKKARASU, M.D., D.A.,  
Dean

Velammal Medical College Hospital  
and Research Institute

"Vel11 | Pages"

Madurai-Tuticorin Ring Road  
Anupandadi, Madurai-625 009, T.N.





# **VELAMMAL MEDICAL COLLEGE**

## **HOSPITAL AND RESEARCH INSTITUTE**

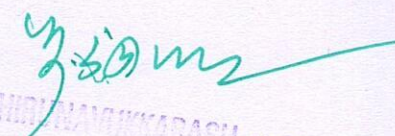
**MADURAI - 625009**

**However, the committee recommended improvements for the following questions:**

1. Are the field visits conducted by the institution relevant to the program?
2. Are the industry internship programs organized by this institution adequate?
3. Are there facilities in place for mid-course improvement?
4. Does the institution provide effective mentorship?

**Suggestions:**

1. Increase the number of field visits and internships to offer more practical exposure.
2. Ensure industrial visits align closely with syllabus content to maximize learning relevance.
3. Provide additional opportunities and resources for mid-course improvement to address student needs.
4. Implement specific remedial classes for slow learners to support their academic progress.
5. Strengthen mentorship programs to guide students in both academic and career development areas.

  
Prof. T. THIRUNAVUKKARASU, M.D., D.A.,  
Dean  
Velammal Medical College Hospital  
and Research Institute  
"Velammal Village"  
Medurai-Tutukudi Road  
Anuppanadi, Madurai-625 009, T.N.





# VELAMMAL MEDICAL COLLEGE HOSPITAL AND RESEARCH INSTITUTE MADURAI - 625009

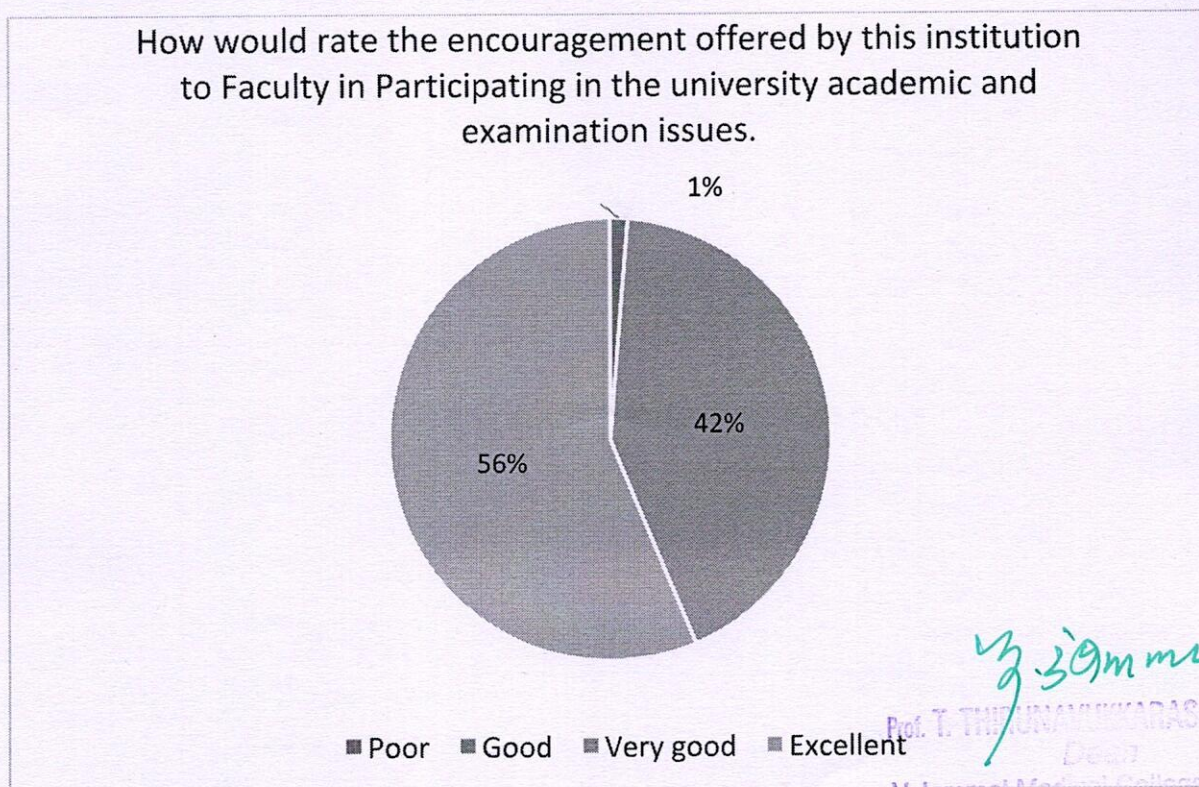
## Faculty Feedback

Faculty Questionnaire contains following questions

1. How would rate the encouragement offered by this institution to Faculty in Participating in the university academic and examination issues?
2. Is the program outcome relevant to the topics in the syllabus?
3. Rate the inclusion of modern/advanced topics into the curriculum.
4. Is the design of the program adequate to help the students to become industry ready
5. How would you rate the effectiveness of the sequence of the course in the program?
6. How would you rate the effectiveness of the sequence of the topics?
7. How would you rate the Size of syllabus and the load it lays on the students?
8. How would you rate the Evaluation scheme designed for each of the course?
9. How would you rate the course design to help in real life application?
10. How would you rate the adequacy of provision for online/offline facilities to access study materials for teaching and learning?
11. How would you rate the implemented curriculum to career orientation, employability and skill development?

The feedback committee has collected responses from 300 Teaching Staff and analyzed the result. Following are the findings of the committee.

Question-wise Analysis Report is as follows.



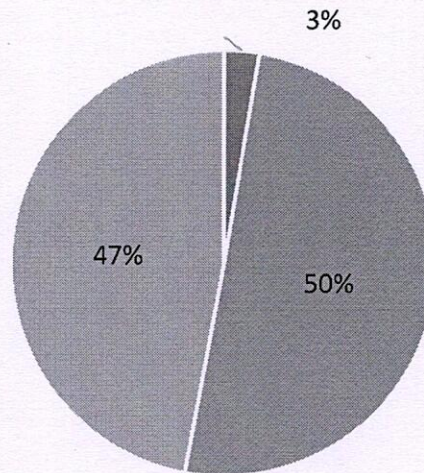
*T. Thirunavukarasu*  
Prof. T. THIRUNAVUKARASU, M.D., D.A.,  
Dean  
Velammal Medical College Hospital  
and Research Institute,  
"Velammal Village"  
Madurai-Tuticorin Highway  
Anappanadi, Madurai-625 009, T.N.





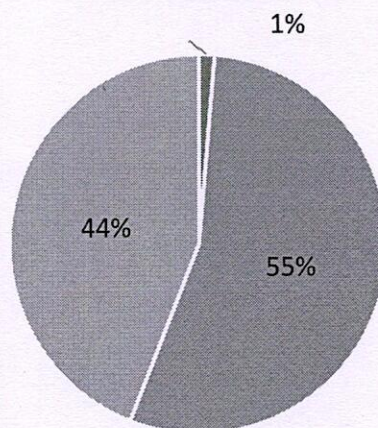
# VELAMMAL MEDICAL COLLEGE HOSPITAL AND RESEARCH INSTITUTE MADURAI - 625009

Is the program outcome relevant to the topics in the syllabus?



■ Poor ■ Good ■ Very good ■ Excellent

Rate the inclusion of modern/advanced topics into the curriculum.



■ Poor ■ Good ■ Very good ■ Excellent

Prof. T. THIRUNAVUKKARASU, M.D.,D.A.,  
Dean

Velammal Medical College Hospital  
and Research Institute  
"Velammal Village"

Madurai-Tulicorin Ring Road

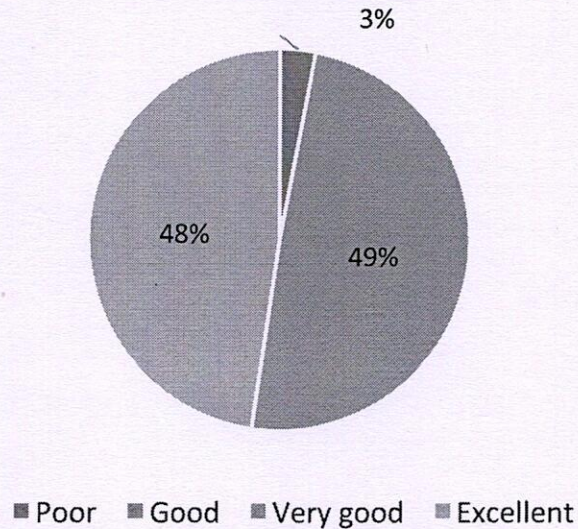
Arundel, Madurai-625 009, T.N.



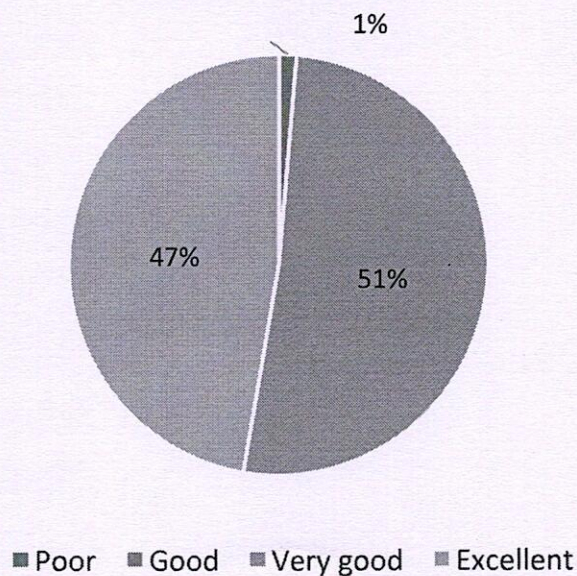


# VELAMMAL MEDICAL COLLEGE HOSPITAL AND RESEARCH INSTITUTE MADURAI - 625009

Is the design of the program adequate to help the students to become industry ready



How would you rate the effectiveness of the sequence of the course in the program?



*T. Thirunavukkarasu*  
Prof. T. THIRUNAVUKKARASU, M.D., D.A.,  
Dean

Velammal Medical College Hospital  
and Research Institute  
"Velammal Village"

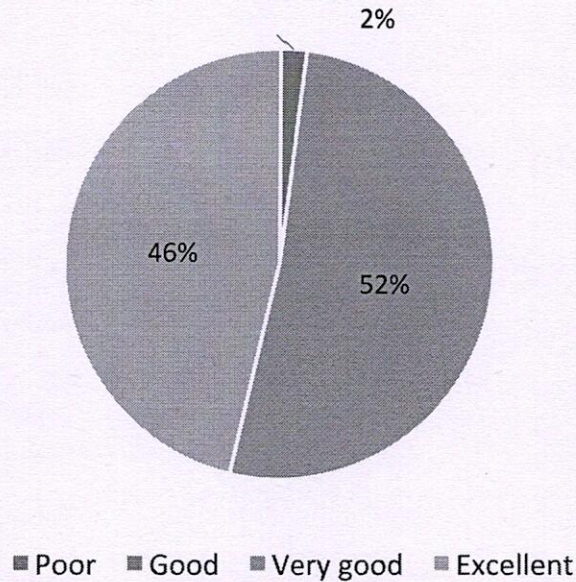
Madurai - 625 009, T.N.  
15 | Page



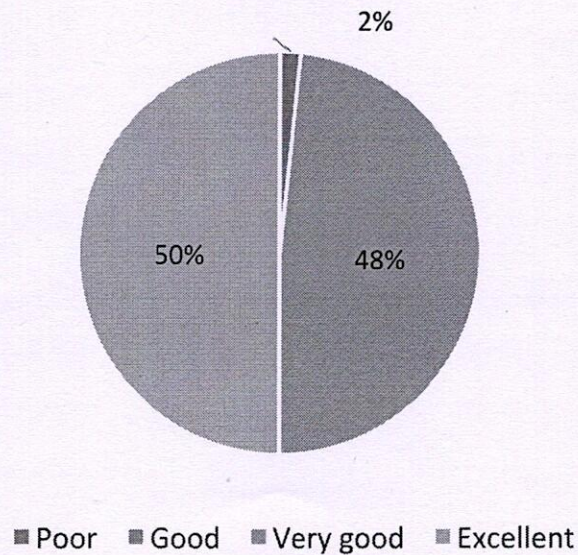


**VELAMMAL MEDICAL COLLEGE**  
**HOSPITAL AND RESEARCH INSTITUTE**  
**MADURAI - 625009**

How would you rate the effectiveness of the sequence of the topics.



How would you rate the Size of syllabus and the load it lays on the students?



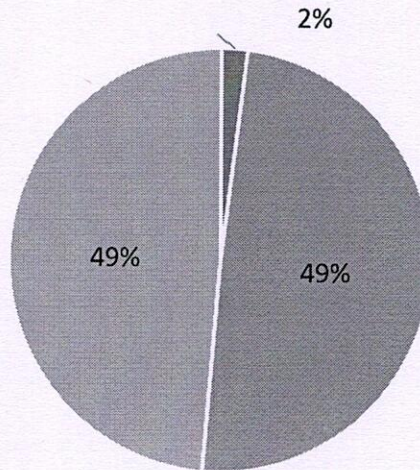
*Thirunavukarasu*  
Prof. T. THIRUNAVUKARASU, M.D., B.A.,  
Dean  
Velammal Medical College Hospital  
and Research Institute  
"Velammal Village"  
Madurai-Tuticorin  
Anuppanadi, Madurai-625 009, T.N.,





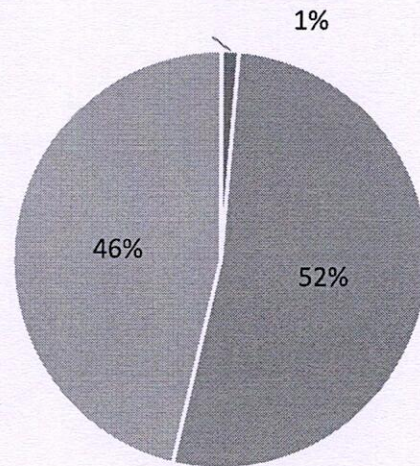
# VELAMMAL MEDICAL COLLEGE HOSPITAL AND RESEARCH INSTITUTE MADURAI - 625009

How would you rate the Evaluation scheme designed for each of the course?



■ Poor ■ Good ■ Very good ■ Excellent

How would you rate the course design to help in real life application?



■ Poor ■ Good ■ Very good ■ Excellent

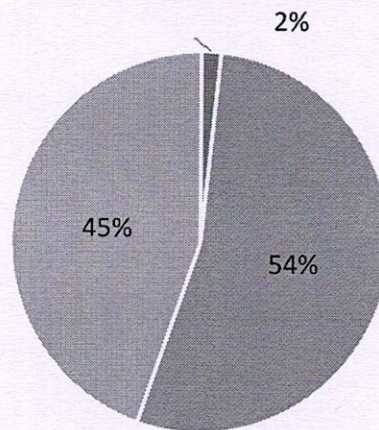
*T. Tirunavukarasu*  
Prof. T. TIRUNAVUKARASU, M.D., D.A.,  
Dean  
Velammal Medical College Hospital  
and Research Institute  
"Velammal"  
Madurai-Tuticorin Ring Road  
Anuppanadi, Madurai-625 009, T.N.





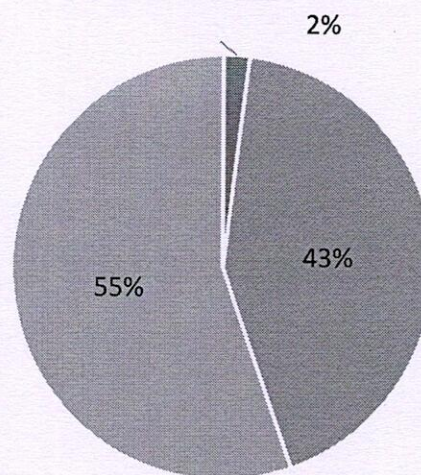
# VELAMMAL MEDICAL COLLEGE HOSPITAL AND RESEARCH INSTITUTE MADURAI - 625009

How would you rate the adequacy of provision for online/offline facilities to access study materials for teaching and learning?



■ Poor ■ Good ■ Very good ■ Excellent

How would you rate the implemented curriculum to career orientation, employability and skill development?



■ Poor ■ Good ■ Very good ■ Excellent

Prof. T. THIRUNAVUKARASU, M.D., D.A.,  
Dean

Velammal Medical College Hospital  
and Research Institute

"Velammal Village"  
Madurai-Tuticottin Ring Road  
Anuppanadi, Madurai-625 009, T.N.





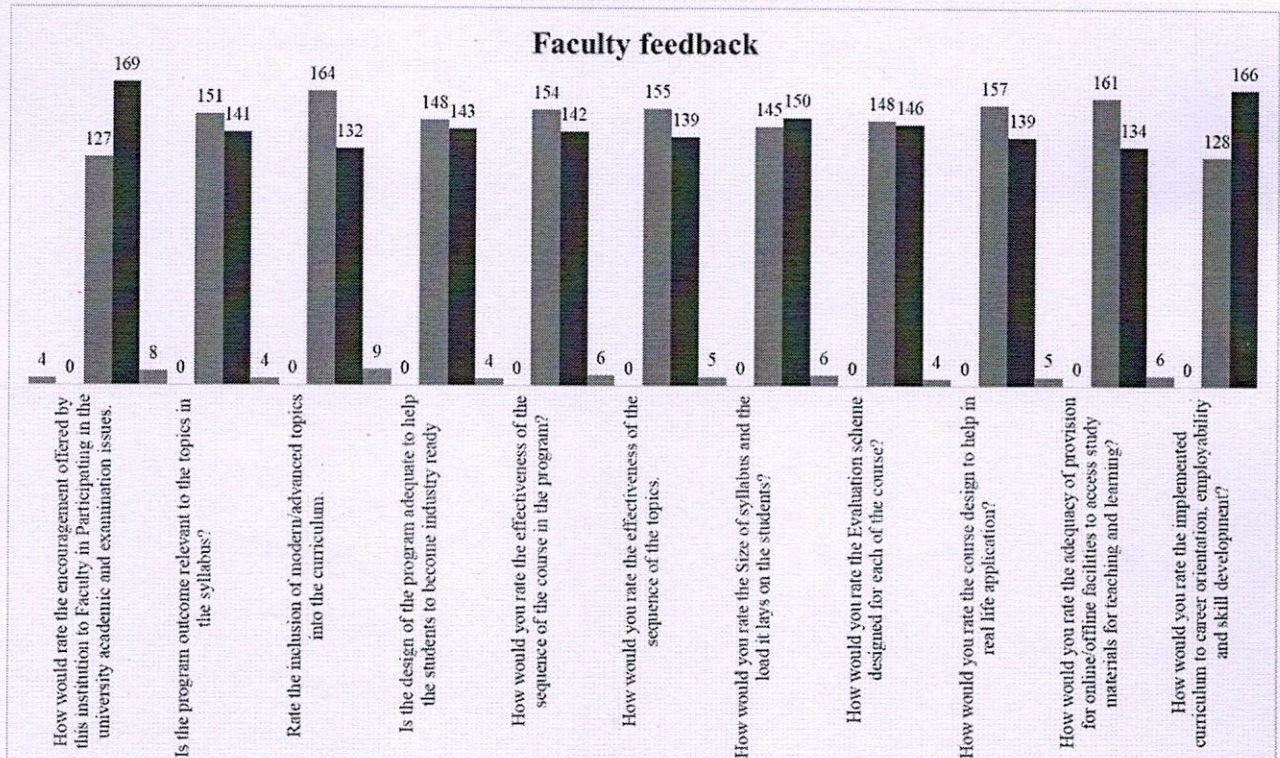
**VELAMMAL MEDICAL COLLEGE**  
**HOSPITAL AND RESEARCH INSTITUTE**  
**MADURAI - 625009**

S.No	Questions	Poor	Good	Very good	Excellent
1	How would rate the encouragement offered by this institution to Faculty in Participating in the university academic and examination issues?	1.3%	0.0%	42.3%	56.3%
2	Is the program outcome relevant to the topics in the syllabus?	2.7%	0.0%	50.3%	47.0%
3	Rate the inclusion of modern/advanced topics into the curriculum.	1.3%	0.0%	54.7%	44.0%
4	Is the design of the program adequate to help the students to become industry ready	3.0%	0.0%	49.3%	47.7%
5	How would you rate the effectiveness of the sequence of the course in the program?	1.3%	0.0%	51.3%	47.3%
6	How would you rate the effectiveness of the sequence of the topics?	2.0%	0.0%	51.7%	46.3%
7	How would you rate the Size of syllabus and the load it lays on the students?	1.7%	0.0%	48.3%	50.0%
8	How would you rate the Evaluation scheme designed for each of the course?	2.0%	0.0%	49.3%	48.7%
9	How would you rate the course design to help in real life application?	1.3%	0.0%	52.3%	46.3%
10	How would you rate the adequacy of provision for online/offline facilities to access study materials for teaching and learning?	1.7%	0.0%	53.7%	44.7%
11	How would you rate the implemented curriculum to career orientation, employability and skill development?	2.0%	0.0%	42.7%	55.3%





# VELAMMAL MEDICAL COLLEGE HOSPITAL AND RESEARCH INSTITUTE MADURAI - 625009



**Based on the faculty feedback analysis, a high percentage of faculty members (over 90%) rated the following aspects as "Very Good" and "Excellent":**

1. Encouragement for faculty participation in academic and examination activities.
2. Relevance of program outcomes to syllabus topics.
3. Inclusion of modern/advanced topics in the curriculum.
4. Program design's effectiveness in preparing students for industry readiness.
5. Effectiveness of the sequence of courses in the program.
6. Logical progression in the sequence of topics.
7. Manageable syllabus size and appropriate workload for students.
8. Well-designed evaluation schemes for each course.
9. Relevance of course design for real-life applications.
10. Adequacy of online/offline resources for accessing study materials.
11. Curriculum's alignment with career orientation, employability, and skill development.

**However, the committee recommended improvements in the following areas:**

1. **Real-Life Application of Courses:** Although rated highly, some faculty suggested enhancing real-world applicability within course design.
2. **Topic and Course Sequencing:** Additional fine-tuning may improve the logical flow and cohesion between topics and courses.
3. **Access to Study Materials:** Ensure broader access to online and offline resources to support faculty and students in teaching and learning activities.

Prof. T. THIRUNAVUKARASU, MD, D.A.  
Dean

Velammal Medical College Hospital  
and Research Institute

Madurai-625 009, T.N.





# **VELAMMAL MEDICAL COLLEGE**

## **HOSPITAL AND RESEARCH INSTITUTE**

### **MADURAI - 625009**

#### **Suggestions:**

1. Introduce more hands-on activities or case studies that connect course content with real-world scenarios.
2. Review and adjust topic sequences to ensure smooth progression and cohesion.
3. Increase the accessibility and availability of online resources and digital materials for easier access to study materials.

  
Prof. T. THIRUNAVUKKARASU, MD, D.A.,  
Dean

Velammal Medical College Hospital  
and Research Institute  
"Velammal Village"

Madurai-Tutic 21 | P a g e d  
Anuppanadi, Madurai-625 009, T.N.





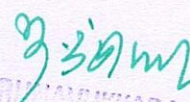
# VELAMMAL MEDICAL COLLEGE HOSPITAL AND RESEARCH INSTITUTE MADURAI - 625009

## Alumni Feedback

Alumni Questionnaire contains following questions

1. How would you rate the adequacy of the Alumni involvement in academic council meeting of the institution?
2. How would you rate the adequacy of the Curriculum offered is in  
1. relation to your current professional standards?
2. How would you rate the adequacy of the content of syllabus is sufficient to bridge the gap between academia and industry?
3. Does the institute seek for the insights of the alumni on syllabi content with global trends?
4. How would you rate the inclusion of latest Teaching and learning methodologies?
5. How would you rate the involvement of the alumni in designing bridge
6. courses offered by the institution?
7. Does the institute provide for the alumni to involve in conducting program specific Industrial visits?
8. Whether the institute involves alumni in offering industrial internships
9. Does the institute provide for alumni to mentor Student projects?
10. How would you rate the design of the course offered and the provision for extra learning or self-learning?
11. How would you rate the support offered by the institution for the overall development of students?
12. The feedback committee has collected responses from 80 Alumni and analyzed the result. Following are the findings of the committee.

Question-wise Analysis Report is as follows.

  
Prof. T. THIRUVANNUKARASU, M.D., D.A.,  
Dean  
Velammal Medical College Hospital  
and Research Institute  
"Velammal Village"  
Madurai-Tuticorin  
Anuppanadi, Madurai-625 009, T.N.

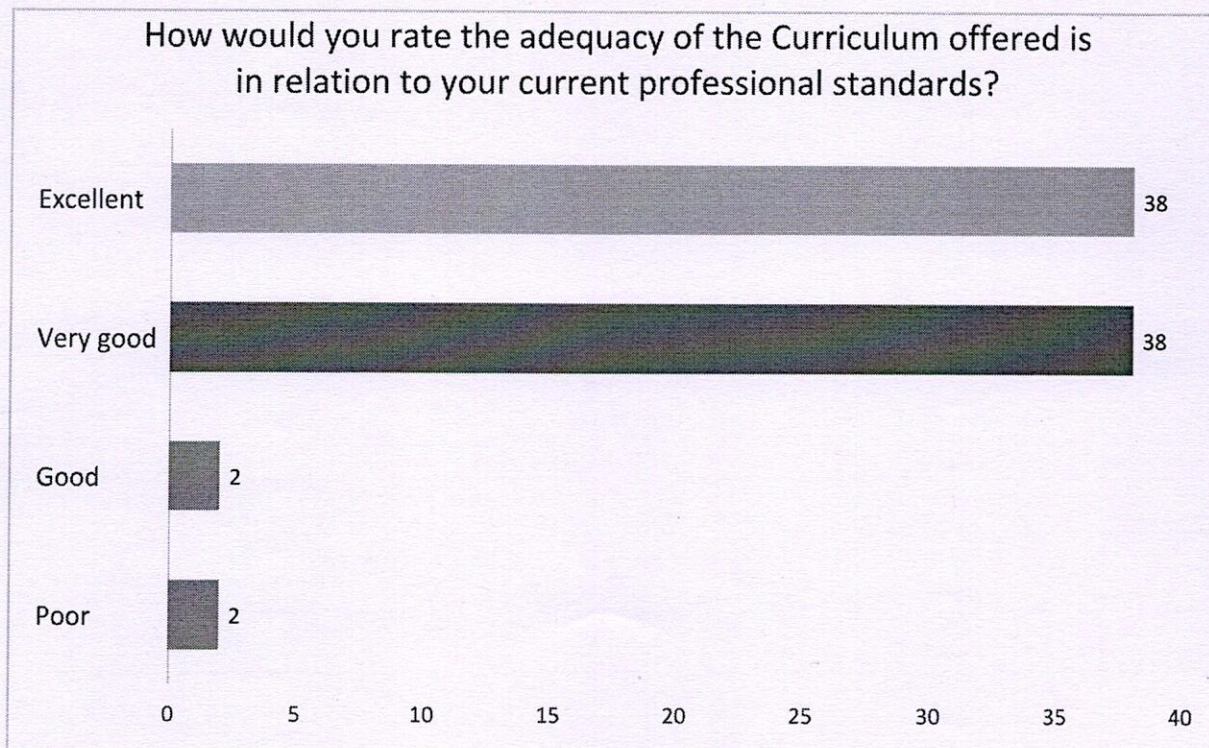
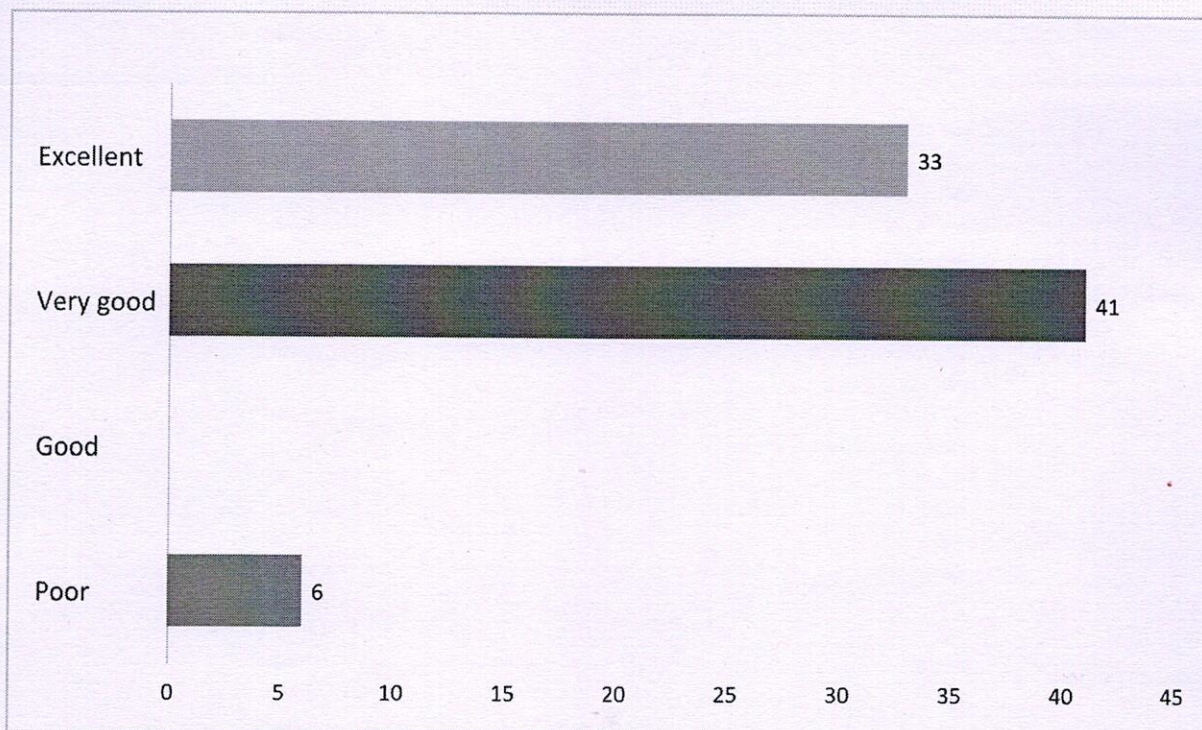




# VELAMMAL MEDICAL COLLEGE

## HOSPITAL AND RESEARCH INSTITUTE

MADURAI - 625009

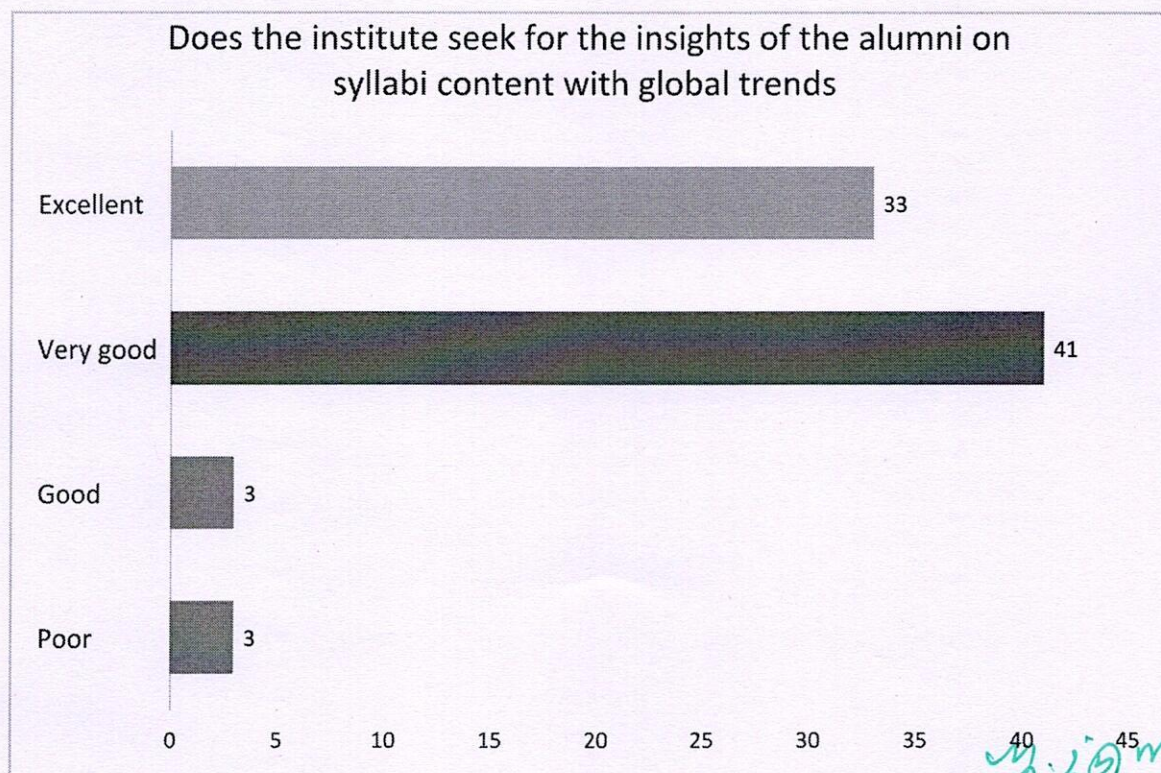
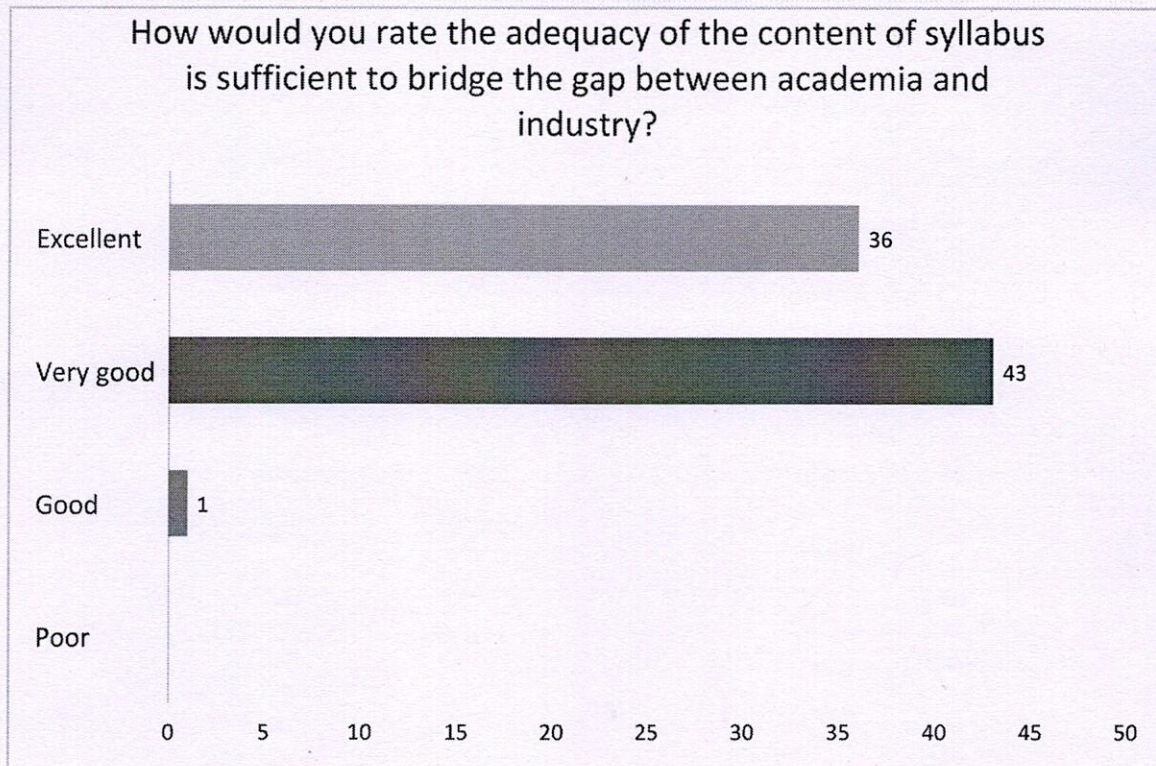


*Thirunavukarasu*  
Prof. T. THIRUNAVUKARASU, M.D., P.A.,  
Dean  
Velammal Medical College Hospital  
and Research Institute  
"Velammal Village"  
Madurai-Tutukudi Road  
Anuppanadi, Madurai-625 009, T.N.





# VELAMMAL MEDICAL COLLEGE HOSPITAL AND RESEARCH INSTITUTE MADURAI - 625009

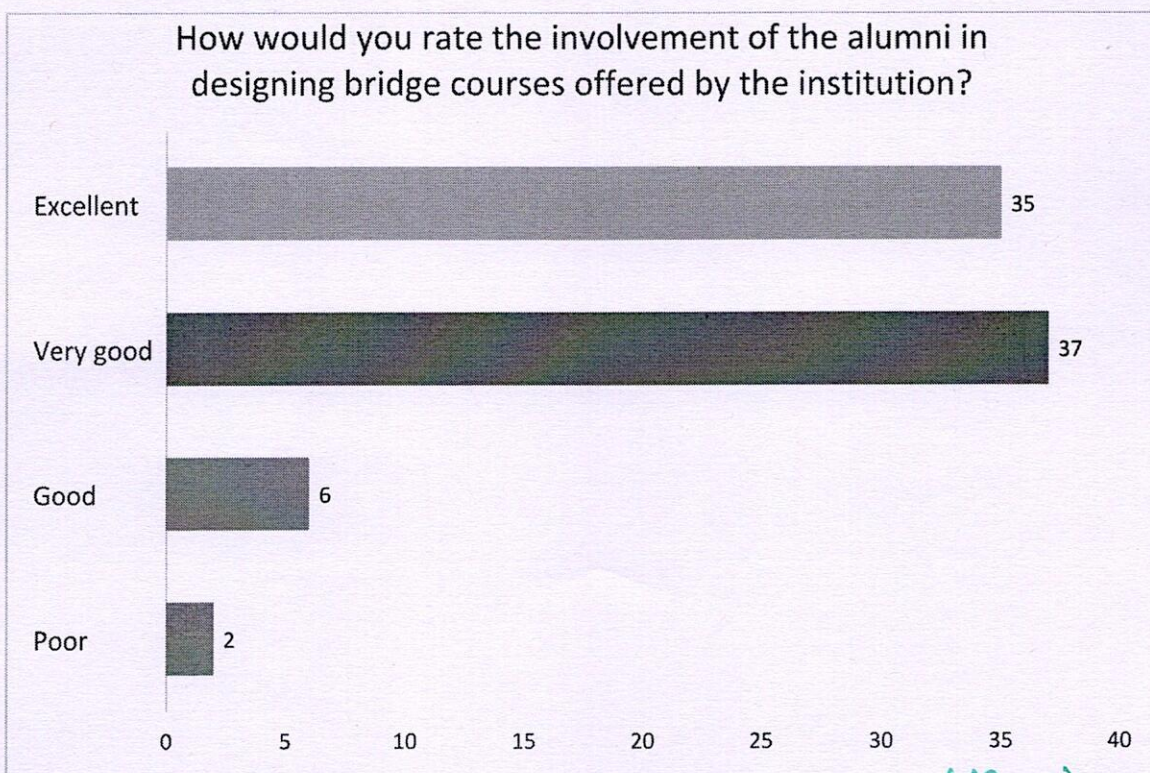
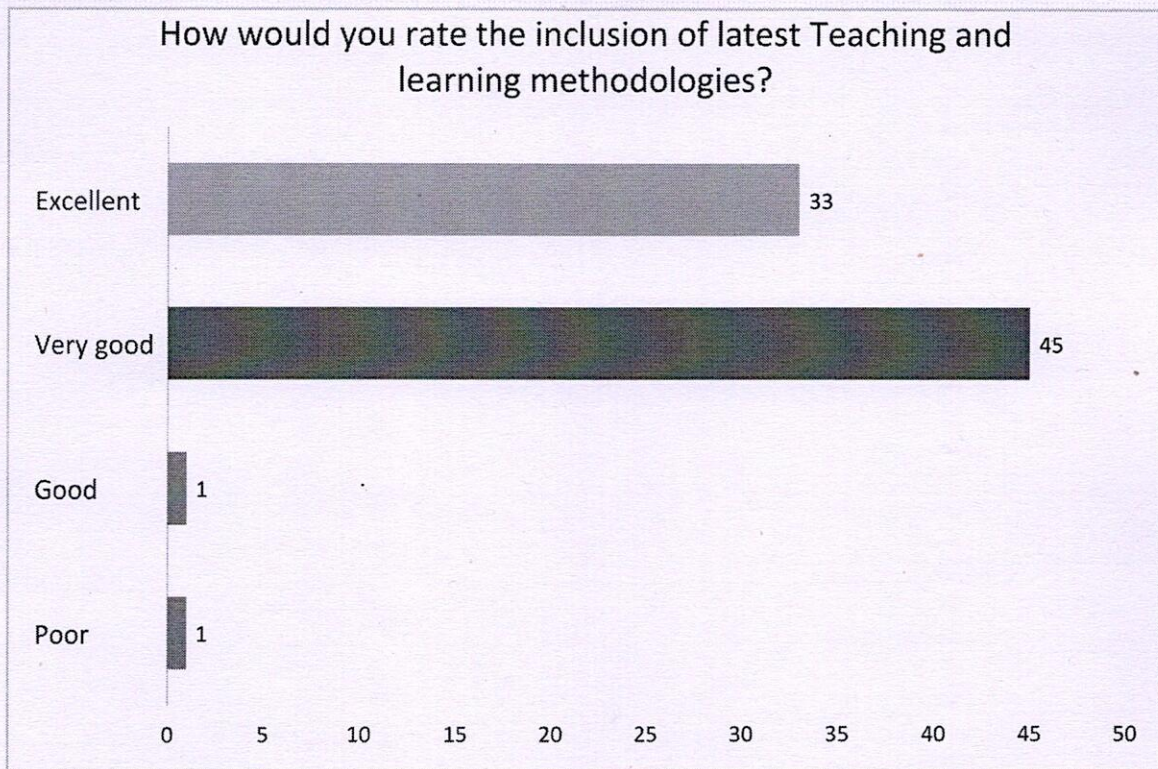


Prof. T. THIRUNAVUKARASU, M.D., D.A.,  
Dean  
Velammal Medical College Hospital  
and Research Institute  
"Velammal Village"  
Madurai-Tulicorin Ring Road  
Anuppanadi, Madurai-625009, T.N.





# VELAMMAL MEDICAL COLLEGE HOSPITAL AND RESEARCH INSTITUTE MADURAI - 625009



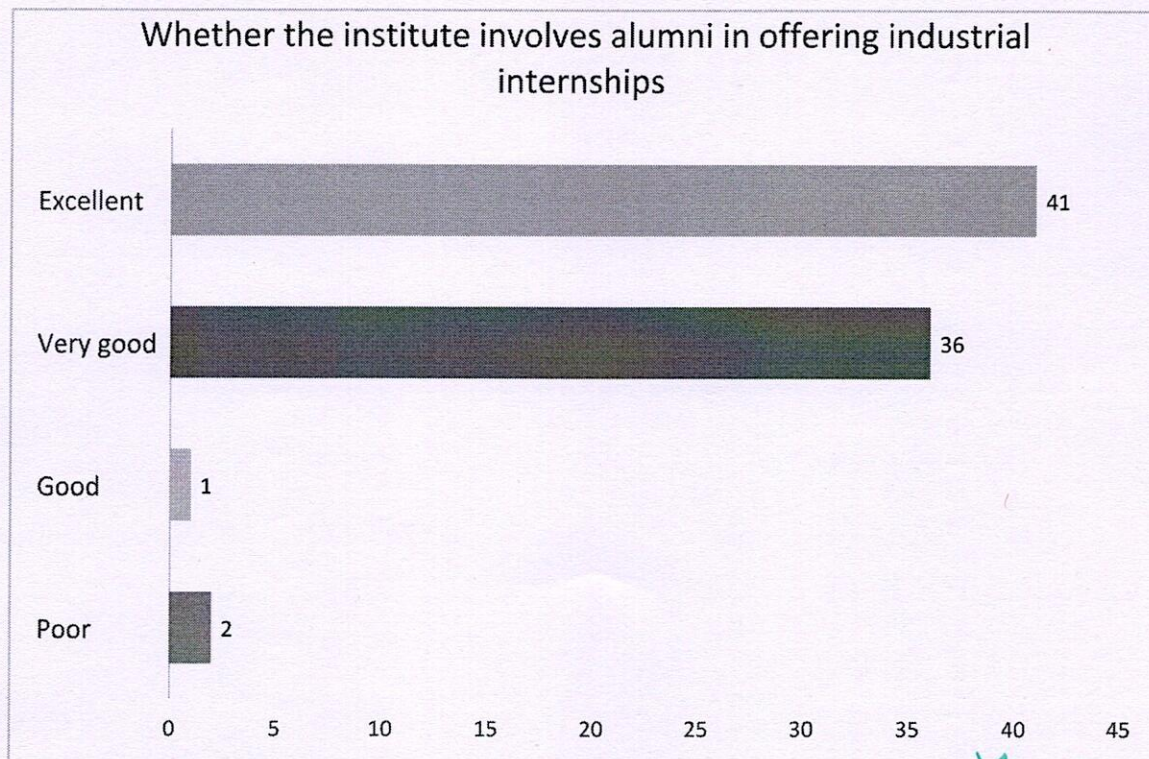
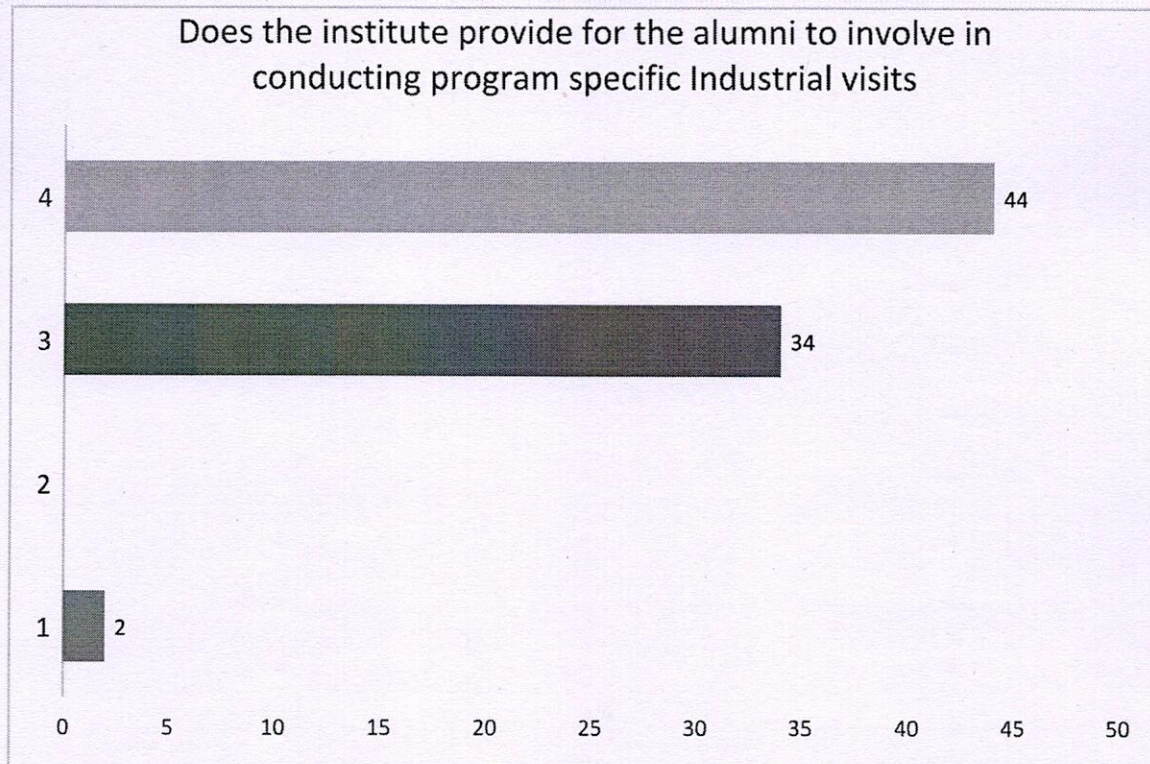




# VELAMMAL MEDICAL COLLEGE

## HOSPITAL AND RESEARCH INSTITUTE

MADURAI - 625009



*3.5/5*

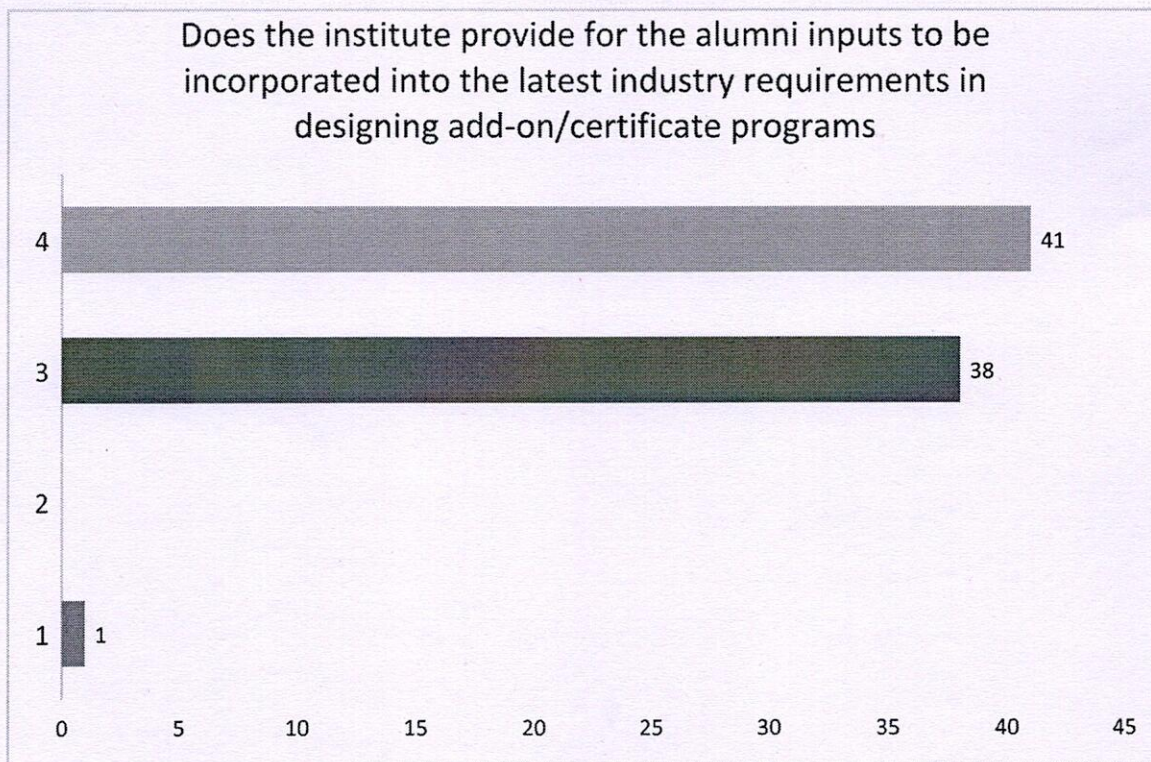
Prof. T. THIRUWIKKARASU, M.D., D.A.  
Dean  
Velammal Medical College Hospital  
and Research Institute  
"Velammal Village"  
Madurai-Tuticorin Road  
Madurai-625 009, T.N.



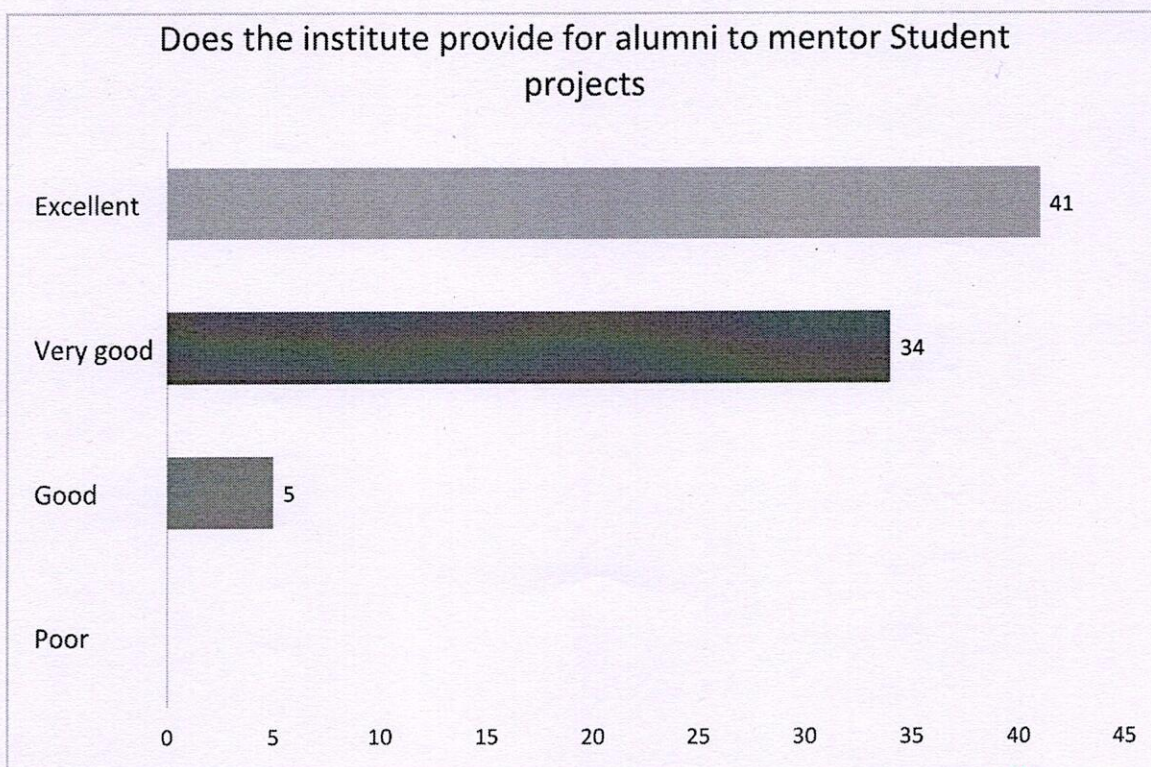


# VELAMMAL MEDICAL COLLEGE HOSPITAL AND RESEARCH INSTITUTE MADURAI - 625009

Does the institute provide for the alumni inputs to be incorporated into the latest industry requirements in designing add-on/certificate programs



Does the institute provide for alumni to mentor Student projects

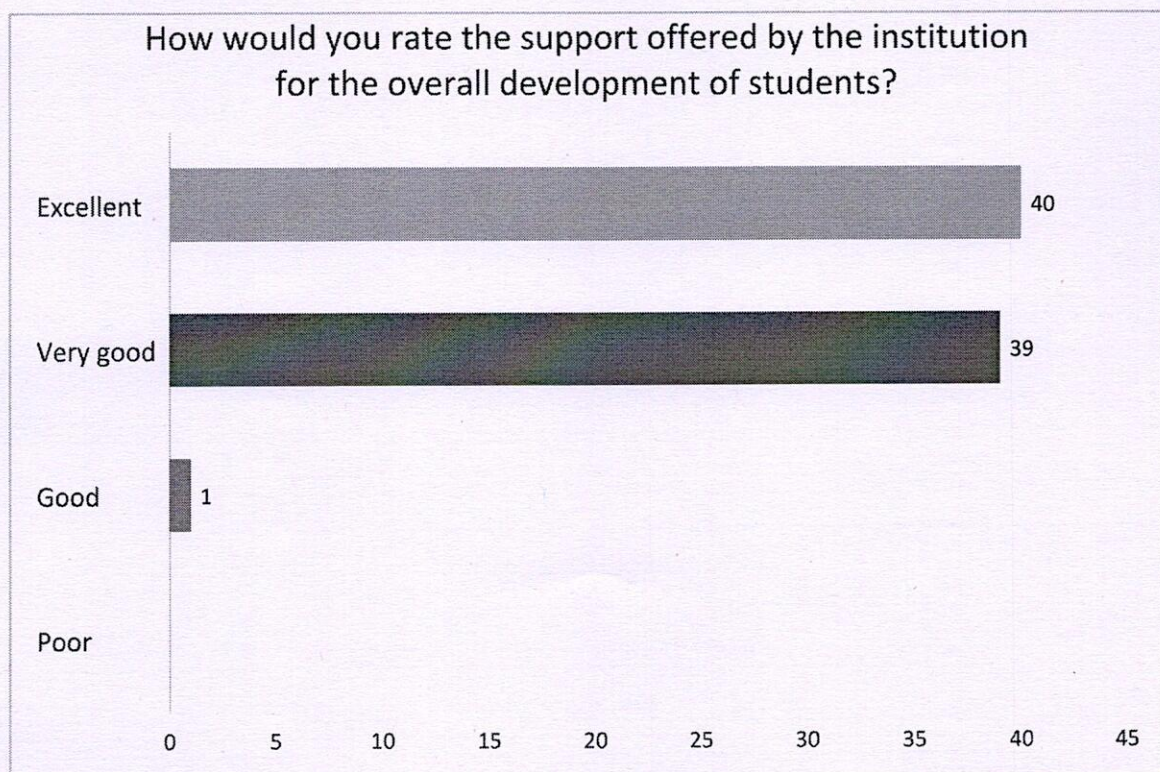
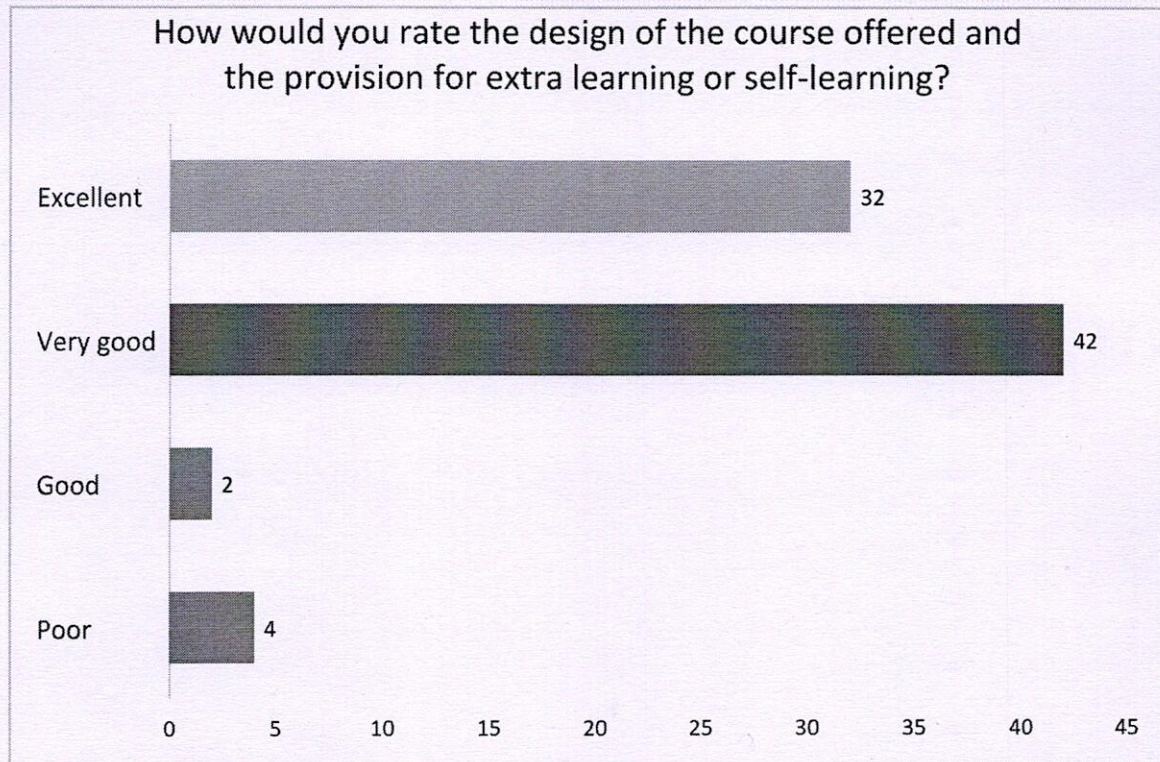


*3.50 m*  
Prof. T. THIRUNAVUKKARASU, M.D., D.A.,  
Dean  
Velammal Medical College Hospital  
and Research Institute  
"Velammal Village"  
Medurai-Tuticori  
Anuppanadi, Madurai-625 009, T.N.





# VELAMMAL MEDICAL COLLEGE HOSPITAL AND RESEARCH INSTITUTE MADURAI - 625009



*Prof. T. THIRUNAVUKKARASU, M.D., D.A.,  
Dean  
Velammal Medical College Hospital  
and Research Institute  
"Velammal Village"  
Madurai-Tamil Nadu  
625009, Madurai, Tamil Nadu, T.N.*





# VELAMMAL MEDICAL COLLEGE HOSPITAL AND RESEARCH INSTITUTE MADURAI - 625009

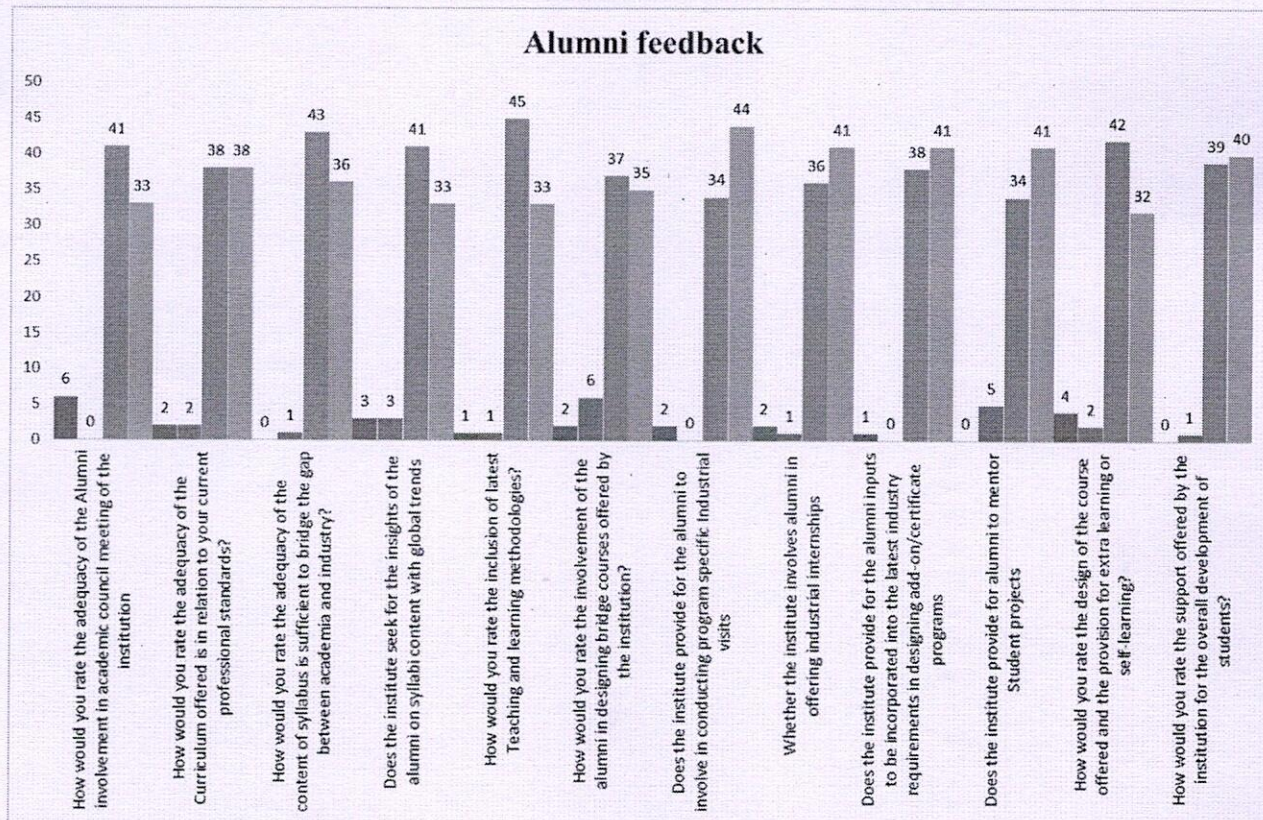
Out of 80 responses collected from alumni, the committee analysed the results and following are the finds

S.No	Questions	Poor	Good	Very good	Excellent
1	How would you rate the adequacy of the Alumni involvement in academic council meeting of the institution	7.50%	0.00%	51.25%	41.25%
2	How would you rate the adequacy of the Curriculum offered is in relation to your current professional standards?	2.50%	2.50%	47.50%	47.50%
3	How would you rate the adequacy of the content of syllabus is sufficient to bridge the gap between academia and industry?	0.00%	1.25%	53.75%	45.00%
4	Does the institute seek for the insights of the alumni on syllabi content with global trends	3.75%	3.75%	51.25%	41.25%
5	How would you rate the inclusion of latest Teaching and learning methodologies?	1.25%	1.25%	56.25%	41.25%
6	How would you rate the involvement of the alumni in designing bridge courses offered by the institution?	2.50%	7.50%	46.25%	43.75%
7	Does the institute provide for the alumni to involve in conducting program specific Industrial visits	2.50%	0.00%	42.50%	55.00%
8	Whether the institute involves alumni in offering industrial internships	2.50%	1.25%	45.00%	51.25%
9	Does the institute provide for the alumni inputs to be incorporated into the latest industry requirements in designing add-on/certificate programs	1.25%	0.00%	47.50%	51.25%
10	Does the institute provide for alumni to mentor Student projects	0.00%	6.25%	42.50%	51.25%
11	How would you rate the design of the course offered and the provision for extra learning or self-learning?	5.00%	2.50%	52.50%	40.00%
12	How would you rate the support offered by the institution for the overall development of students?	0.00%	1.25%	48.75%	50.00%



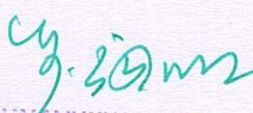


# VELAMMAL MEDICAL COLLEGE HOSPITAL AND RESEARCH INSTITUTE MADURAI - 625009



**Based on alumni feedback, a high percentage of alumni (over 90%) rated the following aspects as "Very Good" and "Excellent":**

1. Adequacy of alumni involvement in academic council meetings.
2. Relevance of curriculum to current professional standards.
3. Content sufficiency in bridging the gap between academia and industry.
4. Alignment of syllabi content with global trends through alumni insights.
5. Inclusion of the latest teaching and learning methodologies.
6. Alumni involvement in designing bridge courses.
7. Alumni-supported program-specific industrial visits.
8. Alumni involvement in offering industrial internships.
9. Incorporation of alumni input on industry needs in add-on/certificate programs.
10. Alumni support in mentoring student projects.
11. Course design for additional learning or self-learning opportunities.
12. Institutional support for the overall development of students.

  
 Prof. T. THIRUNAVUKKARASU, M.D., D.A.,  
 Dean  
 Velammal Medical College Hospital  
 and Research Institute  
 "Velammal Village"  
 Madurai-Tuticorin Road,  
 Anuppanadi, Madurai-625 009, T.N.





# VELAMMAL MEDICAL COLLEGE

## HOSPITAL AND RESEARCH INSTITUTE

MADURAI - 625009

However, the committee recommended improvements in the following areas:

1. **Alumni Involvement in Academic and Curriculum Design:** Some alumni suggested increased involvement in academic council meetings and curriculum updates.
2. **Mentorship and Program Development:** Alumni requested further opportunities for mentoring student projects and contributing to program development based on industry standards.
3. **Bridge Courses and Industrial Internships:** Alumni proposed expanding their role in designing bridge courses and internships.

### Suggestions:

1. Increase alumni participation in curriculum discussions to better align with current professional standards and industry trends.
2. Provide more structured mentorship opportunities, allowing alumni to support students' project-based learning.
3. Expand alumni-led bridge courses and internships to enhance industry readiness for students.





# VELAMMAL MEDICAL COLLEGE HOSPITAL AND RESEARCH INSTITUTE MADURAI - 625009

## Employer Feedback

Employer Questionnaire contains following questions

1. Does the institute involve employer in academic council meeting of the institution?
2. Does the offered curriculum relate relevantly to your current professional Standards?
3. How would you rate the sufficiency of the content of syllabus to bridge the gap between academia and industry?
4. Does the institute seek for the employer insights on syllabi content with global trends?
5. Does the institute include the practice of including the latest teaching and learning methodologies?
6. Does the institute involve the employer in designing bridge courses?
7. Does the institute involve the employer in conducting program specific industrial visits?
8. Does the institute involve the employer in offering industrial internships?
9. Does this institute provide for employer to mentor for student projects?
10. How would you rate the design of the course offered in providing scope for extra learning or self-learning?
11. How would you rate the support offered by the institute to the overall development of students?

The feedback committee has collected responses from 54 Employers and analyzed the result. Following are the findings of the committee.

Question wise Analysis report is as follows.

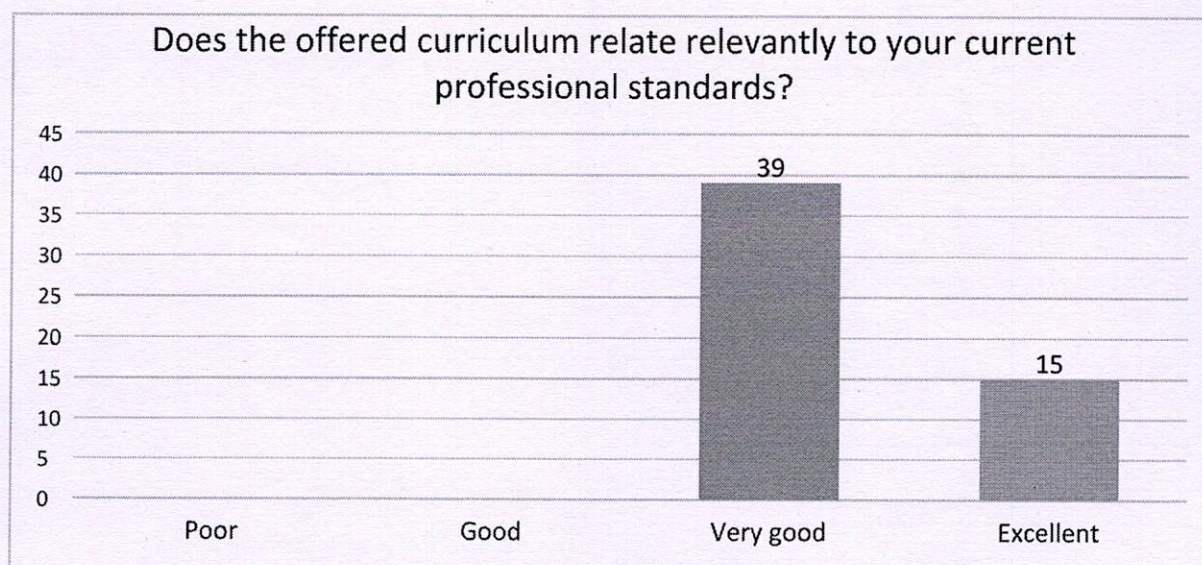
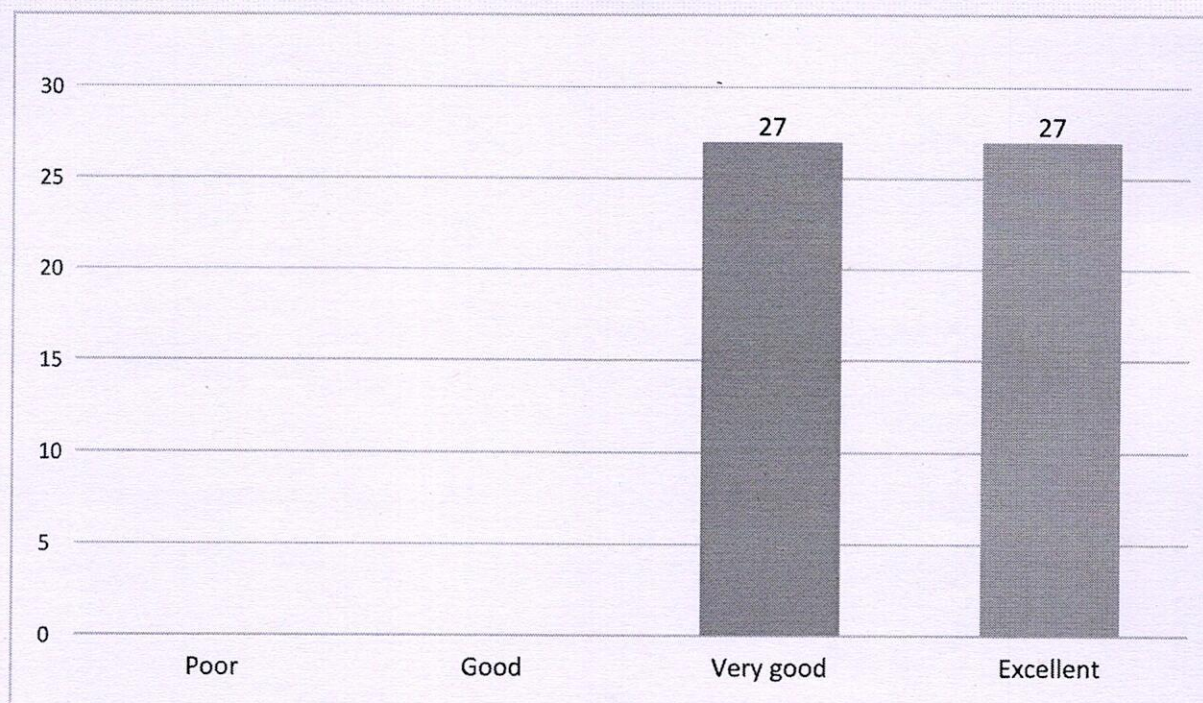




# VELAMMAL MEDICAL COLLEGE

## HOSPITAL AND RESEARCH INSTITUTE

MADURAI - 625009

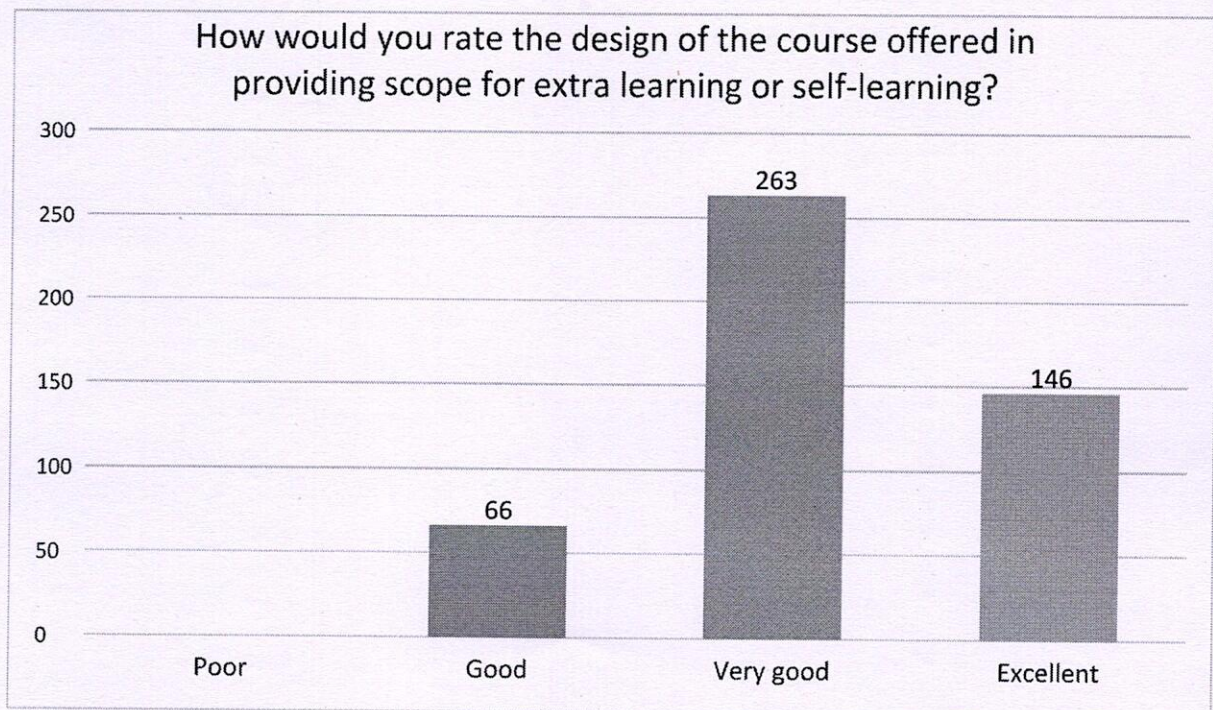
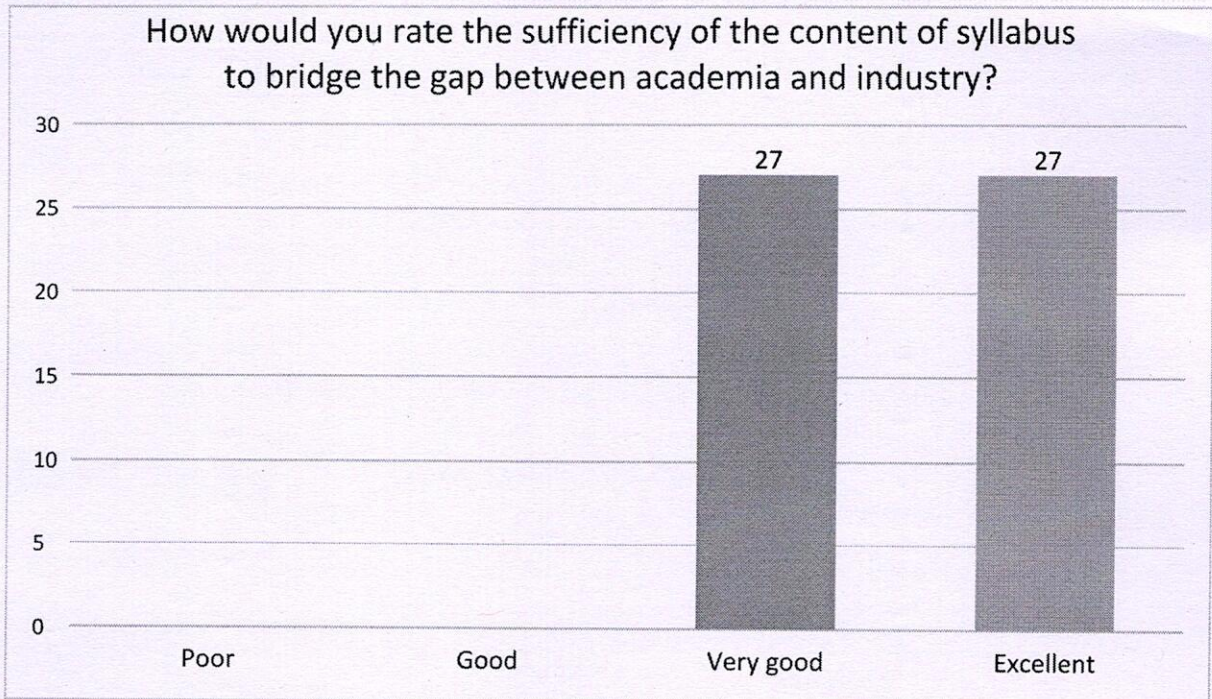


*T. Thirumangalakudi*  
Prof. T. THIRUMANGALAKUDI, M.D., M.A.,  
Dean  
Velammal Medical College Hospital  
and Research Institute  
"Velammal Village"  
Madurai-Tulicottai Road  
Anuppanadi, Madurai-625 009, T.N.





# VELAMMAL MEDICAL COLLEGE HOSPITAL AND RESEARCH INSTITUTE MADURAI - 625009

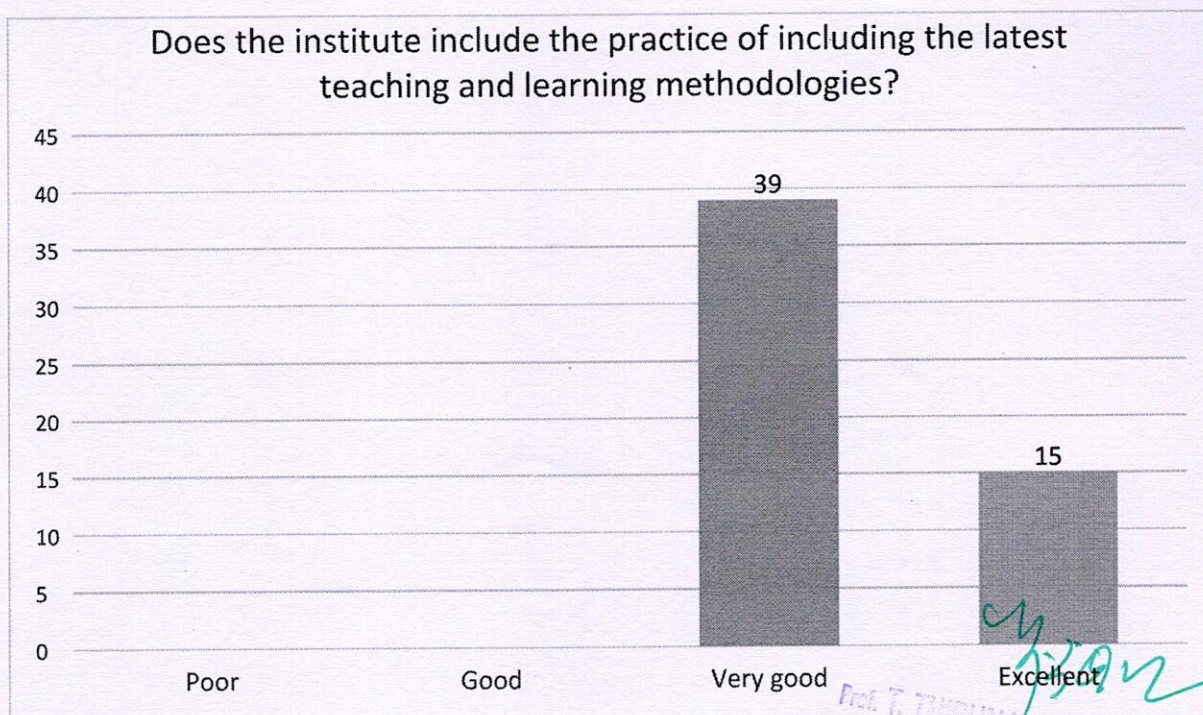
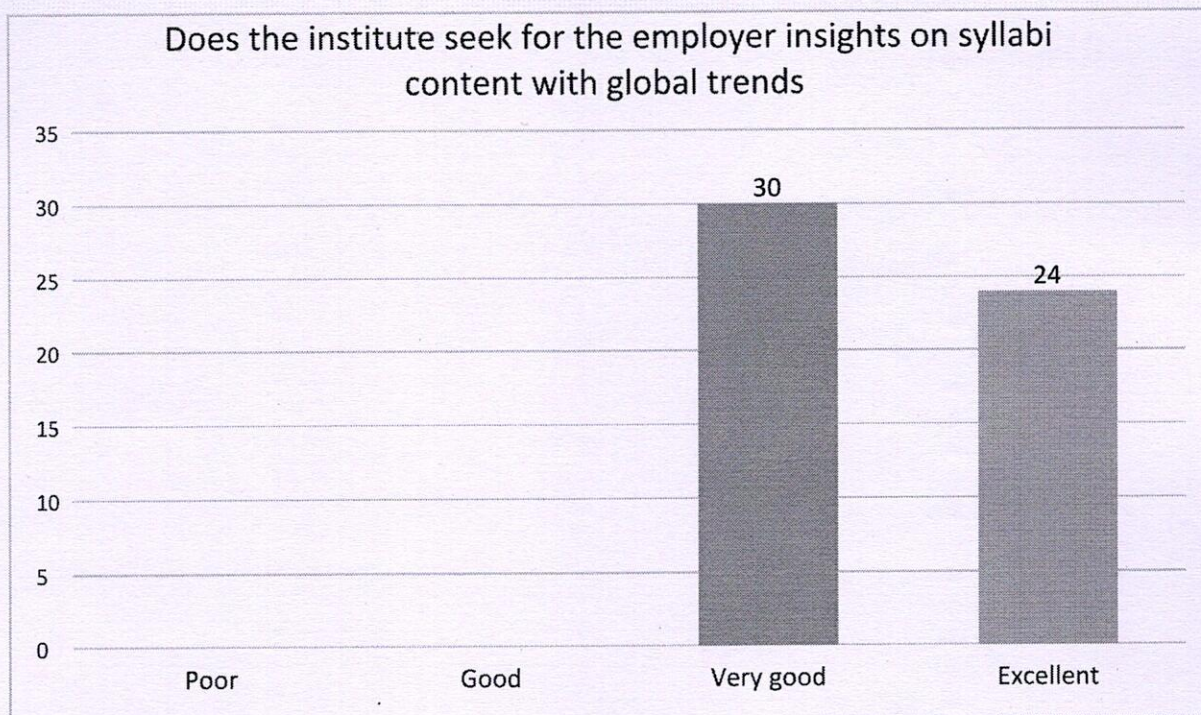


*cy. 30/11/22*  
Prof. T. THIRUNAVUKARASU, M.D., D.A.,  
Dean  
Velammal Medical College Hospital  
and Research Institute  
"Velammal Village"  
Medurai-Tulsi Road  
Anuppanadi, Madurai-625 009, T.N.





**VELAMMAL MEDICAL COLLEGE**  
**HOSPITAL AND RESEARCH INSTITUTE**  
**MADURAI - 625009**

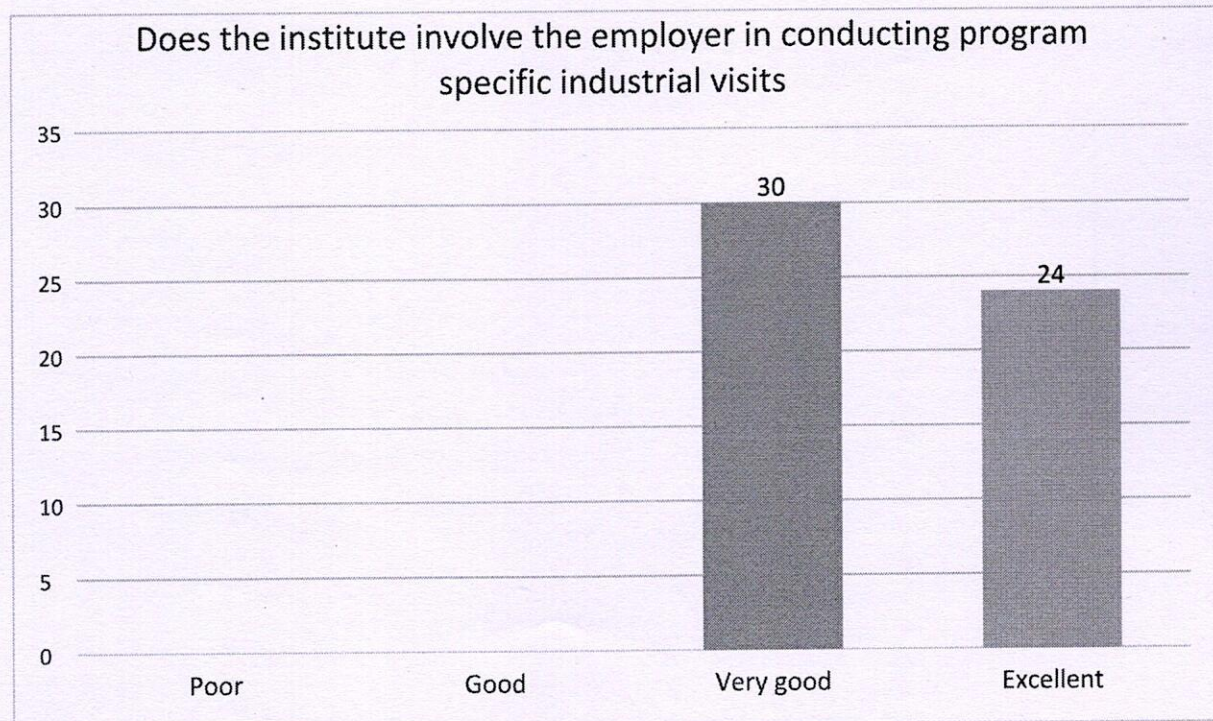
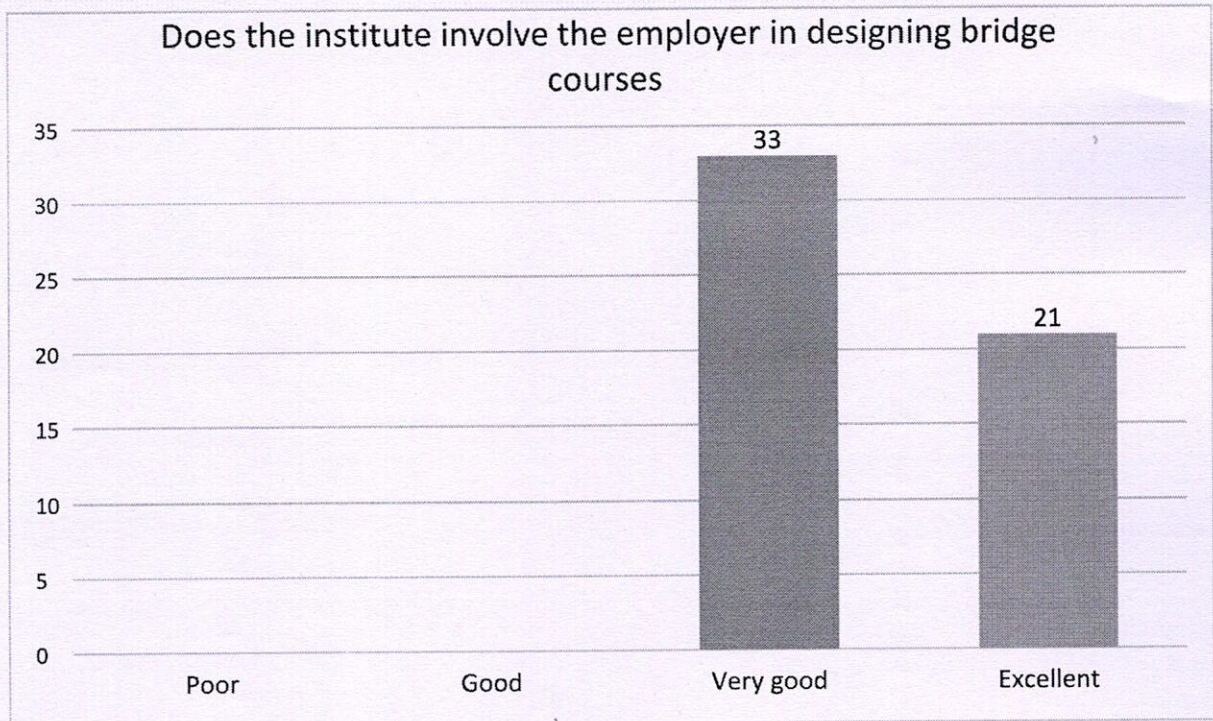


Prof. T. THIRUNAVUKKARASU, M.D., D.A.,  
Dean  
Velammal Medical College Hospital  
and Research Institute  
"Velammal Village"  
Madurai-Tuticorin Road  
Anuppanadi, Madurai-625 009, T.N.





# VELAMMAL MEDICAL COLLEGE HOSPITAL AND RESEARCH INSTITUTE MADURAI - 625009

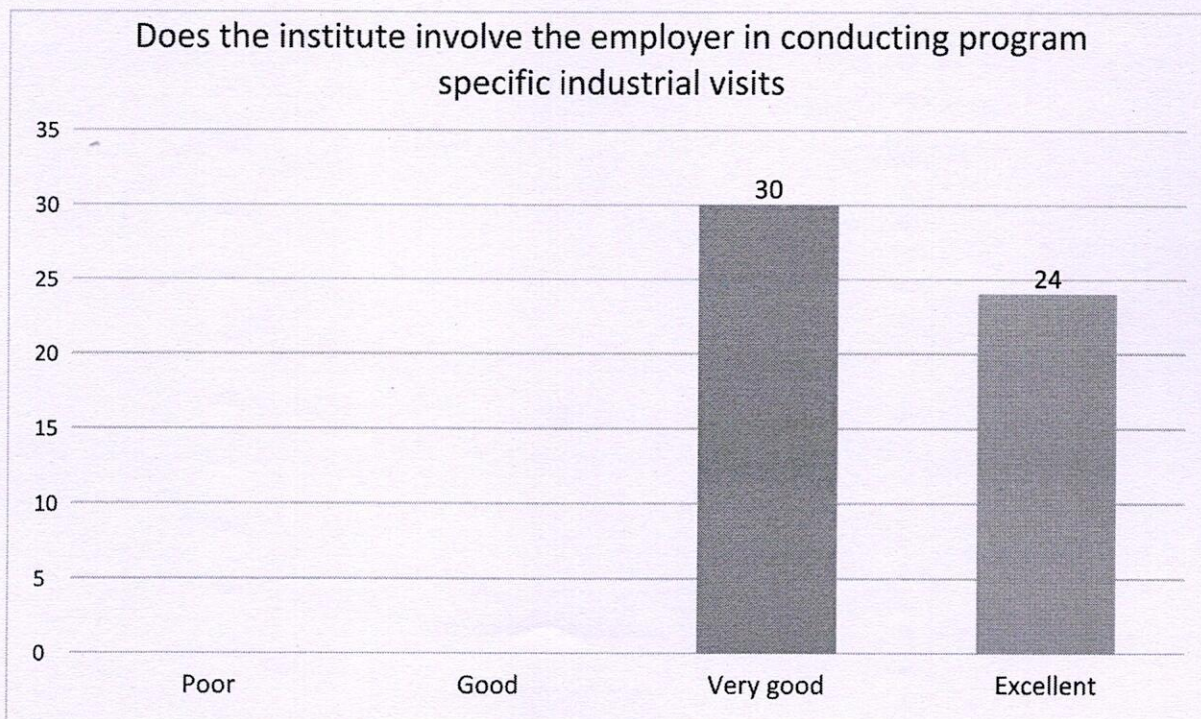
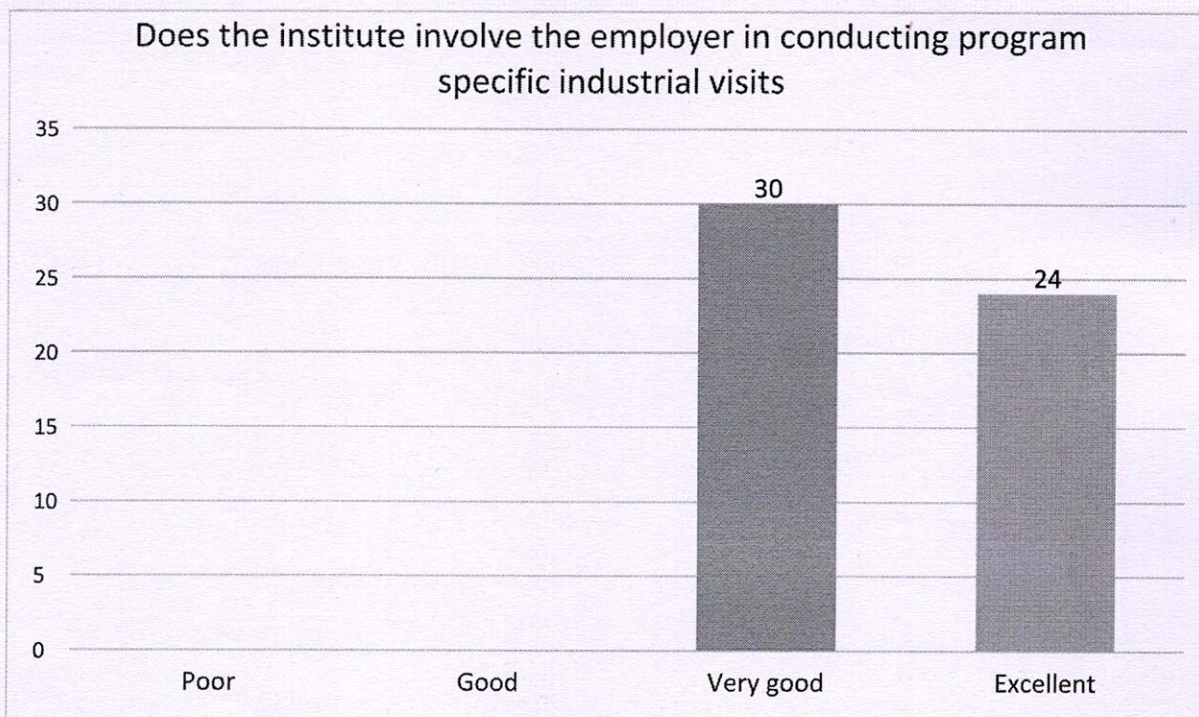


*3.59m*  
Prof. T. THIRUNAVUKKARASU, M.D., D.A.,  
Dean  
Velammal Medical College Hospital  
and Research Institute  
"Velammal Village"  
Madurai-Tuticorin Road  
Anuppanadi, Madurai-625 009, T.N.





# VELAMMAL MEDICAL COLLEGE HOSPITAL AND RESEARCH INSTITUTE MADURAI - 625009



*y. s. am*  
Prof. T. THIRUNAVUKKARASU, M.D., D.A.,  
Dean  
Velammal Medical College Hospital  
and Research Institute  
"Velammal Village"  
Madurai-Tuticorin  
Anuppanadi, Madurai-625 009, T.M.

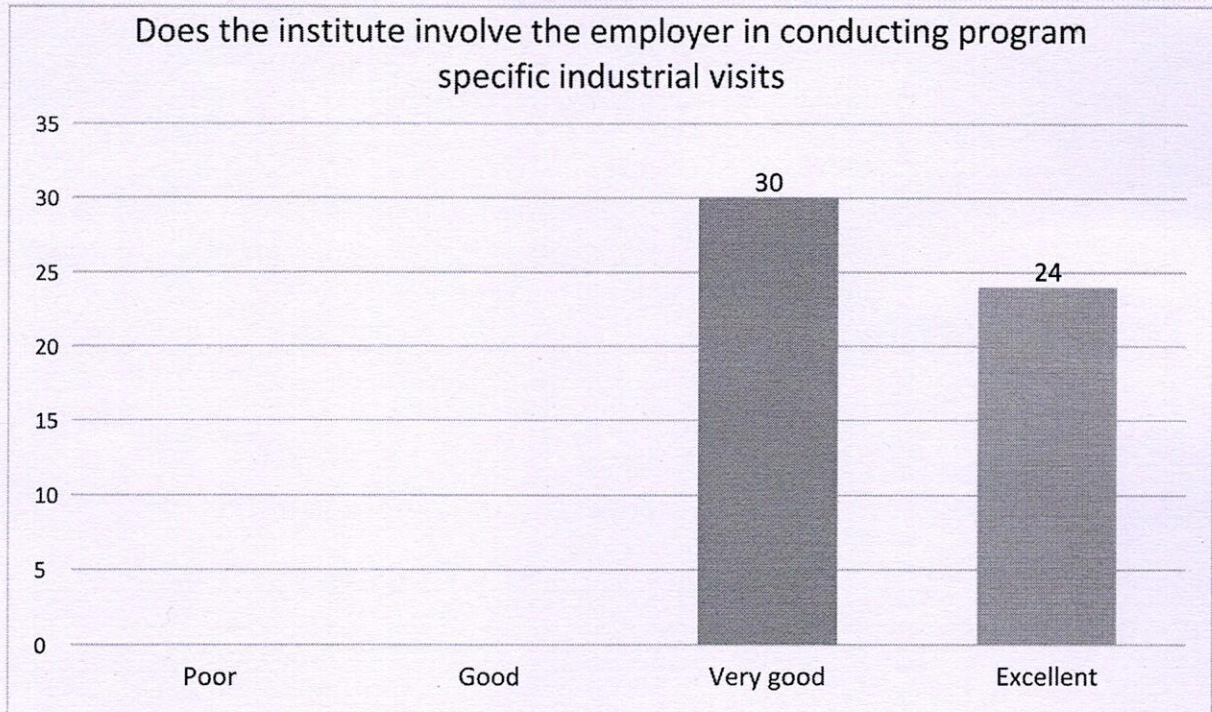




# VELAMMAL MEDICAL COLLEGE

## HOSPITAL AND RESEARCH INSTITUTE

MADURAI - 625009

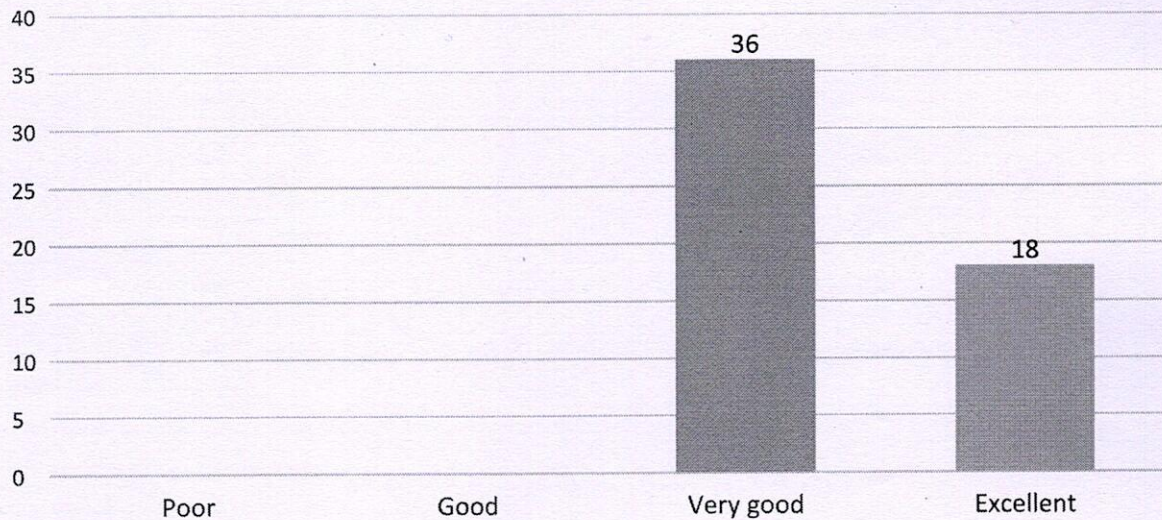




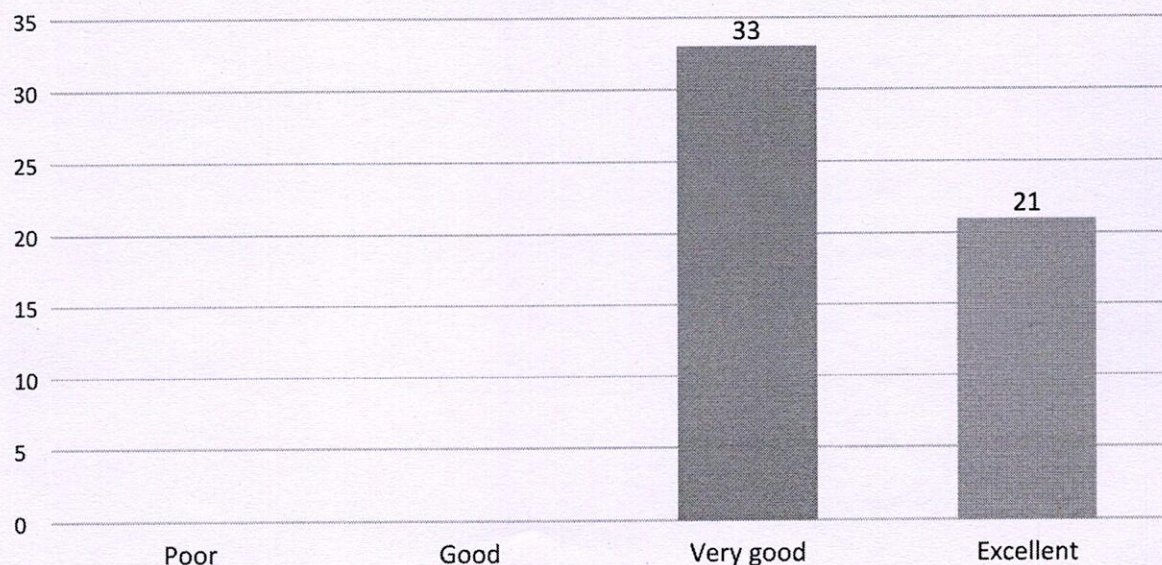


# VELAMMAL MEDICAL COLLEGE HOSPITAL AND RESEARCH INSTITUTE MADURAI - 625009

Does the institute seek and incorporate the employer inputs on latest industry requirements in designing add-on/certificate programs



Does this institute provide for employer to mentor for student projects



*33/00*  
Prof. T. THIRUNAVUKKARASU, M.D., P.A.,  
Dean

Velammal Medical College Hospital  
and Research Institute

"Velammal Village"  
Madurai-Tuticorin Road

Anupponadi, Madurai-625 009, T.N.

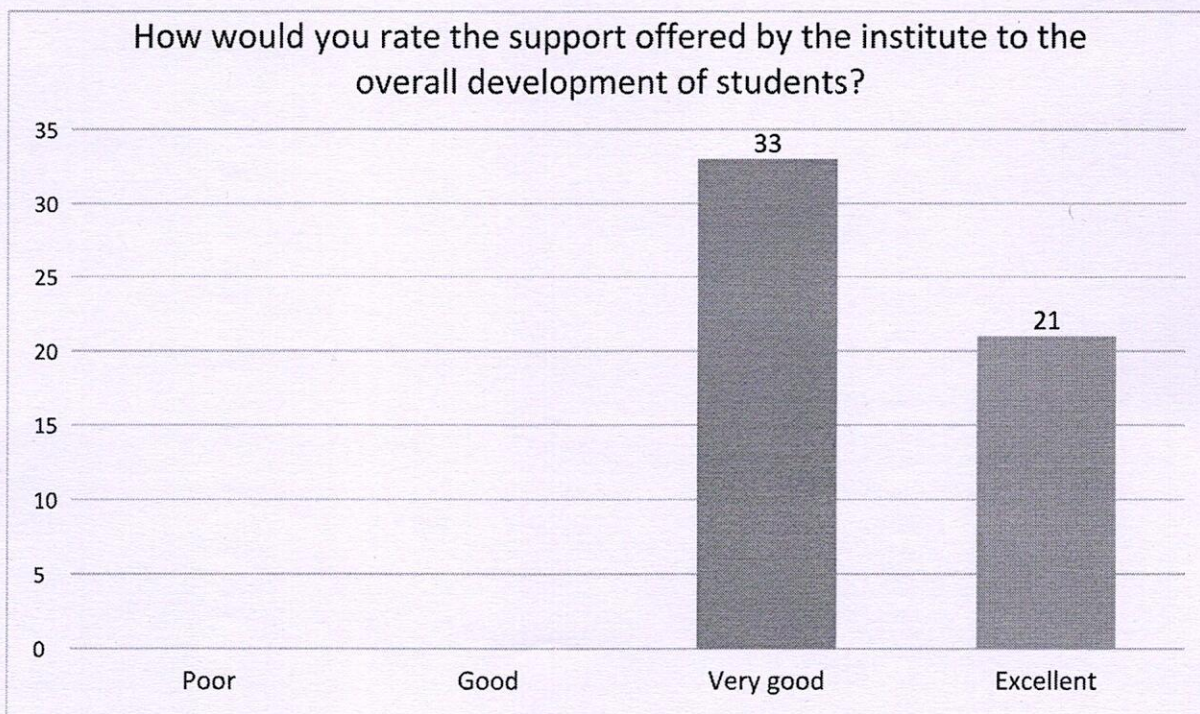




# VELAMMAL MEDICAL COLLEGE

## HOSPITAL AND RESEARCH INSTITUTE

MADURAI - 625009



*Prof. T. THIRUNAVUKKARASU, M.D., D.A.,  
Dean*  
Velammal Medical College Hospital  
and Research Institute  
"Velammal Village"  
Madurai-Tuticorin Road  
Anuppanadi, Madurai-625 009, T.N.





# VELAMMAL MEDICAL COLLEGE

## HOSPITAL AND RESEARCH INSTITUTE

### MADURAI - 625009

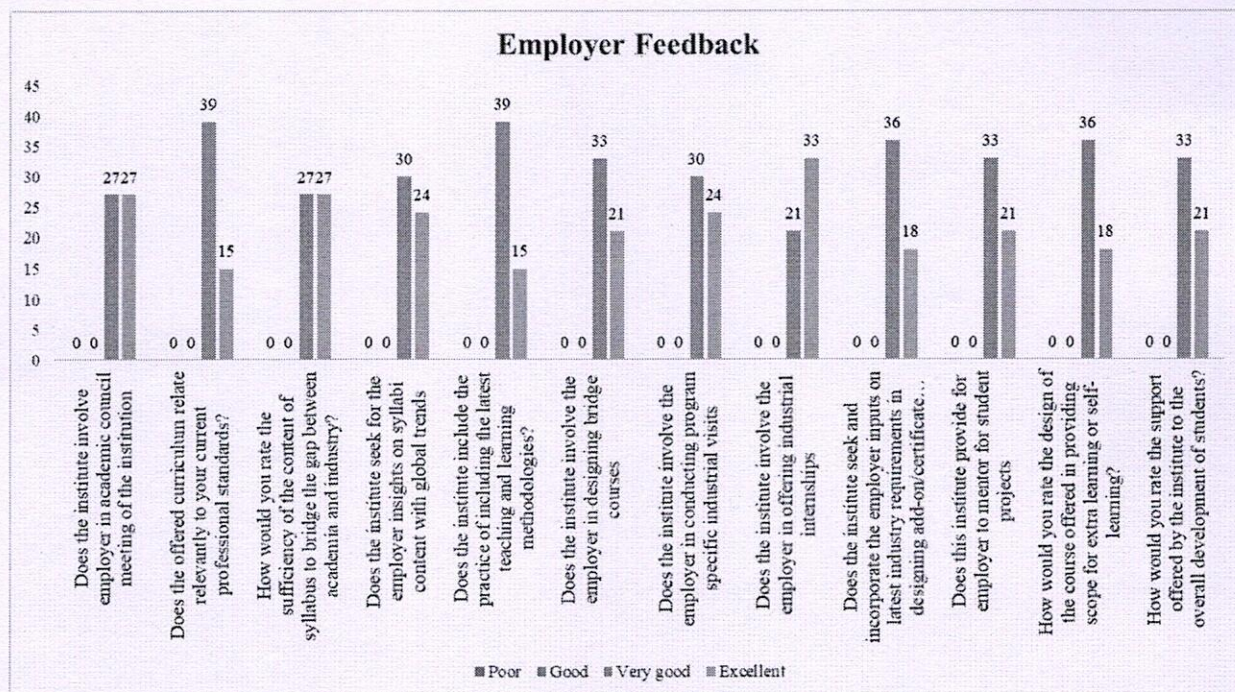
Out of around 54 responses collected from employers, the committee analysed the results and following are the findings.

S.No	Questions	Poor	Good	Very good	Excellent
1	Does the institute involve employer in academic council meeting of the institution	0.0%	0.0%	50.0%	50.0%
2	Does the offered curriculum relate relevantly to your current professional standards?	0.0%	0.0%	72.2%	27.8%
3	How would you rate the sufficiency of the content of syllabus to bridge the gap between academia and industry?	0.0%	0.0%	50.0%	50.0%
4	Does the institute seek for the employer insights on syllabi content with global trends	0.0%	0.0%	55.6%	44.4%
5	Does the institute include the practice of including the latest teaching and learning methodologies?	0.0%	0.0%	72.2%	27.8%
6	Does the institute involve the employer in designing bridge courses	0.0%	0.0%	61.1%	38.9%
7	Does the institute involve the employer in conducting program specific industrial visits	0.0%	0.0%	55.6%	44.4%
8	Does the institute involve the employer in offering industrial internships	0.0%	0.0%	38.9%	61.1%
9	Does the institute seek and incorporate the employer inputs on latest industry requirements in designing add-on/certificate programs	0.0%	0.0%	66.7%	33.3%
10	Does this institute provide for employer to mentor for student projects	0.0%	0.0%	61.1%	38.9%
11	How would you rate the design of the course offered in providing scope for extra learning or self-learning?	0.0%	0.0%	66.7%	33.3%
12	How would you rate the support offered by the institute to the overall development of students?	0.0%	0.0%	61.1%	38.9%





# VELAMMAL MEDICAL COLLEGE HOSPITAL AND RESEARCH INSTITUTE MADURAI - 625009

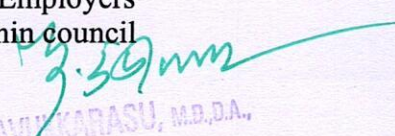


**Based on employer feedback, a high percentage of responses (over 85%) rated the following aspects as "Very Good" and "Excellent":**

1. Employer involvement in academic council meetings.
2. Curriculum relevance to current professional standards.
3. Syllabus content sufficiency to bridge academia-industry gaps.
4. Seeking employer insights on syllabi content aligned with global trends.
5. Inclusion of latest teaching and learning methodologies.
6. Employer involvement in designing bridge courses.
7. Employer support in conducting program-specific industrial visits.
8. Employer involvement in offering industrial internships.
9. Incorporating employer inputs on industry needs in designing add-on/certificate programs.
10. Employer mentorship in student projects.
11. Course design providing scope for extra or self-directed learning.
12. Institutional support for the overall development of students.

## **Recommendations for Improvement:**

1. **Enhanced Employer Involvement in Curriculum Development:** Employers suggested a deeper role in curriculum development, particularly within council meetings, to better align academic content with industry standards.

  
 Prof. T. THIRUNAVUKARASU, M.B.D.A.,  
 Dean  
 Velammal Medical College Hospital  
 and Research Institute  
 "Velammal Village"  
 Madurai-Tuticorin Ring Road  
 Anupattadi, Madurai-625 009, T.N.





# **VELAMMAL MEDICAL COLLEGE**

## **HOSPITAL AND RESEARCH INSTITUTE**

**MADURAI - 625009**

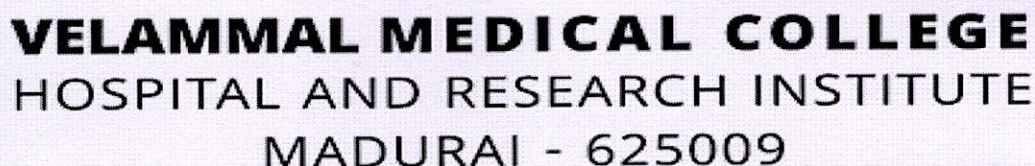
2. **Expanded Collaboration on Bridge Courses and Internships:** Employers recommended additional involvement in designing bridge courses and structured internship programs.
3. **Increased Student Mentorship Opportunities:** There is a need to further develop employer-student mentorship initiatives to support student skill development and industry readiness.

### **Suggestions:**

1. Increase employer participation in curriculum discussions to better reflect evolving industry needs.
2. Expand collaboration on bridge courses and internships for enhanced practical exposure.
3. Strengthen employer mentorship programs to support student skill acquisition and prepare them for industry challenges.

*cy. 29ms*  
Prof. T. THIRUNAVUKKARASU, M.D., D.A.,  
Dean  
Velammal Medical College Hospital  
and Research Institute  
"Velammal" 43 | Page  
Madurai-Tuticorin Ring Road  
Anuppanadi, Madurai-625 009, T.N.

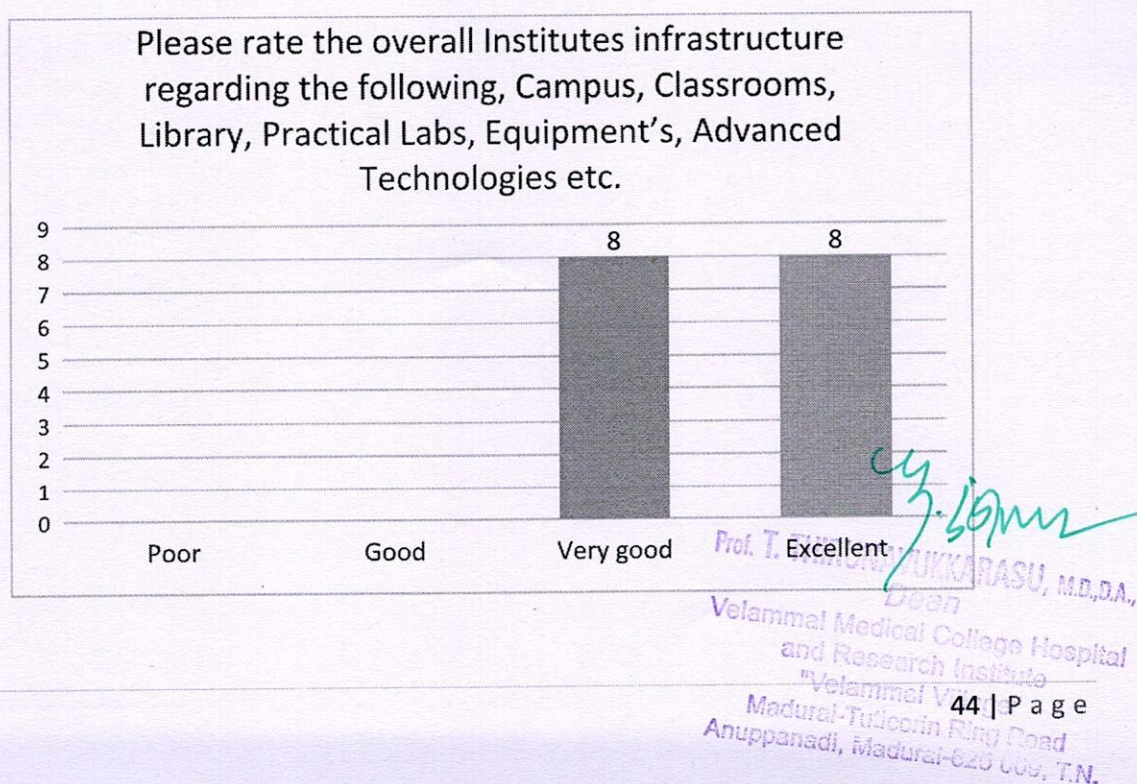




Professionals Questionnaire contains following questions

1. Please rate the overall Institutes infrastructure regarding the following Campus, Classrooms, Library, Practical Labs, Equipment's, Advanced Technologies etc.
2. How would you rate the hospitality rendered by this institute during your stay (Accommodation, Canteen/Food quality, Transport, etc.)
3. Are the examinations being conducted with fairness?  
(Applicable for External Examiners only)
4. Do you feel the quality of clinical material is adequate for the examinations?  
(Applicable for External Examiners only)
5. Please rate the quality of Technical/Paramedical/Nursing/Support staff?
6. Please rate your experience with stage management during lecture? (Applicable for Guest lecturers only)
7. What is experience about the quality & behaviours of student?
8. How would you rate the suitability of the syllabus to the course?
9. Please rate the objectives of the syllabus being well defined and clear?
10. Please rate the adequacy of syllabus in bridging the gap between theory and practical
11. How do you rate the adequacy of the Curriculum in providing practical/clinical skills to the students?
12. Please rate the relevancy of the current assessment methods to syllabus?

The feedback committee has collected responses 16 professionals and analysed the result. Following are the findings of the committee.

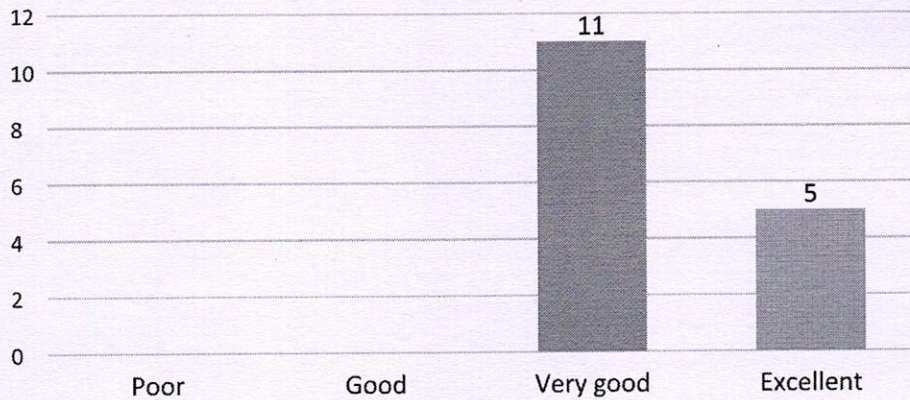




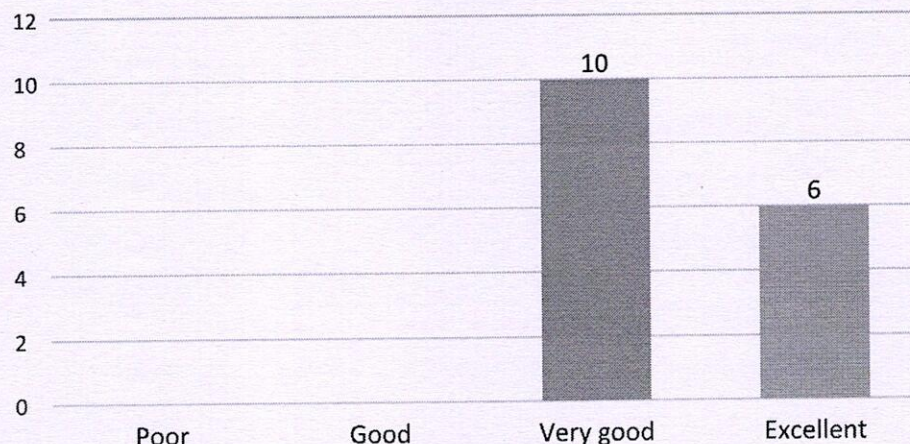


# VELAMMAL MEDICAL COLLEGE HOSPITAL AND RESEARCH INSTITUTE MADURAI - 625009

How would you rate the hospitality rendered by this institute during your stay (Accommodation, Canteen/Food quality, Transport, etc.)



Are the examinations being conducted with fairness.

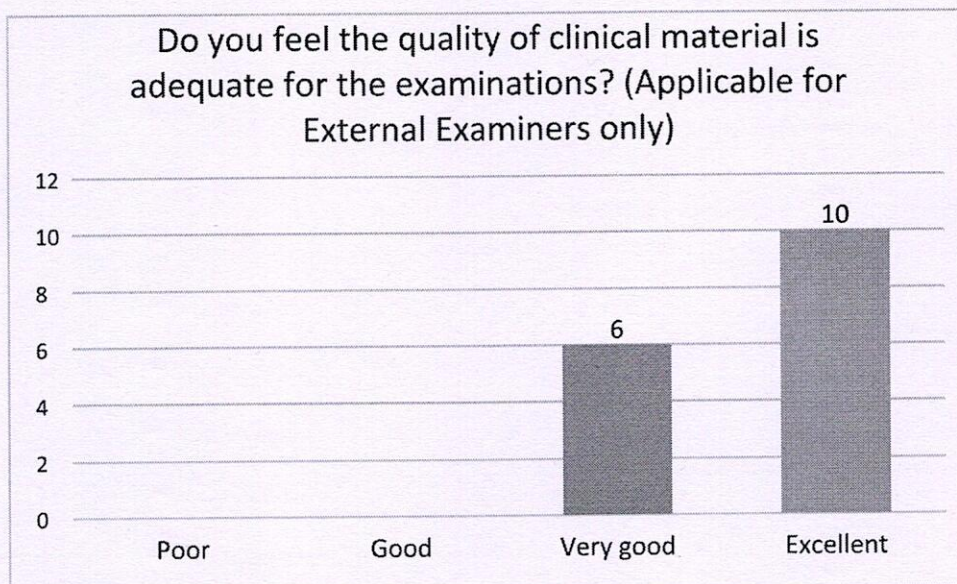
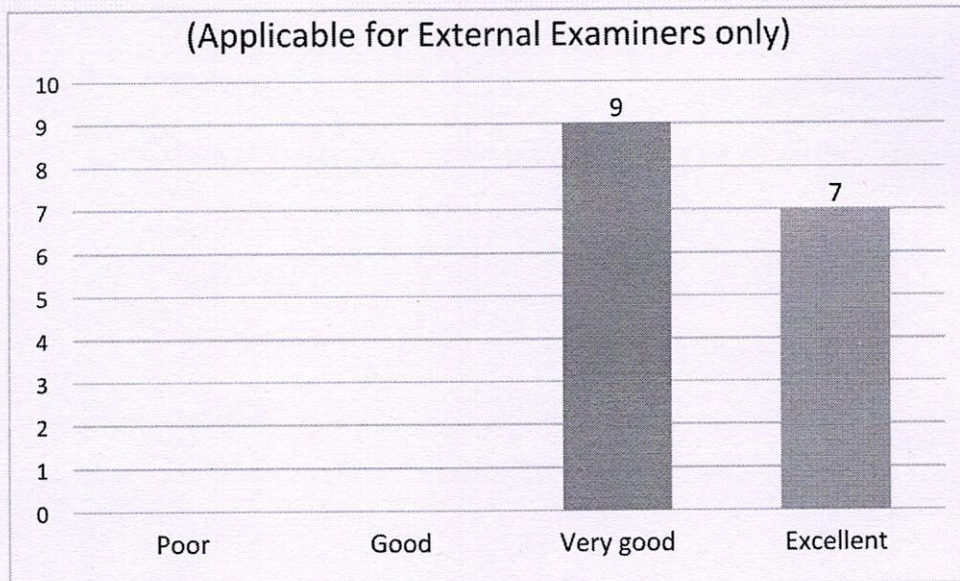


*Cy. J. Gurus*  
Prof. T. THIRUNAVUKKARASU, M.D., D.A.,  
Dean  
Velammal Medical College Hospital  
and Research Institute  
"Velammal Village"  
Madurai-Tutic 45 | Page  
Anuppanadi, Madurai-625 009, T.N.





# VELAMMAL MEDICAL COLLEGE HOSPITAL AND RESEARCH INSTITUTE MADURAI - 625009

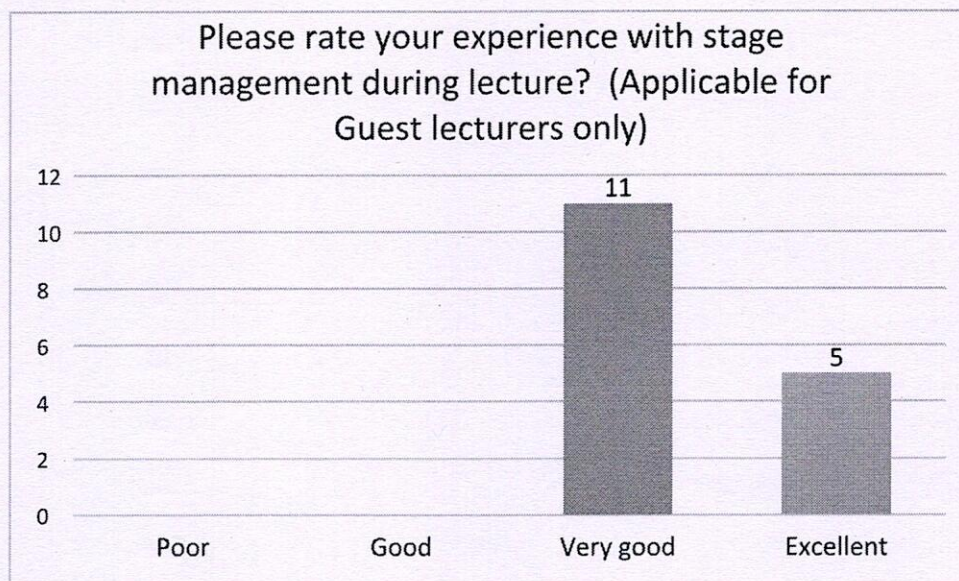
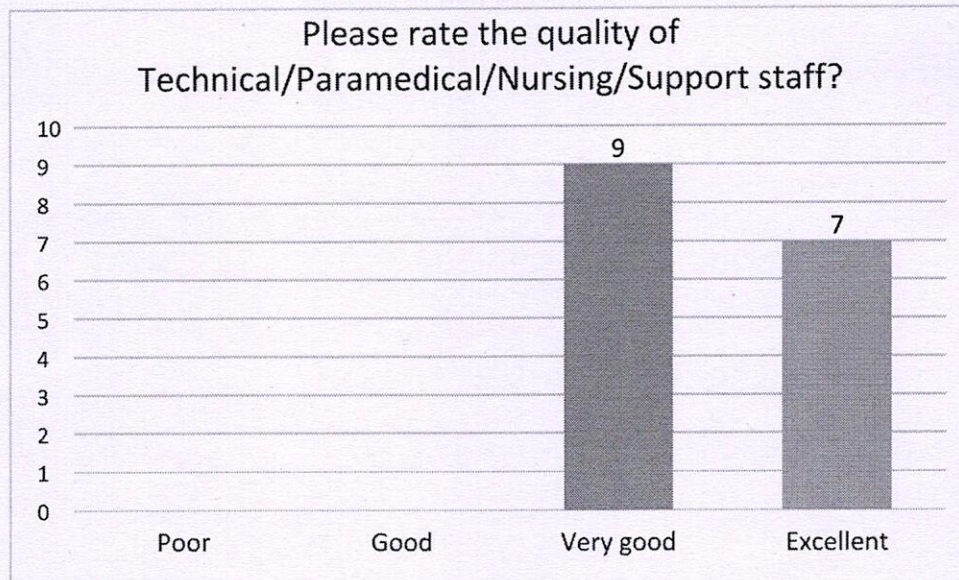


*Prof. T. THIRUNAVUKKARASU*  
Prof. T. THIRUNAVUKKARASU, M.D., P.A.,  
Dean  
Velammal Medical College Hospital  
and Research Institute  
"Velammal Village"  
Madurai-Tuticorin Road  
Anuppanadi, Madurai-625 009, T.N.





# VELAMMAL MEDICAL COLLEGE HOSPITAL AND RESEARCH INSTITUTE MADURAI - 625009



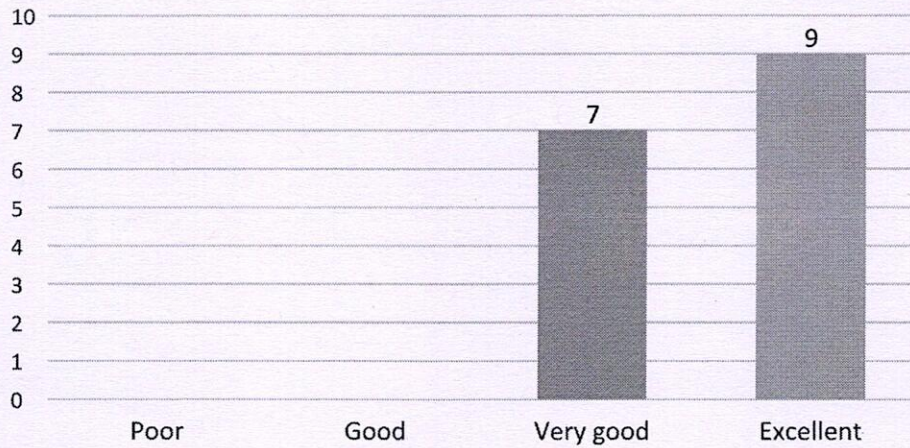
*Cy. S. S. S. S. S.*  
Prof. T. THIRUNAVUKKARASU, M.D., D.A.,  
Dean  
Velammal Medical College Hospital  
and Research Institute  
"Velammal Vilasam"  
Madurai-Tuticorin Road,  
Anuppanadi, Madurai-625 009, T.N.



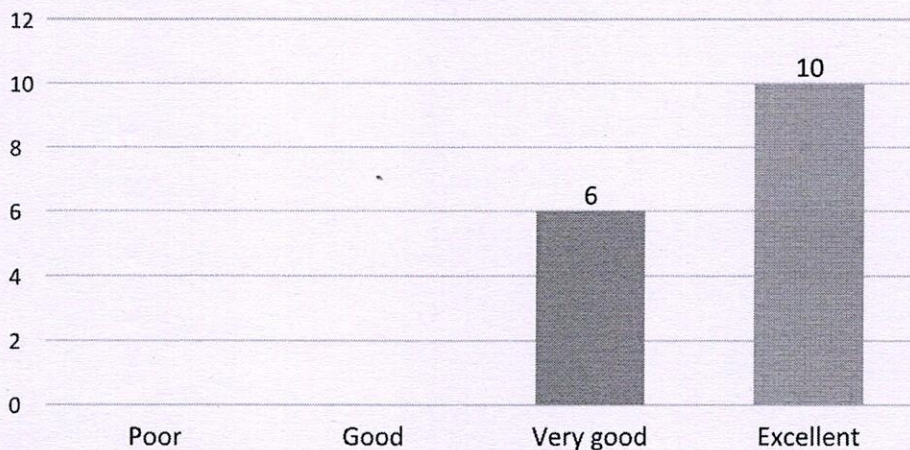


# VELAMMAL MEDICAL COLLEGE HOSPITAL AND RESEARCH INSTITUTE MADURAI - 625009

What is experience about the quality & behaviors  
of student?



How would you rate the suitability of the syllabus  
to the course?

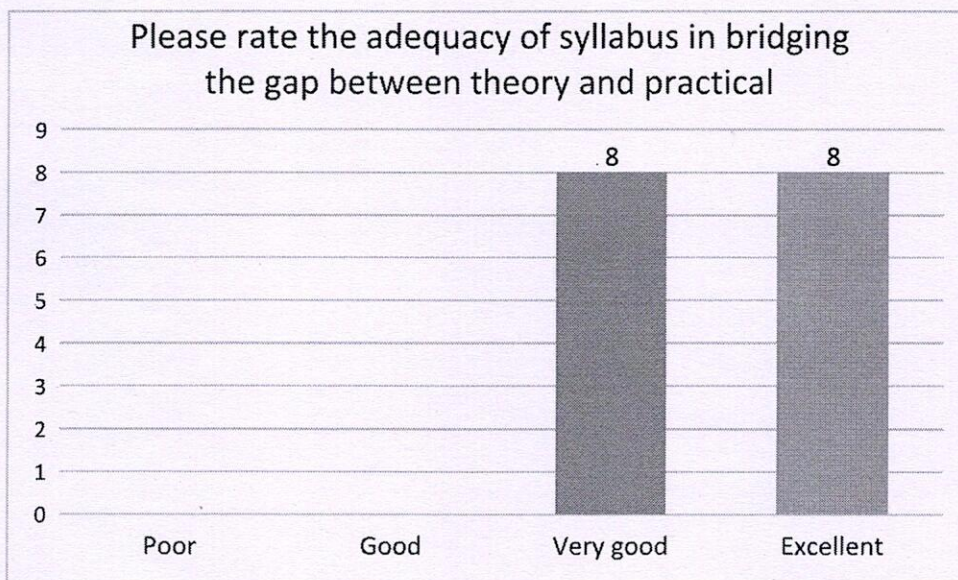
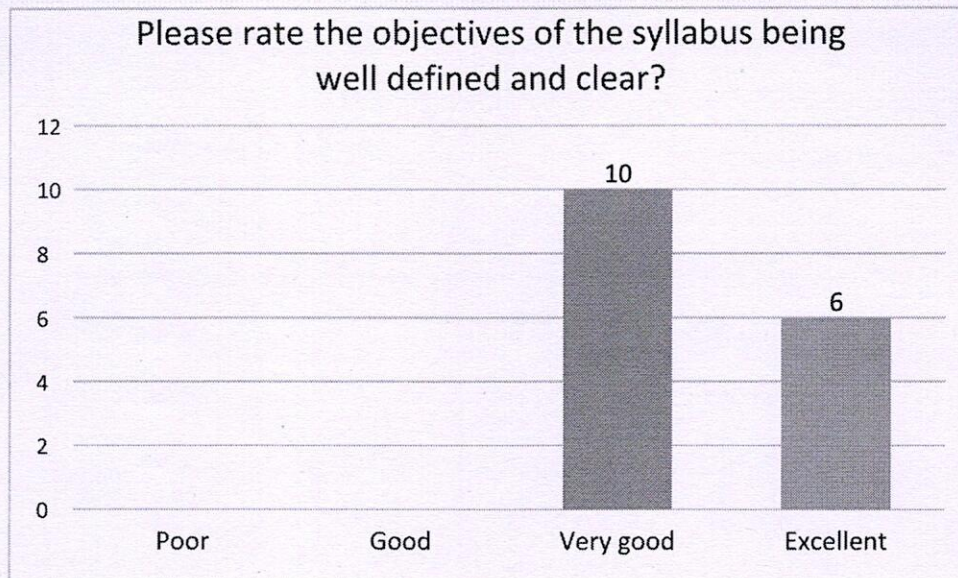


*cy.3.3.9mrs*  
Prof. T. THIRUNAVUKKARASU, M.D., D.A.,  
Dean  
Velammal Medical College Hospital  
and Research Institute  
"Velammal Village"  
Madurai-Tuticorin Ring Road  
Anuppanadi, Madurai-625 009, T.N.





# VELAMMAL MEDICAL COLLEGE HOSPITAL AND RESEARCH INSTITUTE MADURAI - 625009



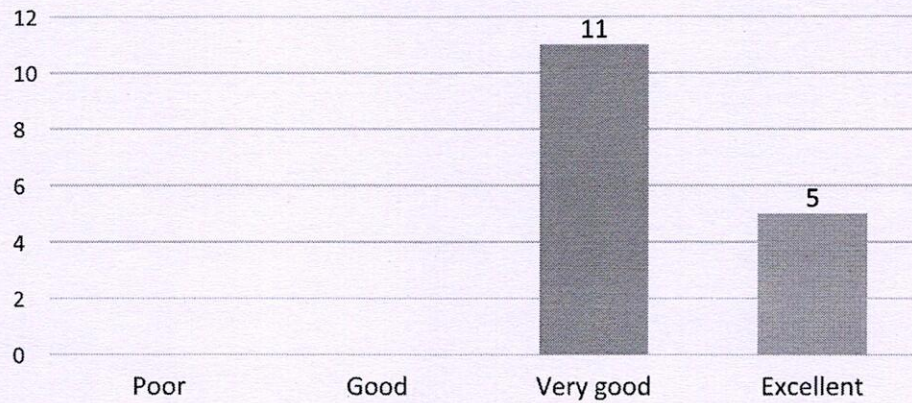
*cy.30m*  
Prof. T. THIRUNAVUKKARASU, M.D., D.A.,  
Dean  
Velammal Medical College Hospital  
and Research Institute  
"Velammal Vilagee"  
Madurai-Tulicorin Road  
Anuppanadi, Madurai-625 009, T.N.



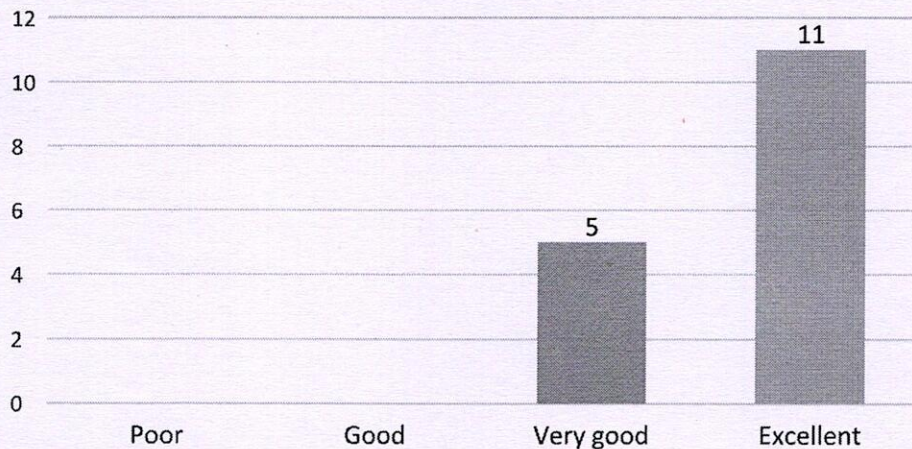


# VELAMMAL MEDICAL COLLEGE HOSPITAL AND RESEARCH INSTITUTE MADURAI - 625009

How do you rate the adequacy of the Curriculum  
in providing practical/clinical skills to the  
students?



Please rate the relevancy of the current  
assessment methods to syllabus?

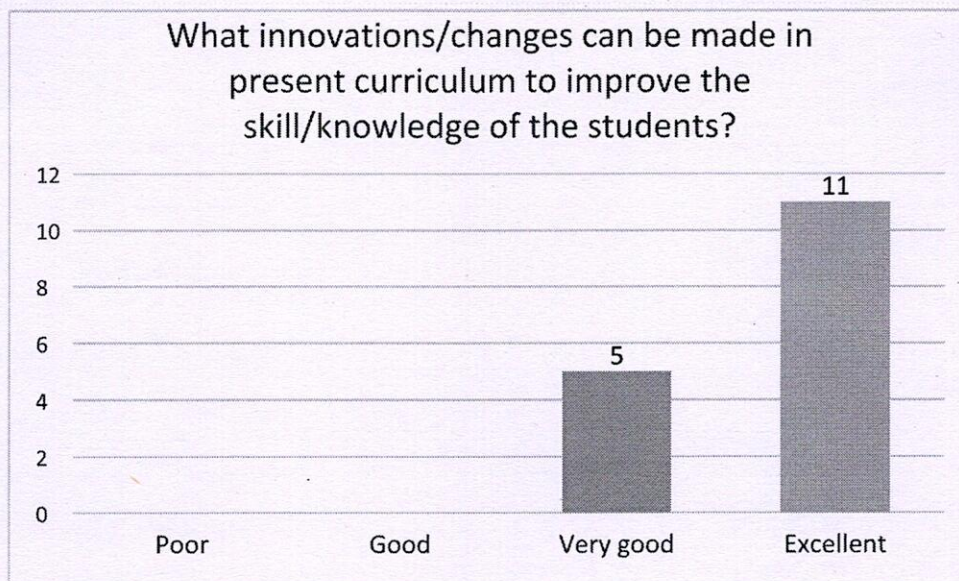


*Prof. T. THIRUNAVUKKARASU, M.D., D.A.,  
Dean  
Velammal Medical College Hospital  
and Research Institute  
"Velammal Villages"  
Madurai-Tuticorin Road  
Anupparadi, Madurai-625 009, T.N.*





**VELAMMAL MEDICAL COLLEGE**  
**HOSPITAL AND RESEARCH INSTITUTE**  
**MADURAI - 625009**



*T. Thirunavukarasu*  
Prof. T. THIRUNAVUKARASU, M.D., D.A.,  
Dean  
Velammal Medical College Hospital  
and Research Institute  
"Velammal Village"  
Madurai-Tuticottin Highway  
Anuppanadi, Madurai-625 000, T.N.





# VELAMMAL MEDICAL COLLEGE

## HOSPITAL AND RESEARCH INSTITUTE

### MADURAI - 625009

Out of around 18 responses collected from professionals, the committee analysed the results and following are the findings.

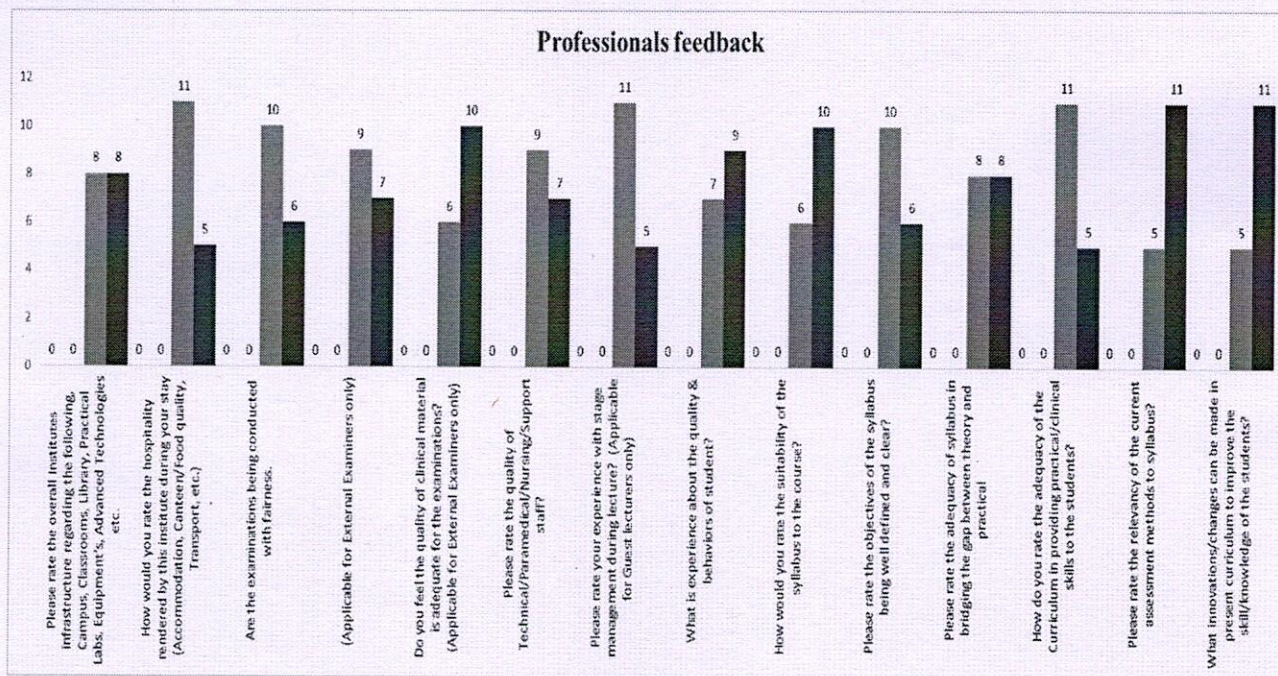
S.No	Questions	Poor	Good	Very good	Excellent
1	Please rate the overall Institutes infrastructure regarding the following, Campus, Classrooms, Library, Practical Labs, Equipment's, Advanced Technologies etc.	0.0%	0.0%	50.0%	50.0%
2	How would you rate the hospitality rendered by this institute during your stay (Accommodation, Canteen/Food quality, Transport, etc.)	0.0%	0.0%	68.8%	31.3%
3	Are the examinations being conducted with fairness?	0.0%	0.0%	62.5%	37.5%
4	(Applicable for External Examiners only)	0.0%	0.0%	56.3%	43.8%
5	Do you feel the quality of clinical material is adequate for the examinations? (Applicable for External Examiners only)	0.0%	0.0%	37.5%	62.5%
6	Please rate the quality of Technical/Paramedical/Nursing/Support staff?	0.0%	0.0%	56.3%	43.8%
7	Please rate your experience with stage management during lecture? (Applicable for Guest lecturers only)	0.0%	0.0%	68.8%	31.3%
8	What is experience about the quality & behaviours of student?	0.0%	0.0%	43.8%	56.3%
9	How would you rate the suitability of the syllabus to the course?	0.0%	0.0%	37.5%	62.5%
10	Please rate the objectives of the syllabus being well defined and clear?	0.0%	0.0%	62.5%	37.5%
11	Please rate the adequacy of syllabus in bridging the gap between theory and practical	0.0%	0.0%	50.0%	50.0%
12	How do you rate the adequacy of the Curriculum in providing practical/clinical skills to the students?	0.0%	0.0%	68.8%	31.3%
13	Please rate the relevancy of the current assessment methods to syllabus?	0.0%	0.0%	31.3%	68.8%
14	What innovations/changes can be made in present curriculum to improve the skill/knowledge of the students?	0.0%	0.0%	31.3%	68.8%

Prof. T. THIRUKAVUKARASU, M.D., D.A.,  
Dean  
Velammal Medical College Hospital  
and Research Institute  
"Velammal Village"  
Madurai-Tuticorin Ring Road  
Anuppanadi, Madurai-625 009, T.M.





# VELAMMAL MEDICAL COLLEGE HOSPITAL AND RESEARCH INSTITUTE MADURAI - 625009



**Based on professional feedback, a high percentage of responses (over 85%) rated the following aspects as "Very Good" and "Excellent":**

1. Institute infrastructure, including campus facilities, classrooms, library, labs, and advanced technologies.
2. Hospitality provided by the institute, such as accommodation, food quality, and transport.
3. Fairness in examination conduct.
4. Adequate clinical material for examinations (for external examiners).
5. Quality of technical, paramedical, nursing, and support staff.
6. Stage management experience during lectures (for guest lecturers).
7. Quality and behavior of students.
8. Syllabus suitability to the course.
9. Clarity and definition of syllabus objectives.
10. Syllabus adequacy in bridging the gap between theory and practice.
11. Curriculum's provision for practical and clinical skills development.
12. Relevance of current assessment methods to the syllabus.
13. Opportunities for innovation and improvement in the curriculum to enhance student skills and knowledge.

**However, the committee recommended improvements in the following areas:**

1. **Curriculum Innovation:** Professionals suggested integrating more innovative and updated curriculum components to better align with practical demands.
2. **Enhanced Practical Exposure:** Strengthen practical skill training across courses, especially for clinical and technical fields.

Prof. T. THIRUPATHI, M.D., D.A.,  
 Dean  
 Velammal Medical College Hospital  
 and Research Institute  
 "Velammal Medical College"  
 Madurai-Tuticorin Road  
 Anuppanadi, Madurai-625 009, T.N.





**VELAMMAL MEDICAL COLLEGE**  
**HOSPITAL AND RESEARCH INSTITUTE**  
**MADURAI - 625009**

**Suggestions:**

1. Introduce more advanced technologies and resources to further support practical learning and skill acquisition.
2. Regularly review and update curriculum to align with evolving industry needs.
3. Enhance student exposure to hands-on experiences through clinical, technical, and paramedical training.

**The committee decided to submit the recommendations to Governing council through IQAC to take necessary action on the recommendations.**